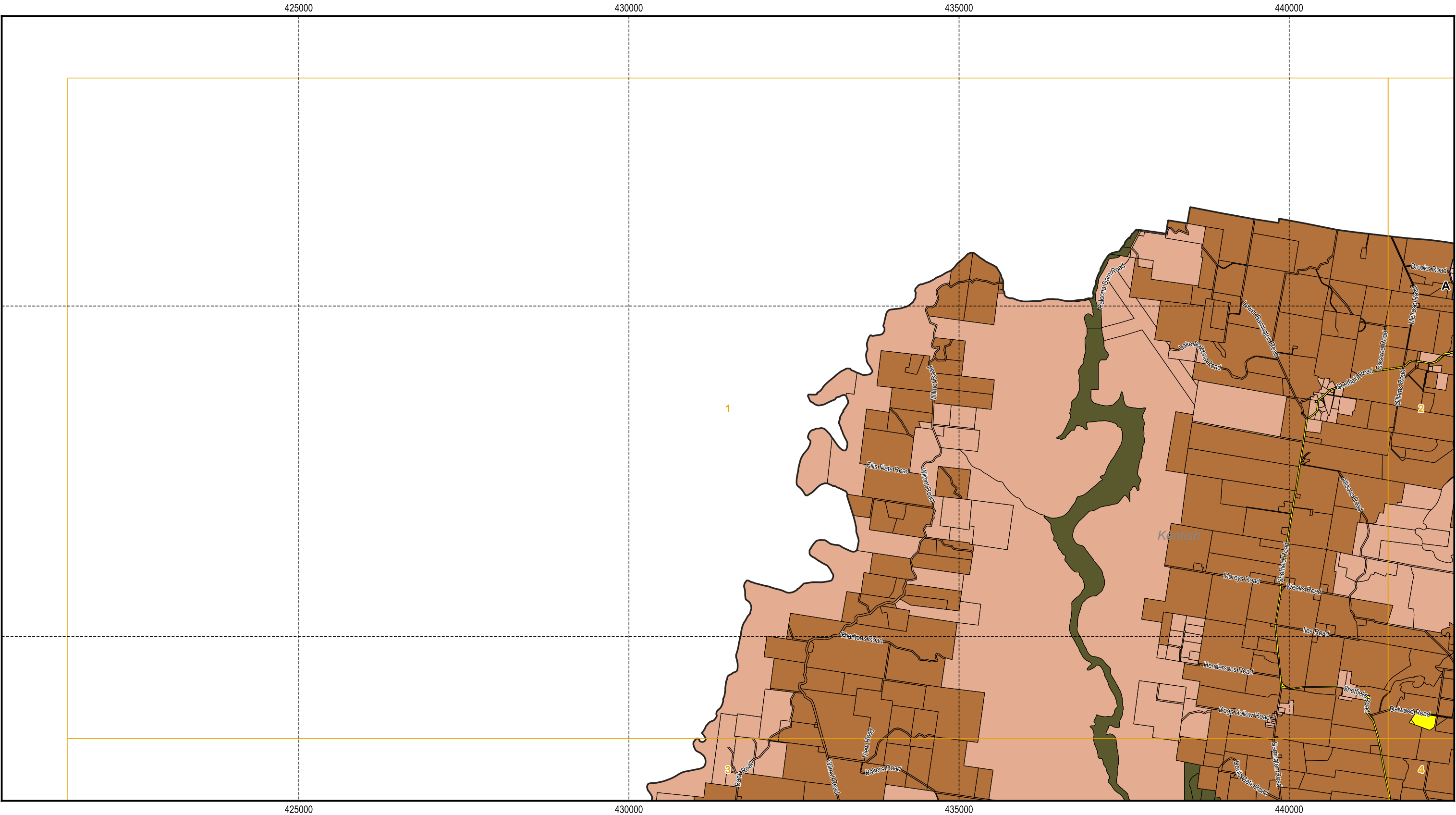


Tasmanian Planning Scheme - Zones: Kentish Local Provisions Schedule



Legend

General Residential	Commercial	Utilities
Inner Residential	Light Industrial	Community Purpose
Low Density Residential	General Industrial	Recreation
Rural Living	Rural	Open Space
Village	Agriculture	Future Urban
Urban Mixed Use	Landscape Conservation	Particular Purpose
Local Business	Environmental Management	Zone Boundaries
General Business	Major Tourism	Cadastral parcels
Central Business	Port and Marine	

Zone boundaries:

1. Between title corners

N

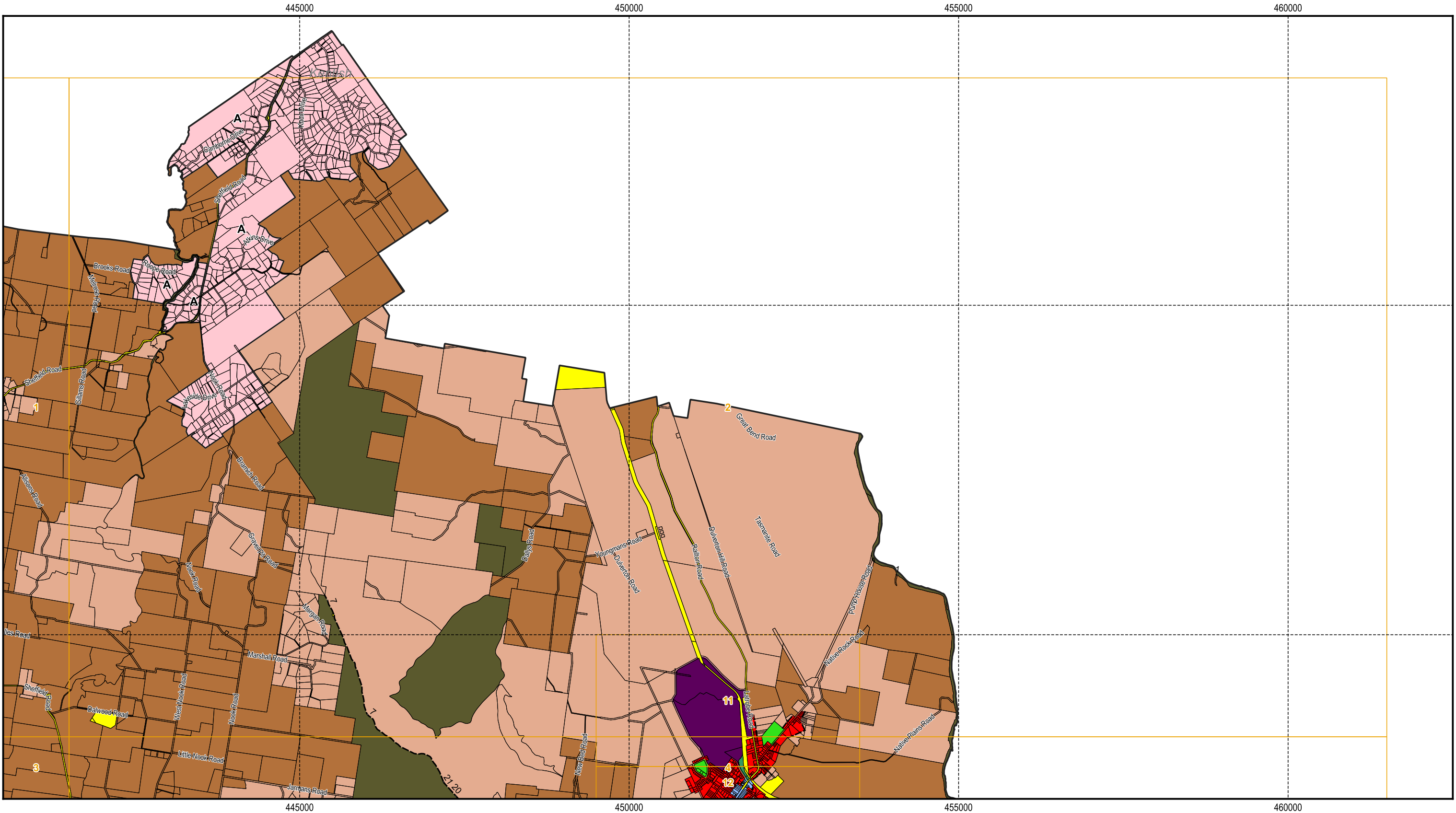
Map 1 of 14

500 1,000 1,500 2,000 2,500 m

KENTISH

Scale: 1:55,000 when printed at A3
Coordinate system: GDA94 MGA Zone 55
Planning data from Kentish Council
Base topographic data from the LIST © State of Tasmania
Print Date: 21/04/2023 Cadastre Date: 09/04/2023

Tasmanian Planning Scheme - Zones: Kentish Local Provisions Schedule



Legend

General Residential	Commercial	Utilities
Inner Residential	Light Industrial	Community Purpose
Low Density Residential	General Industrial	Recreation
Rural Living	Rural	Open Space
Village	Agriculture	Future Urban
Urban Mixed Use	Landscape Conservation	Particular Purpose
Local Business	Environmental Management	Zone Boundaries
General Business	Major Tourism	Cadastral parcels
Central Business	Port and Marine	

Zone boundaries:

- 1. Between title corners
- 3. 10m from road centreline
- 7. Ridge Line

N

Map 2 of 14

500 1,000 1,500 2,000 2,500 m

KENTISH

Scale: 1:55,000 when printed at A3

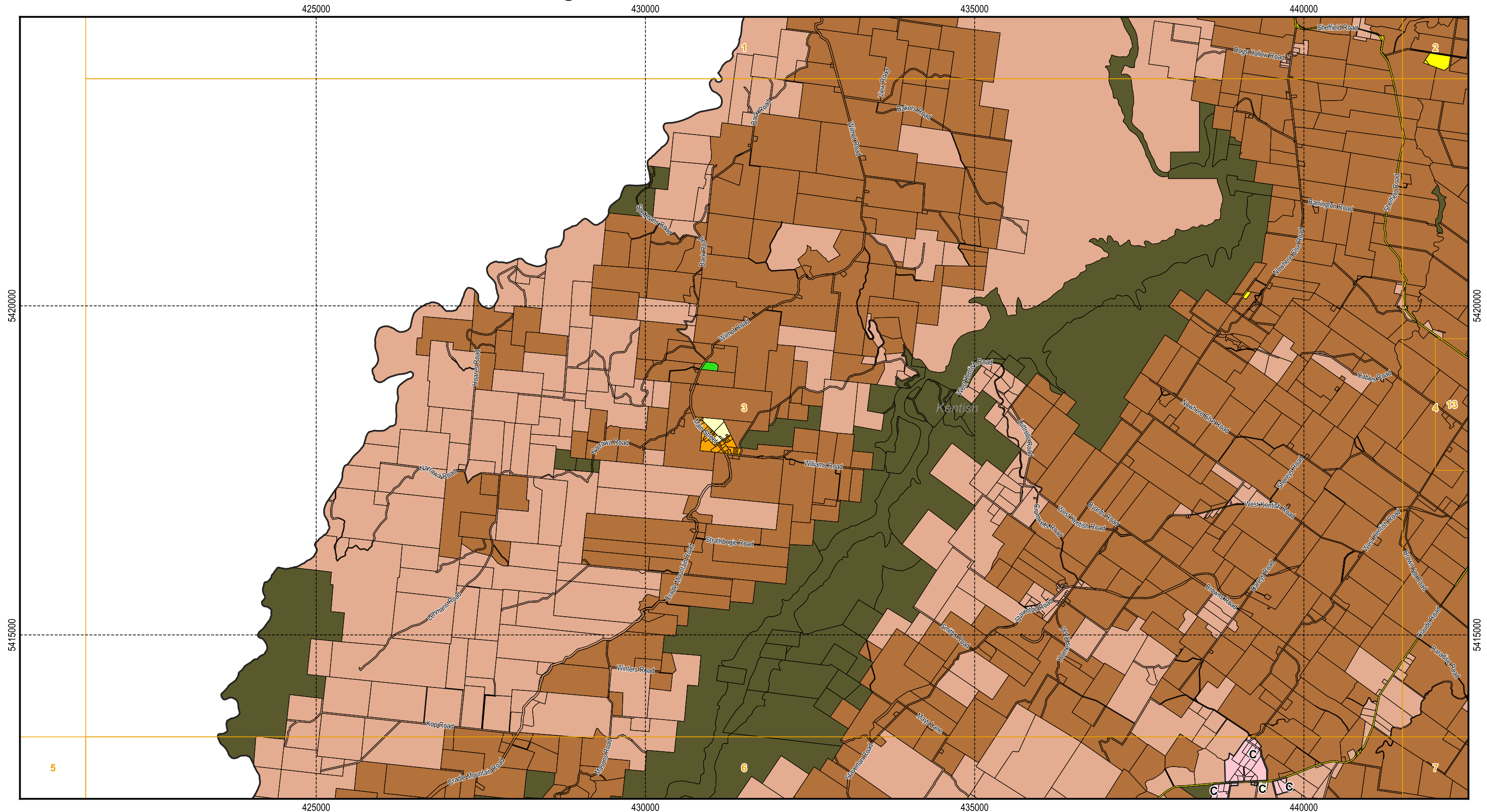
Coordinate system: GDA94 MGA Zone 55

Planning data from Kentish Council

Base topographic data from the LIST © State of Tasmania

Print Date: 21/04/2023 Cadastre Date: 09/04/2023

Tasmanian Planning Scheme - Zones: Kentish Local Provisions Schedule



Legend

 General Residential	 Commercial	 Utilities
 Inner Residential	 Light Industrial	 Community Purpose
 Low Density Residential	 General Industrial	 Recreation
 Rural Living	 Rural	 Open Space
 Village	 Agriculture	 Future Urban
 Urban Mixed Use	 Landscape Conservation	 Particular Purpose
 Local Business	 Environmental Management	 Zone Boundaries
 General Business	 Major Tourism	 Cadastral parcels
 Central Business	 Port and Marine	

Zone boundaries:

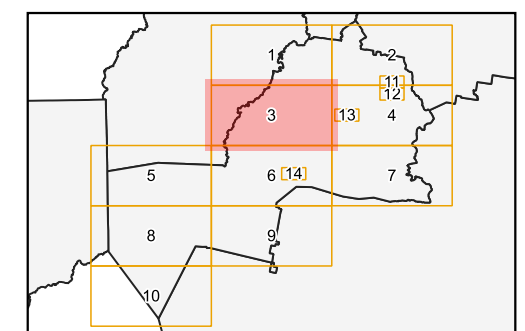
- Between title corners



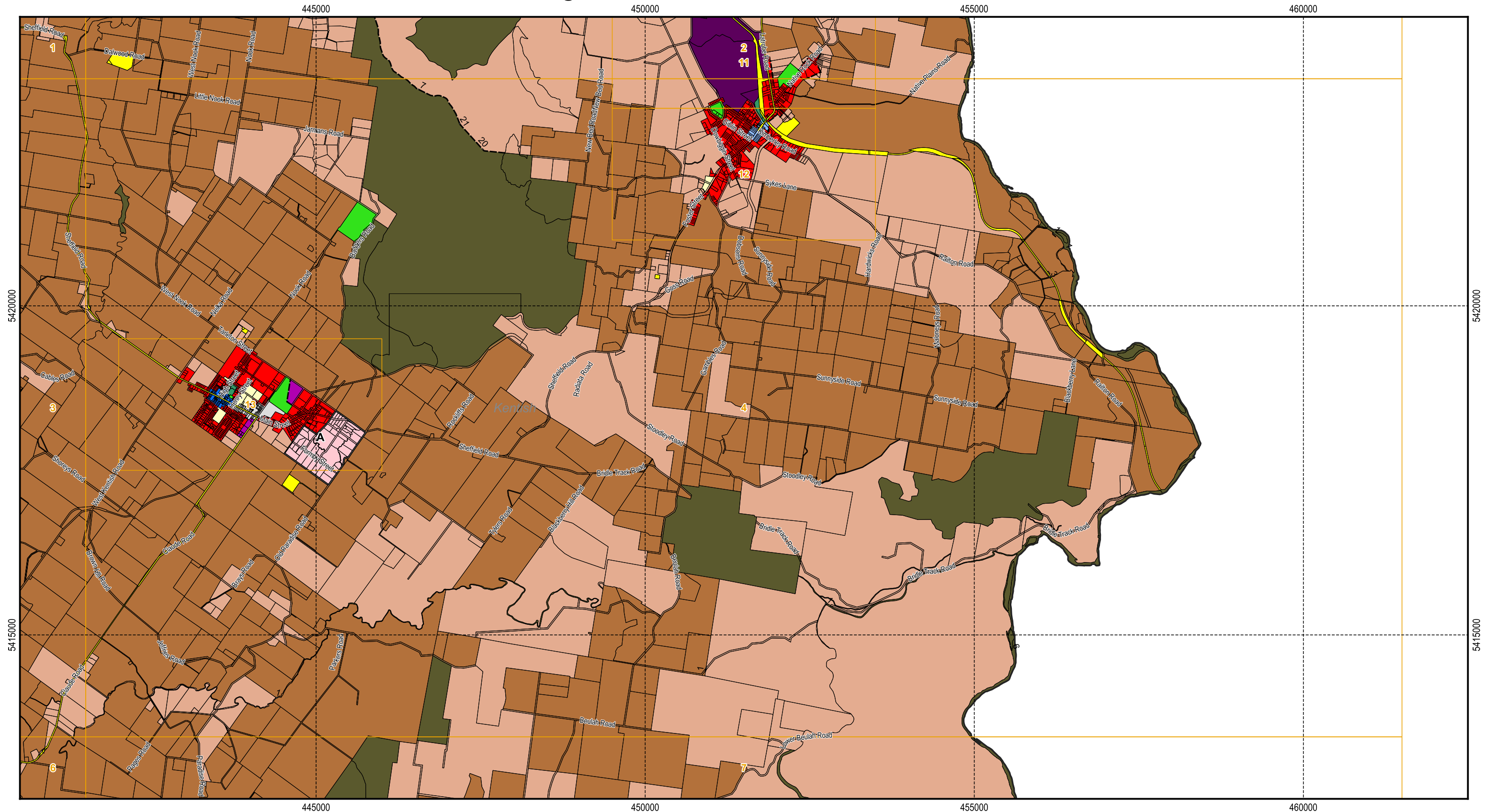
Map 3 of 14



Scale: 1:55,000 when printed at A3
Coordinate system: GDA94 MGA Zone 55
Planning data from Kentish Council
Base topographic data from the LIST © State of Tasmania
Print Date: 21/04/2023 Cadastre Date: 09/04/2023



Tasmanian Planning Scheme - Zones: Kentish Local Provisions Schedule



Legend

	General Residential		Commercial		Utilities
	Inner Residential		Light Industrial		Community Purpose
	Low Density Residential		General Industrial		Recreation
	Rural Living		Rural		Open Space
	Village		Agriculture		Future Urban
	Urban Mixed Use		Landscape Conservation		Particular Purpose
	Local Business		Environmental Management		Zone Boundaries
	General Business		Major Tourism		Cadastral parcels
	Central Business		Port and Marine		

Zone boundaries:

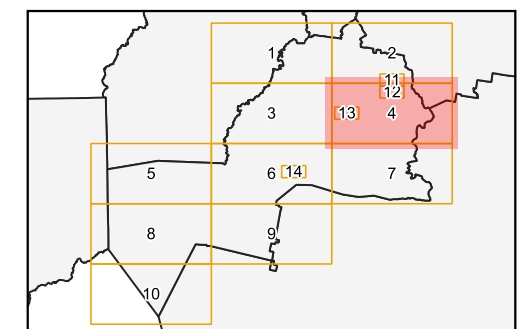
1. Between title corners
3. 10m from road centreline
6. Water Course
7. Ridge Line
20. Coordinated line (5422323.6E, 447866.9N) to (5422354.5E, 447551.8N) to (5422748E, 447194.9N) GDA94
21. Coordinated line (5422748E, 447194.9N) to (5422767.1E, 447182.7N) GDA94



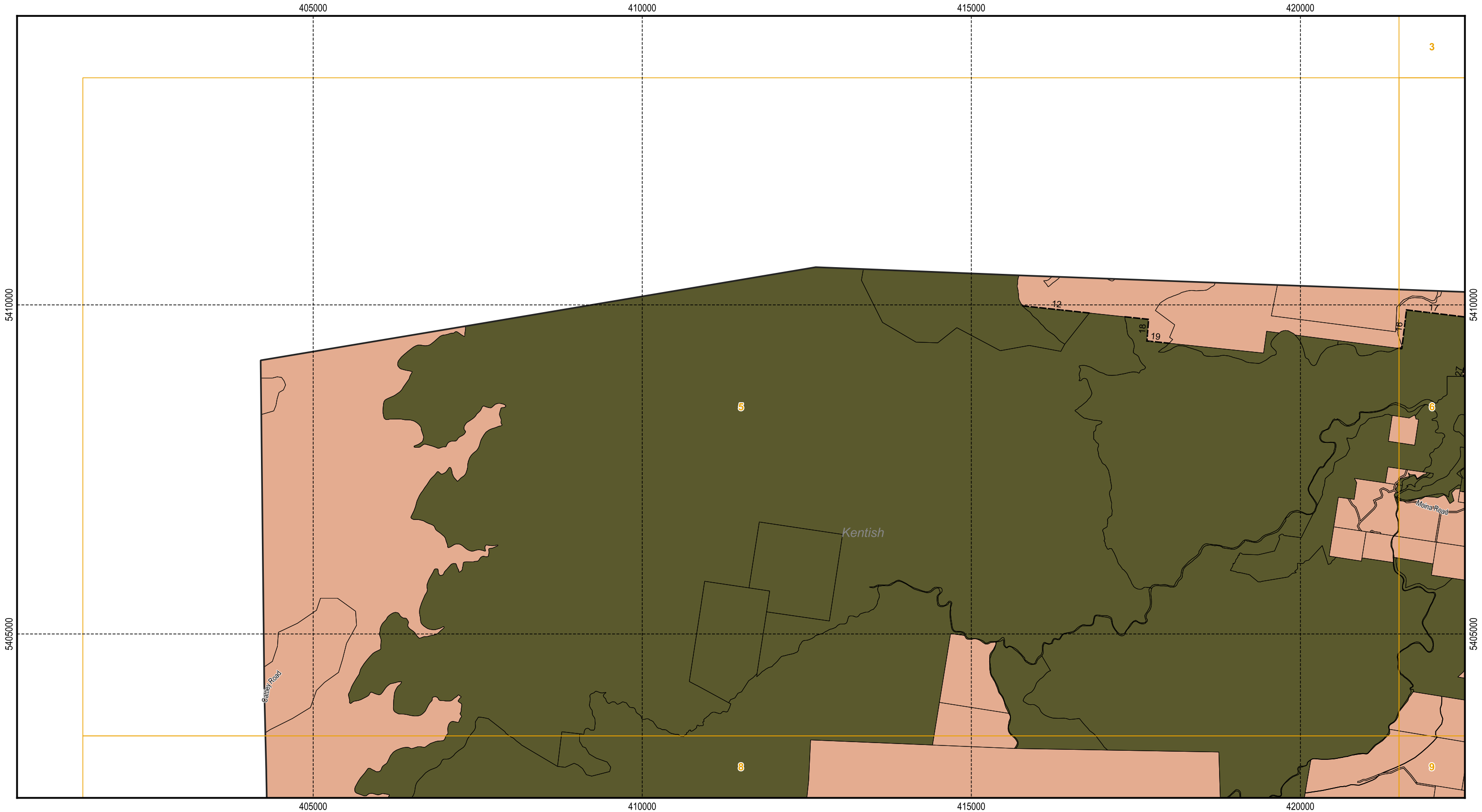
Map 4 of 14



Scale: 1:55,000 when printed at A3
Coordinate system: GDA94 MGA Zone 55
Planning data from Kentish Council
Base topographic data from the LIST © State of Tasmania
Print Date: 21/04/2023 Cadastre Date: 09/04/2023



Tasmanian Planning Scheme - Zones: Kentish Local Provisions Schedule



Legend

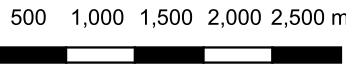
- | | | |
|-------------------------|--------------------------|--------------------|
| General Residential | Commercial | Utilities |
| Inner Residential | Light Industrial | Community Purpose |
| Low Density Residential | General Industrial | Recreation |
| Rural Living | Rural | Open Space |
| Village | Agriculture | Future Urban |
| Urban Mixed Use | Landscape Conservation | Particular Purpose |
| Local Business | Environmental Management | Zone Boundaries |
| General Business | Major Tourism | Cadastral parcels |
| Central Business | Port and Marine | |

Zone boundaries:

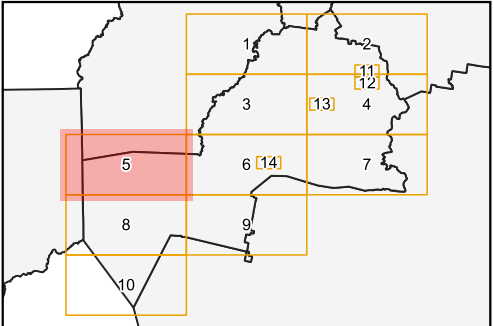
12. Coordinated line (5409984.4E, 415782N) to (5409876.2E, 416794.4N) GDA94
16. Coordinated line (5409340E, 421489.3N) to (5409333.1E, 421543N) to (5409923.5E, 421614.6N) GDA94
18. Coordinated line (5409818.1E, 417338.5N) to (5409780E, 417694.6N) to (5409451.9E, 417670.1N) GDA94
19. Coordinated line (5409451.9E, 417670.1N) to (5409417E, 418004.6N) GDA94



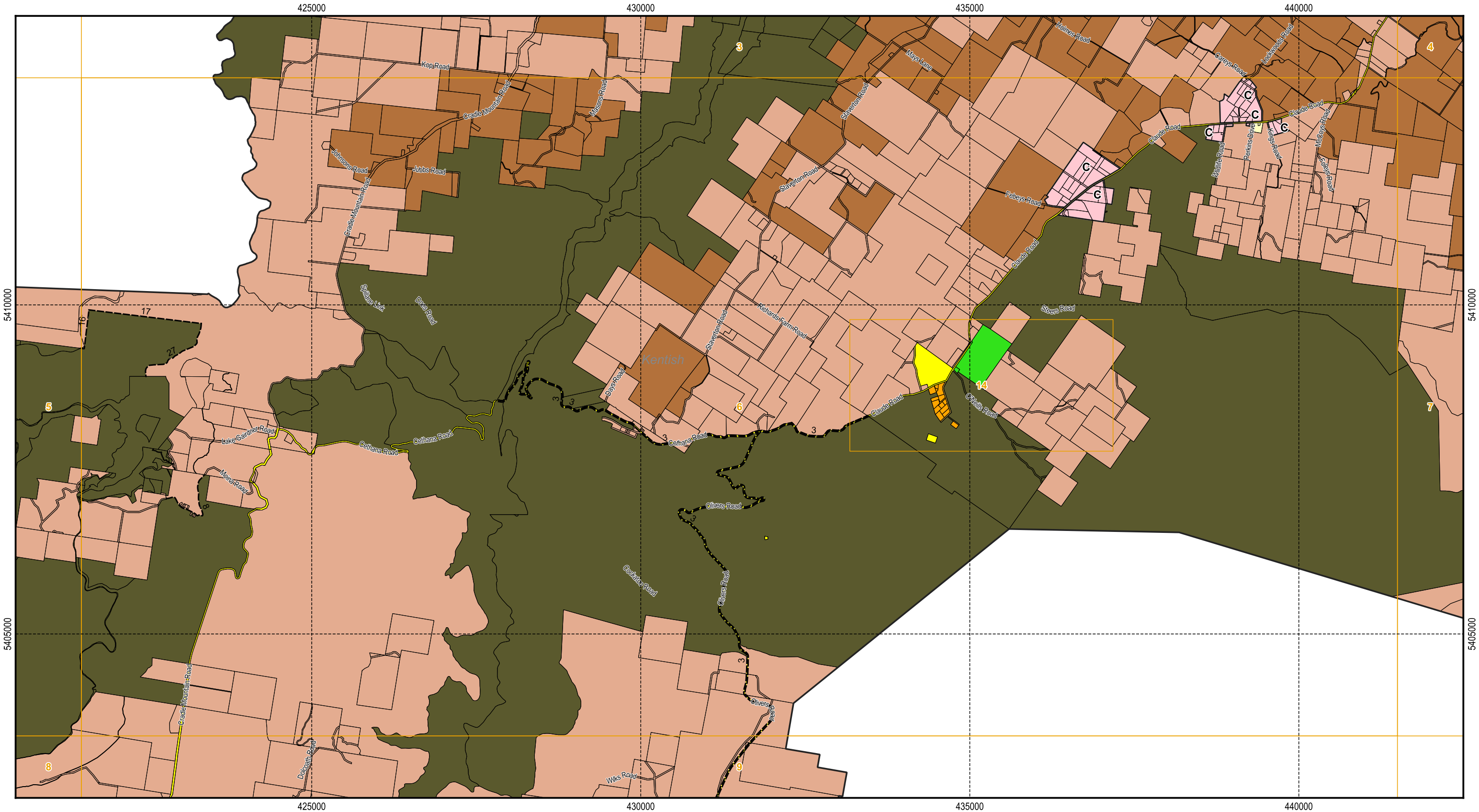
Map 5 of 14



Scale: 1:55,000 when printed at A3
Coordinate system: GDA94 MGA Zone 55
Planning data from Kentish Council
Base topographic data from the LIST © State of Tasmania
Print Date: 21/04/2023 Cadastre Date: 09/04/2023



Tasmanian Planning Scheme - Zones: Kentish Local Provisions Schedule



Legend

General Residential	Commercial	Utilities
Inner Residential	Light Industrial	Community Purpose
Low Density Residential	General Industrial	Recreation
Rural Living	Rural	Open Space
Village	Agriculture	Future Urban
Urban Mixed Use	Landscape Conservation	Particular Purpose
Local Business	Environmental Management	Zone Boundaries
General Business	Major Tourism	Cadastral parcels
Central Business	Port and Marine	

Zone boundaries:

3. 10m from road centreline
8. Road centreline
16. Coordinated line (5409340E, 421489.3N) to (5409333.1E, 421543N) to (5409923.5E, 421614.6N) GDA94
17. Coordinated line (5409923.5E, 421614.6N) to (5409718E, 423311.2N) to (5409716.9E, 423321N) GDA94
27. SE bank of Wilmot River

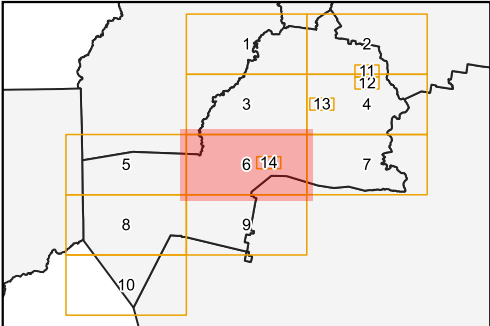


Map 6 of 14

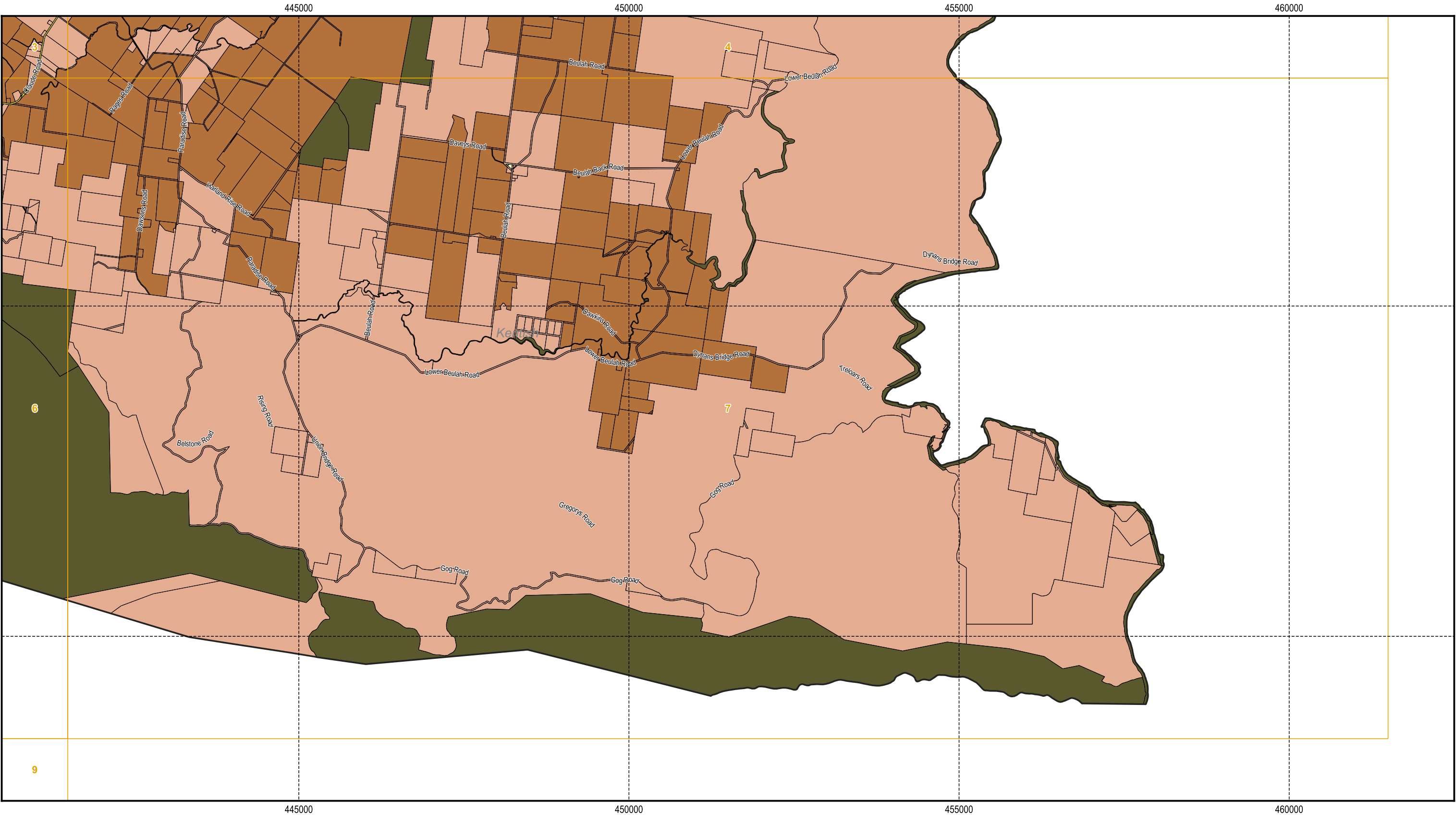
500 1,000 1,500 2,000 2,500 m



Scale: 1:55,000 when printed at A3
Coordinate system: GDA94 MGA Zone 55
Planning data from Kentish Council
Base topographic data from the LIST © State of Tasmania
Print Date: 21/04/2023 Cadastre Date: 09/04/2023



Tasmanian Planning Scheme - Zones: Kentish Local Provisions Schedule



Legend

General Residential	Commercial	Utilities
Inner Residential	Light Industrial	Community Purpose
Low Density Residential	General Industrial	Recreation
Rural Living	Rural	Open Space
Village	Agriculture	Future Urban
Urban Mixed Use	Landscape Conservation	Particular Purpose
Local Business	Environmental Management	Zone Boundaries
General Business	Major Tourism	Cadastral parcels
Central Business	Port and Marine	

Zone boundaries:

2. between road casement

11. Coordinated line (5408094.7E, 454751.3N) to (5408080.7E, 454770.9N) GDA94

N

Map 7 of 14

500 1,000 1,500 2,000 2,500 m

KENTISH

Scale: 1:55,000 when printed at A3

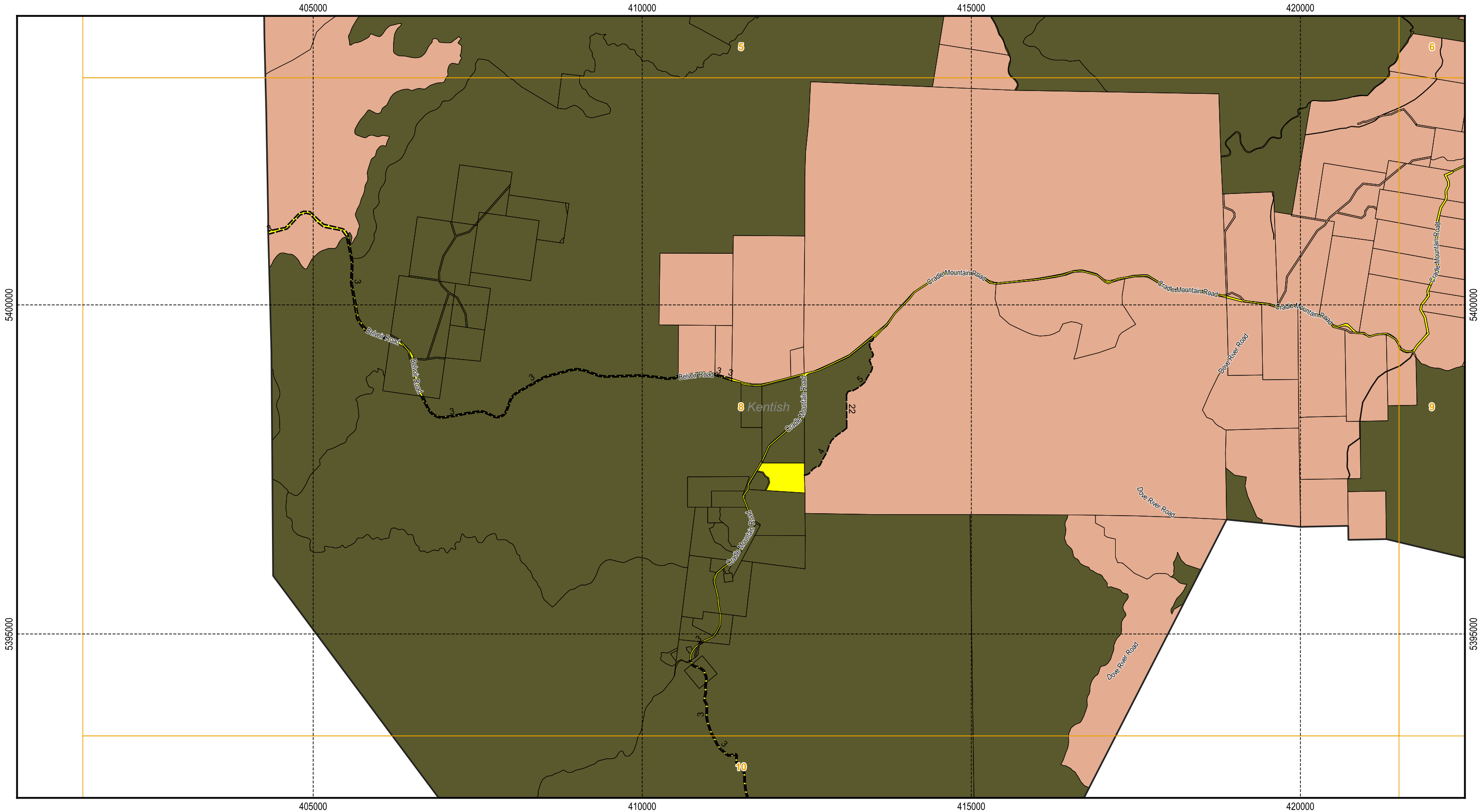
Coordinate system: GDA94 MGA Zone 55

Planning data from Kentish Council

Base topographic data from the LIST © State of Tasmania

Print Date: 21/04/2023 Cadastre Date: 09/04/2023

Tasmanian Planning Scheme - Zones: Kentish Local Provisions Schedule



Legend

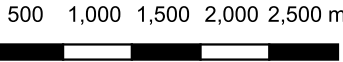
General Residential	Commercial	Utilities
Inner Residential	Light Industrial	Community Purpose
Low Density Residential	General Industrial	Recreation
Rural Living	Rural	Open Space
Village	Agriculture	Future Urban
Urban Mixed Use	Landscape Conservation	Particular Purpose
Local Business	Environmental Management	Zone Boundaries
General Business	Major Tourism	Cadastral parcels
Central Business	Port and Marine	

Zone boundaries:

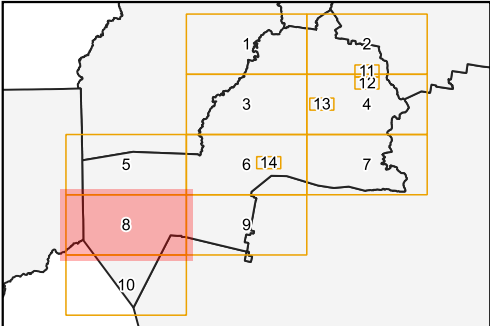
- 1. Between title corners
- 3. 10m from road centreline
- 4. Contour 850m
- 5. Centreline of Iris River
- 22. Coordinated line (5398636.8E, 413105N) to (5398089.6E, 413128.1N) GDA94



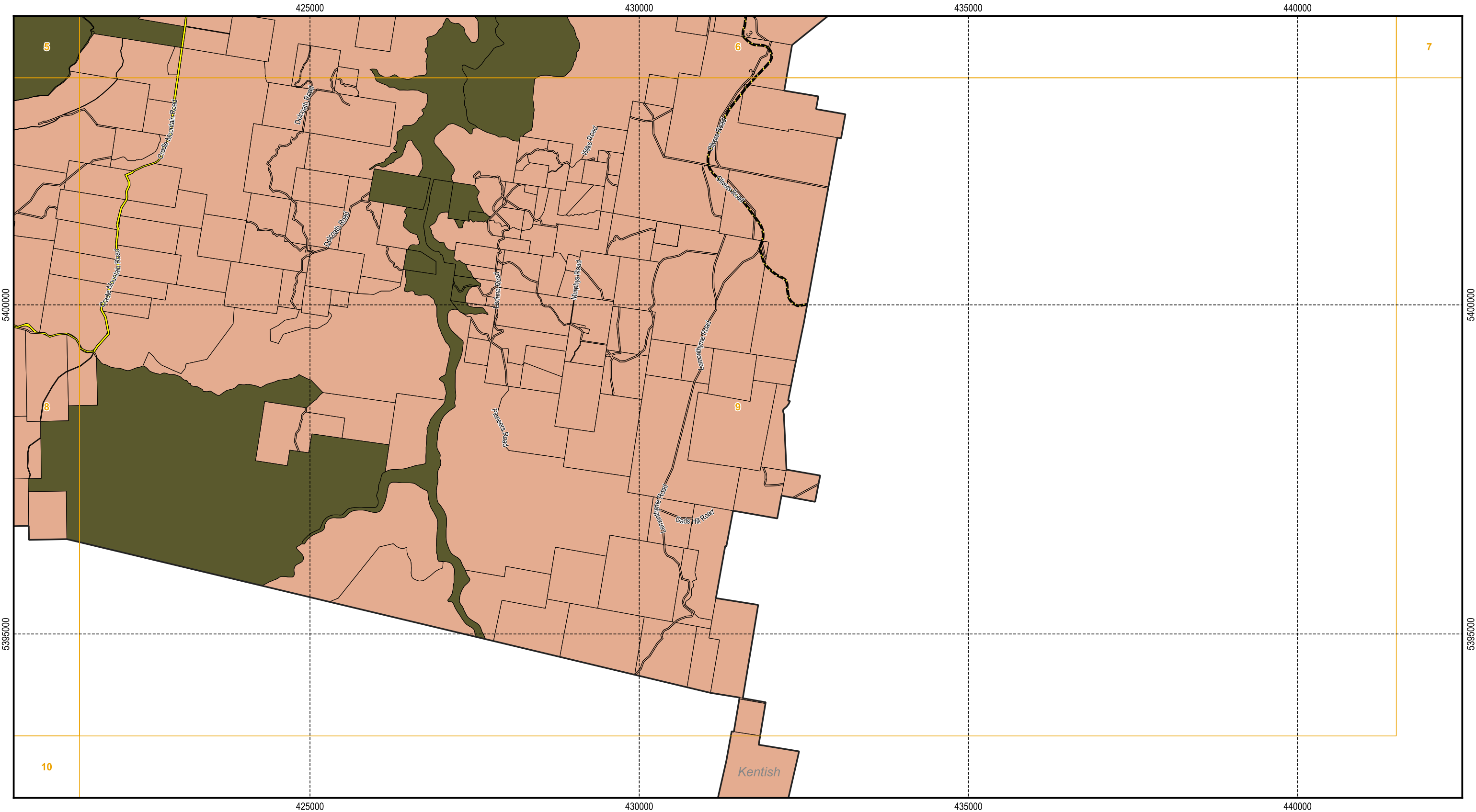
Map 8 of 14



Scale: 1:55,000 when printed at A3
Coordinate system: GDA94 MGA Zone 55
Planning data from Kentish Council
Base topographic data from the LIST © State of Tasmania
Print Date: 21/04/2023 Cadastre Date: 09/04/2023



Tasmanian Planning Scheme - Zones: Kentish Local Provisions Schedule



Legend

General Residential	Commercial	Utilities
Inner Residential	Light Industrial	Community Purpose
Low Density Residential	General Industrial	Recreation
Rural Living	Rural	Open Space
Village	Agriculture	Future Urban
Urban Mixed Use	Landscape Conservation	Particular Purpose
Local Business	Environmental Management	Zone Boundaries
General Business	Major Tourism	Cadastral parcels
Central Business	Port and Marine	

Zone boundaries:

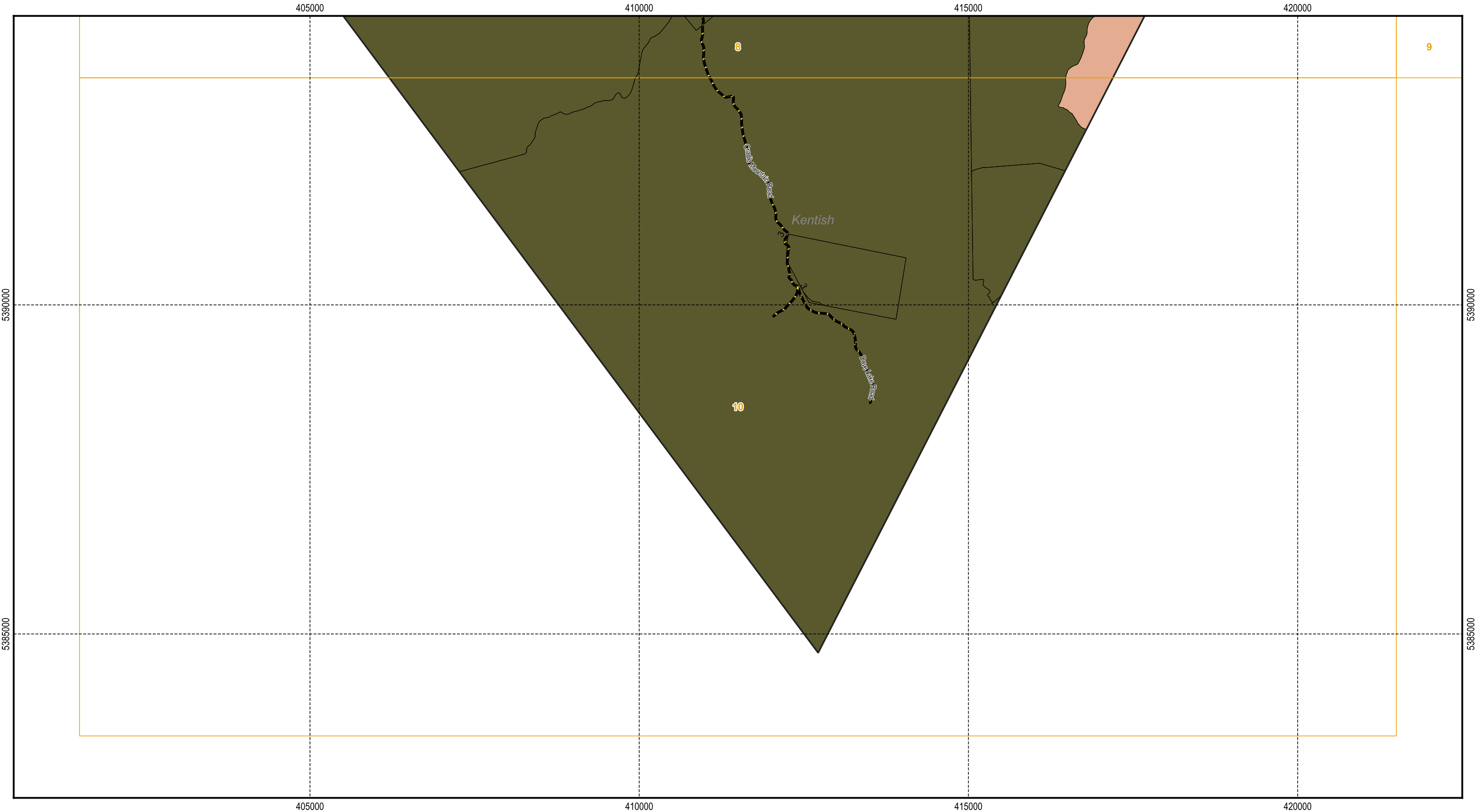
3. 10m from road centreline

N

Map 9 of 14

Scale: 1:55,000 when printed at A3
Coordinate system: GDA94 MGA Zone 55
Planning data from Kentish Council
Base topographic data from the LIST © State of Tasmania
Print Date: 21/04/2023 Cadastre Date: 09/04/2023

Tasmanian Planning Scheme - Zones: Kentish Local Provisions Schedule




Legend

General Residential	Commercial	Utilities
Inner Residential	Light Industrial	Community Purpose
Low Density Residential	General Industrial	Recreation
Rural Living	Rural	Open Space
Village	Agriculture	Future Urban
Urban Mixed Use	Landscape Conservation	Particular Purpose
Local Business	Environmental Management	Zone Boundaries
General Business	Major Tourism	Cadastral parcels
Central Business	Port and Marine	

Zone boundaries:


3. 10m from road centreline



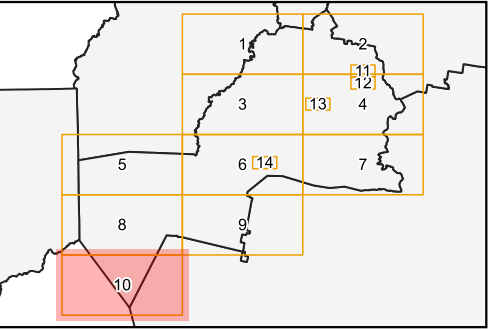
N

Map 10 of 14

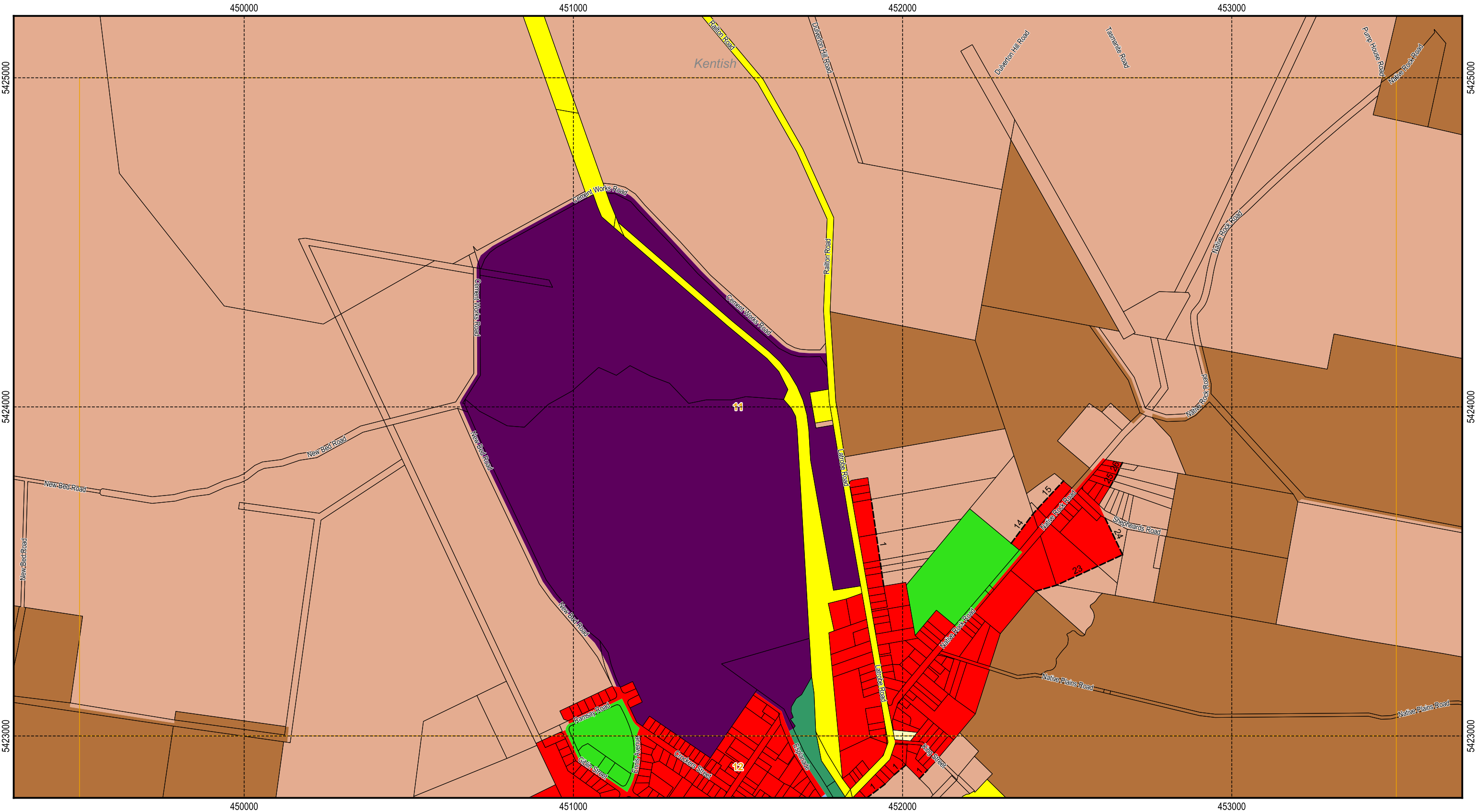
500 1,000 1,500 2,000 2,500 m



Scale: 1:55,000 when printed at A3
Coordinate system: GDA94 MGA Zone 55
Planning data from Kentish Council
Base topographic data from the LIST © State of Tasmania
Print Date: 21/04/2023 Cadastre Date: 09/04/2023



Tasmanian Planning Scheme - Zones: Kentish Local Provisions Schedule



Legend

General Residential	Commercial	Utilities
Inner Residential	Light Industrial	Community Purpose
Low Density Residential	General Industrial	Recreation
Rural Living	Rural	Open Space
Village	Agriculture	Future Urban
Urban Mixed Use	Landscape Conservation	Particular Purpose
Local Business	Environmental Management	Zone Boundaries
General Business	Major Tourism	Cadastral parcels
Central Business	Port and Marine	

Zone boundaries:

1. Between title corners

14. Coordinated line (5423585.4E, 452330.2N) to (5423675.2E, 452396.9N) to (5423690.5E, 452410.2N) GDA94

15. Coordinated line (5423690.5E, 452410.2N) to (5423775E, 452488.9N) GDA94

23. Coordinated line (5423439.9E, 452404.4N) to (5423458E, 452467.5N) to (5423550.6E, 452668.5N) GDA94

24. Coordinated line (5423550.6E, 452668.5N) to (5423662.3E, 452615.2N) GDA94

25. Coordinated line (5423755.8E, 452629.9N) to (5423774.9E, 452640.6N) to (5423794E, 452651.1N) GDA94

26. Coordinated line (5423794E, 452651.1N) to (5423814.1E, 452659.6N) to (5423830.3E, 452668.1N) GDA94

N

Map 11 of 14

100 200 300 400 500 m

KENTISH

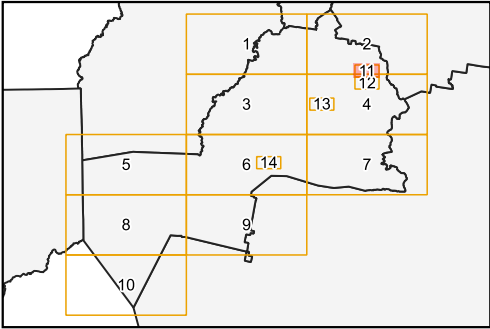
Scale: 1:11,000 when printed at A3

Coordinate system: GDA94 MGA Zone 55

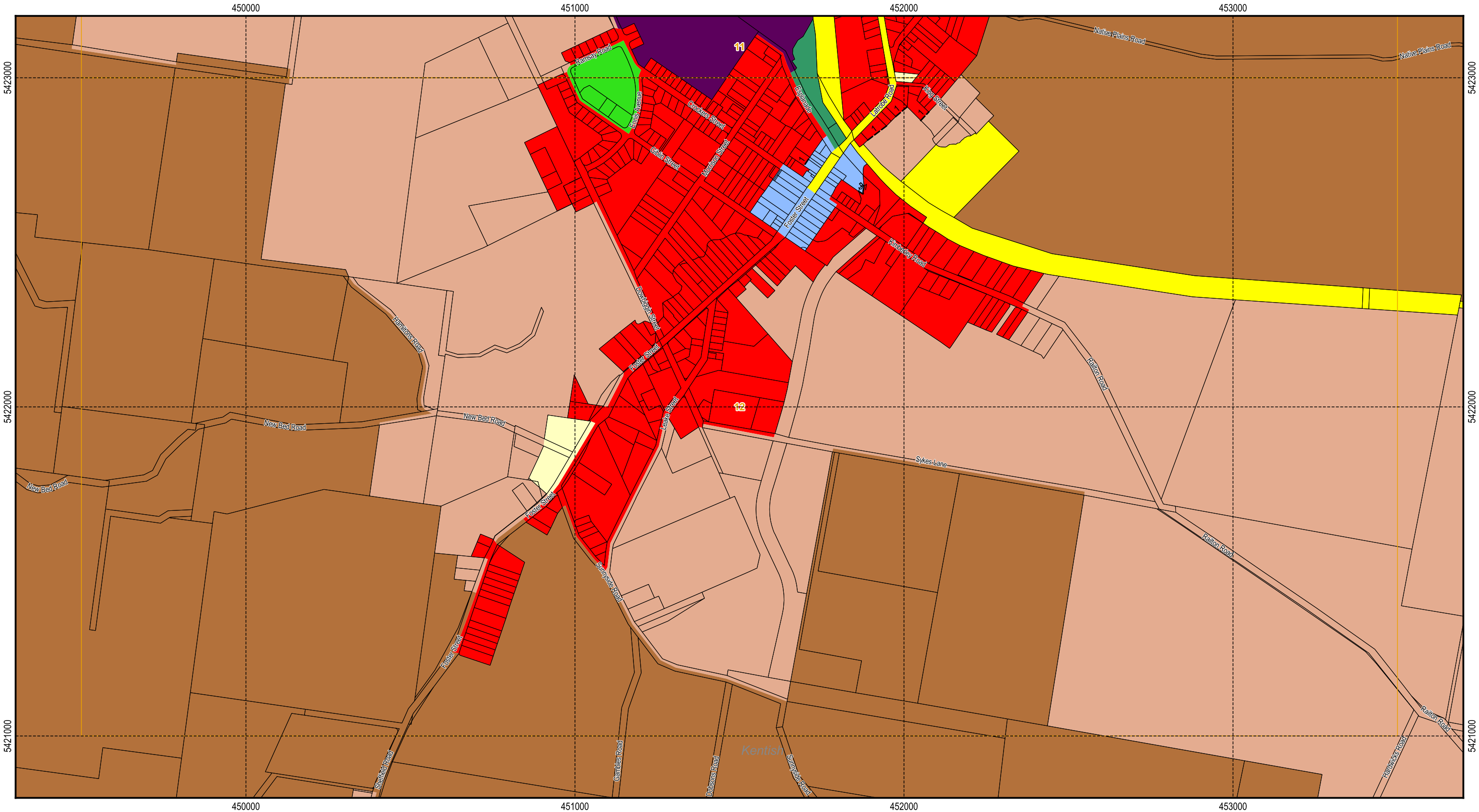
Planning data from Kentish Council

Base topographic data from the LIST © State of Tasmania

Print Date: 21/04/2023 Cadastre Date: 09/04/2023



Tasmanian Planning Scheme - Zones: Kentish Local Provisions Schedule



Legend

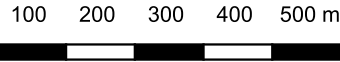
<div></div> General Residential	<div></div> Commercial	<div></div> Utilities
<div></div> Inner Residential	<div></div> Light Industrial	<div></div> Community Purpose
<div></div> Low Density Residential	<div></div> General Industrial	<div></div> Recreation
<div></div> Rural Living	<div></div> Rural	<div></div> Open Space
<div></div> Village	<div></div> Agriculture	<div></div> Future Urban
<div></div> Urban Mixed Use	<div></div> Landscape Conservation	<div></div> Particular Purpose
<div></div> Local Business	<div></div> Environmental Management	<div></div> Zone Boundaries
<div></div> General Business	<div></div> Major Tourism	<div></div> Cadastral parcels
<div></div> Central Business	<div></div> Port and Marine	

Zone boundaries:

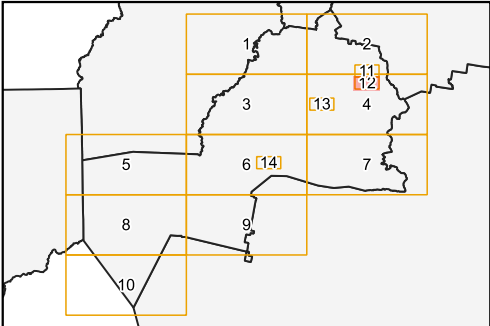
- Between title corners
- Coordinated line (5422652.5E, 451875.9N) to (5422656E, 451876.1N) to (5422660.2E, 451877N) GDA94
- Coordinated line (5422660.2E, 451877N) to (5422664.7E, 451878.1N) to (5422671.2E, 451878.4N) GDA94
- Coordinated line (5422654.6E, 451862.6N) to (5422646.6E, 451876.3N) to (5422652.5E, 451875.9N) GDA94



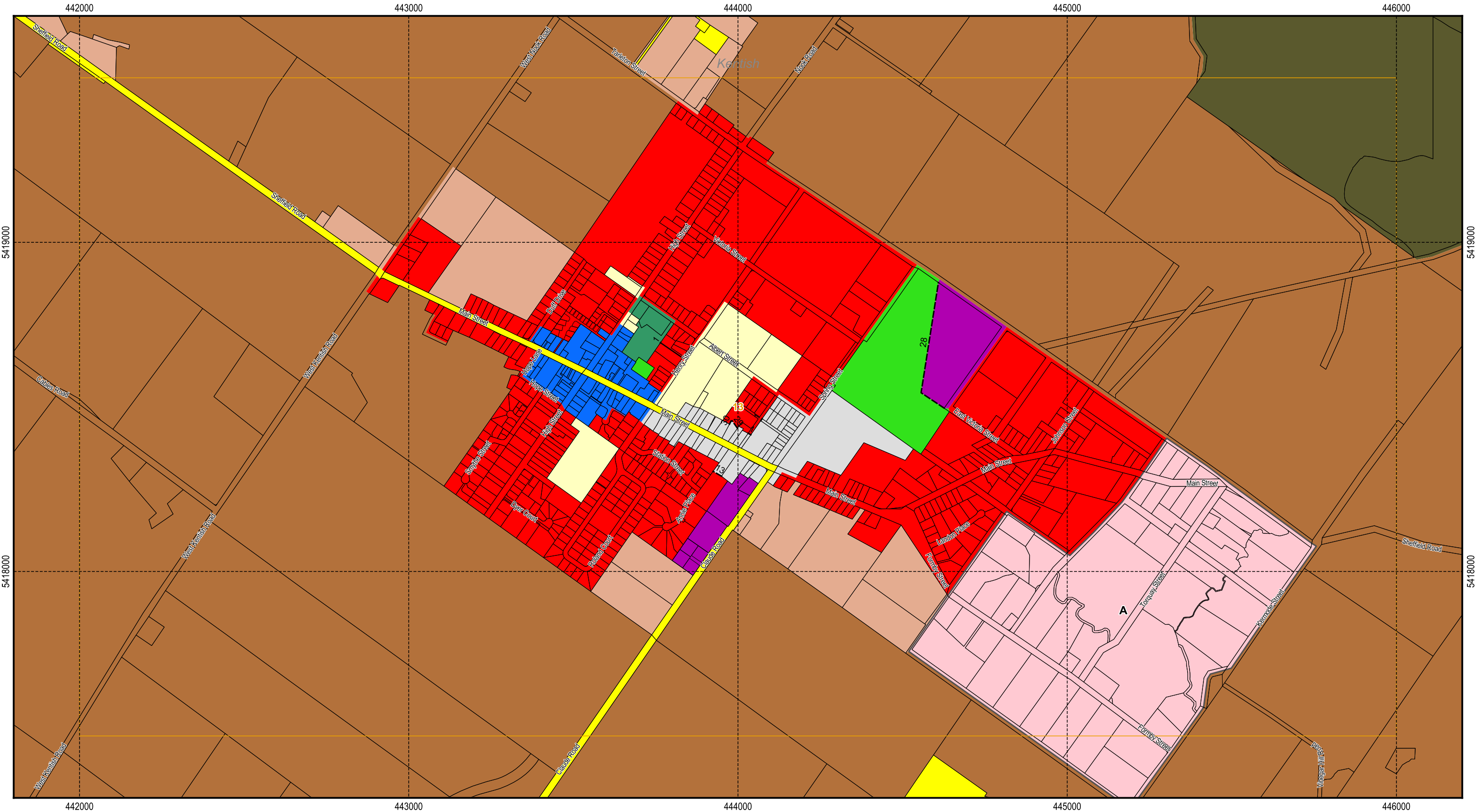
Map 12 of 14



Scale: 1:11,000 when printed at A3
Coordinate system: GDA94 MGA Zone 55
Planning data from Kentish Council
Base topographic data from the LIST © State of Tasmania
Print Date: 21/04/2023 Cadastre Date: 09/04/2023



Tasmanian Planning Scheme - Zones: Kentish Local Provisions Schedule



General Residential

Inner Residential

Low Density Residential

Rural Living

Village

Urban Mixed Use

Local Business

General Business

Central Business

Commercial

Light Industrial

General Industrial

Rural

Agriculture

Landscape Conservation

Environmental Management

Major Tourism

Port and Marine

Utilities

Community Purpose

Recreation

Open Space

Future Urban

Particular Purpose

Zone Boundaries

Cadastral parcels

Zone boundaries:

1. Between title corners

13. Coordinated line (5418289.4E, 443950N) to (5418304.2E, 443924.6N) GDA94

28. Coordinated line (5418496.2E, 444626.5N) to (5418543E, 444556.4N) to (5418877.8E, 444609N) GDA94

29. Coordinated line (5418434.9E, 443998.6N) to (5418458.1E, 443982.4N) to (5418456.3E, 443978.8N) GDA94

30. Coordinated line (5418456.3E, 443978.8N) to (5418447.6E, 443974.5N) GDA94

N

100

200

300

400

500 m

Map 13 of 14

KENTISH

Scale: 1:11,000 when printed at A3

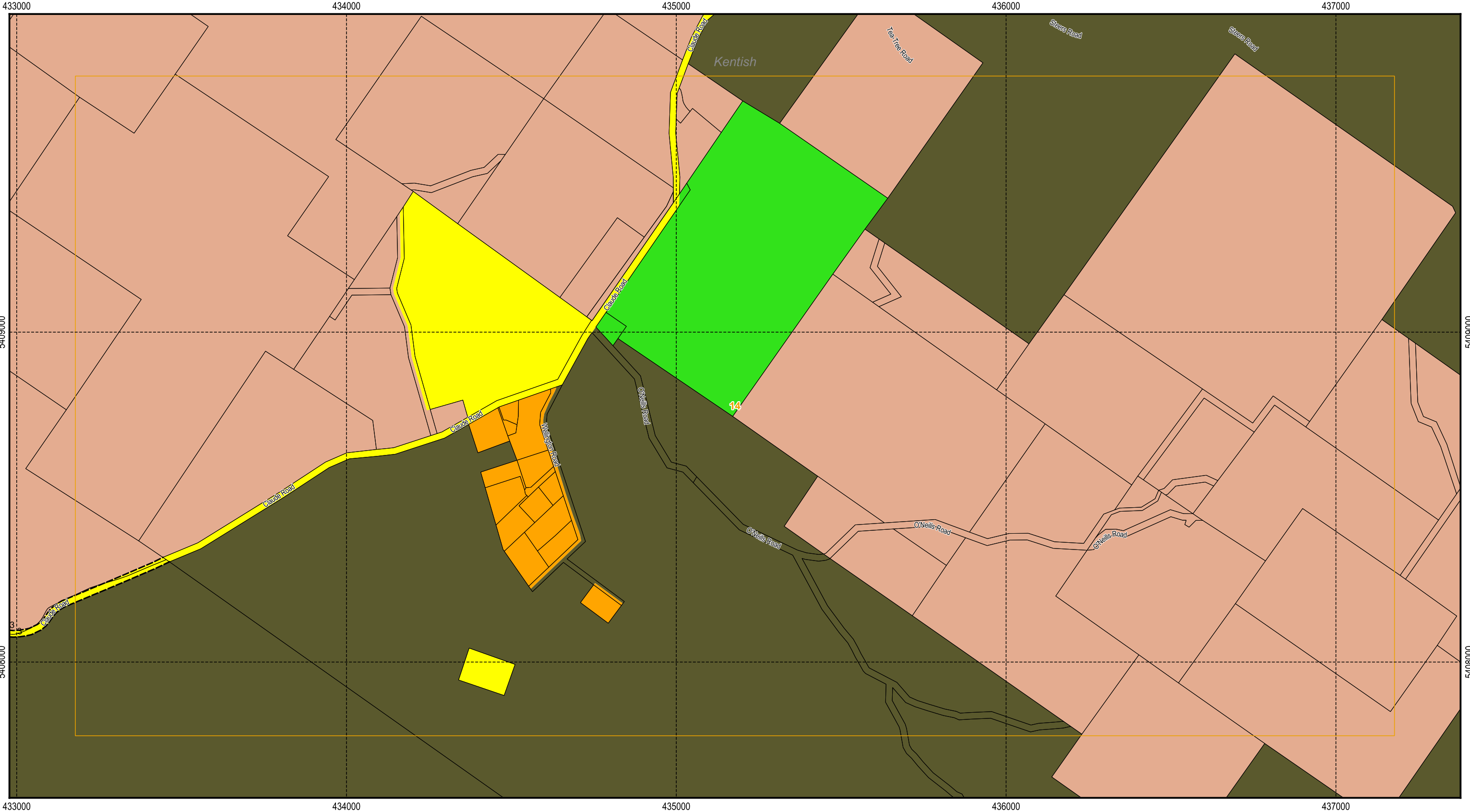
Coordinate system: GDA94 MGA Zone 55

Planning data from Kentish Council

Base topographic data from the LIST © State of Tasmania

Print Date: 21/04/2023 Cadastre Date: 09/04/2023

Tasmanian Planning Scheme - Zones: Kentish Local Provisions Schedule



Legend

General Residential	Commercial	Utilities
Inner Residential	Light Industrial	Community Purpose
Low Density Residential	General Industrial	Recreation
Rural Living	Rural	Open Space
Village	Agriculture	Future Urban
Urban Mixed Use	Landscape Conservation	Particular Purpose
Local Business	Environmental Management	Zone Boundaries
General Business	Major Tourism	Cadastral parcels
Central Business	Port and Marine	

Zone boundaries:

Map 14 of 14

Scale: 1:11,000 when printed at A3
Coordinate system: GDA94 MGA Zone 55
Planning data from Kentish Council
Base topographic data from the LIST © State of Tasmania
Print Date: 21/04/2023 Cadastre Date: 09/04/2023