

From: Janet McGlynn
Sent: Mon, 21 Feb 2022 14:37:06 +1100
To: Huon Valley Council
Cc: Michael McGlynn
Subject: FW: [External] Re: "Draft Huon Valley Local Provisions Schedule"
Attachments: Zone Map screen shot.docx, Duggans mining lease.docx, Draft-LPS-supporting-report-Appendix-61.XLSX, Example of cut out of our land.jpg

For the attention of The General Manager Huon Valley Council

Representation for Mr Michael McGlynn & Mrs Janet McGlynn
 Phone number - 0448201452 (Michael), 0477308655 (Janet)
 E mail mike.mcglynn@allportsltd.com or janet.mcglynn@wfi.com.au

PID 2247277

Parcel Address 8520 Channel Highway Woodstock

CT 139543/4

Area 88471 76

Under the proposed Tasmanian Planning Scheme Consultation our above named property is deemed to be agriculture when all the properties around us are Rural. Having looked into this matter further we believe we too should be Rural for the following reasons.

1. Property size **8.9ha**
2. No access to water – house run on tank water with a small dam.
3. Land noted as a Landslide Hazard Area. (as noted on Appendix 60 of the Draft LPS Zone Maps) map 14 and the Draft LPS report Appendix 61 line 12922 – where noted Attenuation Area, Biodiversity Protection Area, Bushfire Prone Areas, **Landslide Hazard Area**, Scenic Landscape Corridor
https://www.planning.tas.gov.au/_data/assets/pdf_file/0007/645253/Draft-LPS-supporting-report-Appendix-60-zone-maps.PDF
4. Land Capability – From appendix 31
https://www.planning.tas.gov.au/_data/assets/pdf_file/0009/645264/Draft-LPS-supporting-report-Appendix-31-59-Copy.PDFAs see pg 3 – minimum irrigated Perennial Horticulture 10ha, we are only 8.9ha and therefore **not** within the Enterprise Cluster and minimum title sizes (2016)
Table 2. Enterprise clusters and minimum title sizes (from ALMP 2016).

Cluster	Title Size	Access to Irrigation
ES1	Irrigated Perennial Horticulture	10ha
ES2	Vegetable Production	25ha
ES3	Irrigated Grazing (Dairy)	40ha
ES4	Broadacre – Cropping and Livestock	133
ES5	Broadacre – Dryland Pastoral	333ha

For titles to be considered potentially suitable for ES1, ES2 or ES3 they also needed to have access to an irrigation supply. The ALMP developed a conservative method to determine if there was potential access to irrigation resources. A 3km buffer was provided for around existing water allocations, functional bores (flow rate >10l/sec) and major watercourses. The methodology also considered topography to determine if pumping would likely be economically viable. This conservative method has contributed to many titles being mapped as potentially suitable for ES1, ES2 or ES3, however, local scale assessment might determine that there is actually little to no potential for water resources, which could then impact on their potential for consideration for the Agricultural Zone. Pg 5 **LAND CAPABILITY** When considering the physical limitations for agricultural use of a title or area the Tasmanian Land Capability classification system is a useful tool to utilise.

The Land Capability system incorporates the following site characteristics.

- Climatic limitations (temperature, altitude, rainfall)
- Soil limitations (soil depth, salinity, coarse fragments and rock outcrops) – We are on the same hill as Duggans quarry – (see picture of soil depth)
- Wetness limitations (soil drainage, flood risk) -
- Erosion (water erosion, wind erosion, mass movement) – We are listed by you and landslide hazard
- Complex topography.

Land Capability report to follow

5. Duggans Mining Lease runs the full length of our property as land suitable for mining rock. As seen on the list map (or see attached screenshot)

Identify Results
Disclaimer ×

One feature found in one layer

Feature	
NAME	1918P/M
DETAILS	Details
TENEMENTTYPE	LEASE
COMMODITY	Stone and Gravel
OWNER	Duggans Pty Limited
STATUS	Granted
AREA	93 hectares
APPLICATIONDATE	29-MAR-2011
GRANTDATE	22-JUN-2011
EXPIREDATE	01-OCT-2027
FILEID	33324

POI: GDA94 MGA55 : 502892E, 5229098N

Identify Options

6. Telstra has fibre optic cable from the new tower at Duggans plus Telstra right through the front. Cannot be certain on cable depths due to animal grazing and movement.

It is for all of these reasons that we consider our land should be returned to Rural as it was previously in the Huon planning scheme.

We welcome your response.

With Kind Regards

Janet McGlynn
Area Manager, WFI

M 0477 308 655

E Janet.McGlynn@wfi.com.au

L au.linkedin.com/in/janetmcglynn1/en

W wfi.com.au



Good people to know.

Insurance is issued by Insurance Australia Limited ABN 11 000 016 722 AFSL 227681 trading as WFI. Any advice is general only.

To see if a product is right for you, always consider your own circumstances and the relevant Product Disclosure Statement and Target Market Determination available from www.wfi.com.au. The level of cover we provide may be different to that under other general insurance products. If you're not completely satisfied with your policy, you may request cancellation in writing to us, or by contacting us using the details below. Information about our cooling-off period can be found in our Product Disclosure Statement.

If you would like any further information about this financial product, or if you need to speak with us, you can reach us by:

1. Calling Janet McGlynn on 0477 308 655
2. Contacting WFI on 1300 934 934
3. Emailing Janet McGlynn at janet.mcglynn@wfi.com.au

The information transmitted in this message and its attachments (if any) is intended only for the person or entity to which it is addressed.

The message may contain confidential and/or privileged material. Any review, retransmission, dissemination or other use of, or taking of any action in reliance upon this information, by persons or entities other than the intended recipient is prohibited.

If you have received this in error, please contact the sender and delete this e-mail and associated material from any computer.

The intended recipient of this e-mail may only use, reproduce, disclose or distribute the information contained in this e-mail and any attached files, with the permission of the sender.

This message has been scanned for viruses.

The information transmitted in this message and its attachments (if any) is intended only for the person or entity to which it is addressed.

The message may contain confidential and/or privileged material. Any review, retransmission, dissemination or other use of, or taking of any action in reliance upon this information, by persons or entities other than the intended recipient is prohibited.

If you have received this in error, please contact the sender and delete this e-mail and associated material from any computer.

The intended recipient of this e-mail may only use, reproduce, disclose or distribute the information contained in this e-mail and any attached files, with the permission of the sender.

This message has been scanned for viruses.





Tasmanian Planning Scheme Consultation

Search by address

lon: 147.031317 lat: -43.086536

Titles 1

PID	2247277
Parcel Address	8520 CHANNEL HWY
CT	139543/4
Tenure Type	Freehold Title
Locality	WOODSTOCK
Improvements	DWELLING
Area	88471.76

Overlays

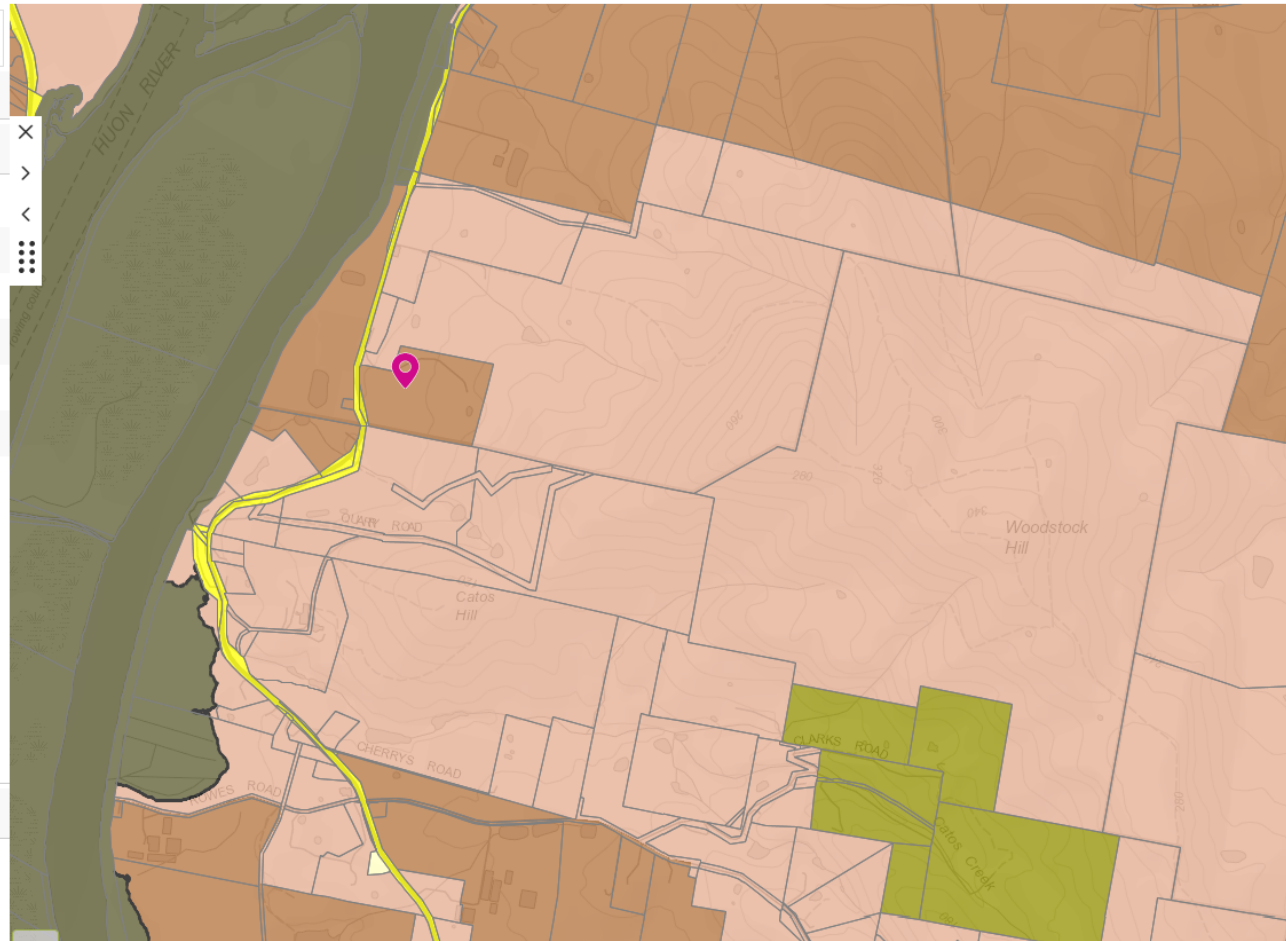
- Bushfire Prone Areas
- Landslip Hazard
- Scenic Road Corridor

NOTE: Additional codes are not mapped and may be triggered based on description

Links

[Priority Veg Report](#)

Zones 1



- Coastal Erosion Hazard Code
- Coastal Inundation Hazard Code
- Landslip Hazard Code
- Natural Assets Code
- Bushfire-prone Areas Code
- General Overlays
- Zones

Zone Boundaries

Zones

- Agriculture
- Commercial
- Community Purpose
- Environmental Management
- Future Urban
- General Business
- General Industrial
- General Residential
- Landscape Conservation
- Local Business
- Low Density Residential
- Open Space
- Particular Purpose
- Recreation
- Rural

Draft LPS supporting report App | LISTmap - Land Information Syst | +

maps.thelist.tas.gov.au/listmap/app/list/map

Home Maps 8420 Channel Hwy ? Help Login

Tools Basemaps Add Layer +

Manage Layers

Search Add External Service

Search for Clear

- Category 4 Exploration Licence (258) ✓
- Category 5 Exploration Licence (259) ✓
- Category 6 Exploration Licence (260) ✓
- MRT Historic Land District Charts (3359) ✓
- MRT Historic Mineral Charts Index (3358) ✓
- MRT Strategic Resources- Draft (3297) ✓
- Mineral Occurrences (2036) ✓
- Mining Leases (253) ✓
- Strategic Prospectivity Zones (254) ✓
- Unavailable Areas (1218) ✓
- Aquaculture (6 layers)
- Agriculture (12 layers)
- Wild Fisheries (7 layers)

Search Results for '8420 Channel Highway Cradoc Tas 7109'

1 features found

- Postal address: 8420 Channel Hwy, Cradoc Tas 7109

200 m GDA94 MGA55 Copyright Notice

TASMAP's new 1:50 000 Topographic Mapping Series Land Tasmania

CT	PID	PROP_ADDRESS_LINE_1	PROP_ADDRESS_LINE_2
28903/15	1784919	25 WILLS RD	ABELS BAY TAS 7112
80538/18	1797293	443 ABELS BAY RD	ABELS BAY TAS 7112
80538/19	1797306	445 ABELS BAY RD	ABELS BAY TAS 7112
129385/1	1797314	447 ABELS BAY RD	ABELS BAY TAS 7112
18197/1	1812529	228 ABELS BAY RD	ABELS BAY TAS 7112
9118/33	2174127	SANDROCK LOOP	ABELS BAY TAS 7112
9118/31	2174135	SANDROCK LOOP	ABELS BAY TAS 7112
9118/32	2174151	SANDROCK LOOP	ABELS BAY TAS 7112
145004/2	2701943	11 JENNINGS RD	ABELS BAY TAS 7112
145004/1	2701951	463 ABELS BAY RD	ABELS BAY TAS 7112
28903/2	2767045	26 SANDREEF RD	ABELS BAY TAS 7112
28903/16	2767053	21 WILLS RD	ABELS BAY TAS 7112
155183/1	2900395	34 SANDREEF RD	ABELS BAY TAS 7112
80538/17	2909162	441 ABELS BAY RD	ABELS BAY TAS 7112
160330/1	3008382	Lot 1 WILLS RD	ABELS BAY TAS 7112
160330/2	3008390	Lot 2 WILLS RD	ABELS BAY TAS 7112
158418/1	3057635	49A WILLS RD	ABELS BAY TAS 7112
160321/9	3070565	427 ABELS BAY RD	ABELS BAY TAS 7112
9118/18	3115962	12 SANDROCK LOOP	ABELS BAY TAS 7112
9118/19	3115970	10 SANDROCK LOOP	ABELS BAY TAS 7112
80538/14	3238743	437 ABELS BAY RD	ABELS BAY TAS 7112
80538/15	3238743	437 ABELS BAY RD	ABELS BAY TAS 7112
80538/16	3238743	437 ABELS BAY RD	ABELS BAY TAS 7112
63537/12	3566552	433 ABELS BAY RD	ABELS BAY TAS 7112
63537/13	3566560	435 ABELS BAY RD	ABELS BAY TAS 7112
55651/15	5864596	373 ABELS BAY RD	ABELS BAY TAS 7112
168303/1	5864609	375 ABELS BAY RD	ABELS BAY TAS 7112
55651/12	5864625	377 ABELS BAY RD	ABELS BAY TAS 7112
55651/11	5864633	379 ABELS BAY RD	ABELS BAY TAS 7112
10120/1	5864641	381 ABELS BAY RD	ABELS BAY TAS 7112
55651/9	5864676	387 ABELS BAY RD	ABELS BAY TAS 7112
55651/10	5864676	387 ABELS BAY RD	ABELS BAY TAS 7112
55651/8	5864684	389 ABELS BAY RD	ABELS BAY TAS 7112
55651/7	5864692	391 ABELS BAY RD	ABELS BAY TAS 7112
55651/6	5864705	393 ABELS BAY RD	ABELS BAY TAS 7112
55651/5	5864713	395 ABELS BAY RD	ABELS BAY TAS 7112
55651/4	5864721	397 ABELS BAY RD	ABELS BAY TAS 7112
55651/3	5864756	401 ABELS BAY RD	ABELS BAY TAS 7112
55651/2	5864756	401 ABELS BAY RD	ABELS BAY TAS 7112
55651/1	5864764	403 ABELS BAY RD	ABELS BAY TAS 7112
63537/1	5864764	403 ABELS BAY RD	ABELS BAY TAS 7112
18197/5	5864772	188 ABELS BAY RD	ABELS BAY TAS 7112
18197/4	5864780	206 ABELS BAY RD	ABELS BAY TAS 7112
18197/3	5864799	216 ABELS BAY RD	ABELS BAY TAS 7112
18197/2	5864801	ABELS BAY RD	ABELS BAY TAS 7112
63537/3	5864852	409 ABELS BAY RD	ABELS BAY TAS 7112
63537/2	5864852	409 ABELS BAY RD	ABELS BAY TAS 7112
63537/10	5864887	429 ABELS BAY RD	ABELS BAY TAS 7112
80538/22	5865003	449 ABELS BAY RD	ABELS BAY TAS 7112

80538/23	5865011	451 ABELS BAY RD	ABELS BAY TAS 7112
80538/24	5865038	453 ABELS BAY RD	ABELS BAY TAS 7112
80538/25	5865046	459 ABELS BAY RD	ABELS BAY TAS 7112
80538/26	5865054	461 ABELS BAY RD	ABELS BAY TAS 7112
56035/28	5865070	467 ABELS BAY RD	ABELS BAY TAS 7112
56035/29	5865089	469 ABELS BAY RD	ABELS BAY TAS 7112
56035/30	5865097	471 ABELS BAY RD	ABELS BAY TAS 7112
56035/31	5865118	473 ABELS BAY RD	ABELS BAY TAS 7112
56035/32	5865126	475-477 ABELS BAY RD	ABELS BAY TAS 7112
56035/33	5865126	475-477 ABELS BAY RD	ABELS BAY TAS 7112
56035/34	5865142	479-481 ABELS BAY RD	ABELS BAY TAS 7112
56035/35	5865142	479-481 ABELS BAY RD	ABELS BAY TAS 7112
131928/1	5865169	483 ABELS BAY RD	ABELS BAY TAS 7112
9118/1	5865521	1 SANDROCK LOOP	ABELS BAY TAS 7112
9118/2	5865548	3 SANDROCK LOOP	ABELS BAY TAS 7112
9118/3	5865556	5 SANDROCK LOOP	ABELS BAY TAS 7112
9118/4	5865564	7 SANDROCK LOOP	ABELS BAY TAS 7112
9118/5	5865572	9 SANDROCK LOOP	ABELS BAY TAS 7112
9118/6	5865580	11 SANDROCK LOOP	ABELS BAY TAS 7112
9118/7	5865599	13 SANDROCK LOOP	ABELS BAY TAS 7112
9118/8	5865601	15 SANDROCK LOOP	ABELS BAY TAS 7112
9118/9	5865628	17 SANDROCK LOOP	ABELS BAY TAS 7112
9118/10	5865636	19 SANDROCK LOOP	ABELS BAY TAS 7112
9118/11	5865644	21 SANDROCK LOOP	ABELS BAY TAS 7112
9118/12	5865652	23 SANDROCK LOOP	ABELS BAY TAS 7112
9118/13	5865660	25 SANDROCK LOOP	ABELS BAY TAS 7112
9118/14	5865679	27 SANDROCK LOOP	ABELS BAY TAS 7112
9118/15	5865687	29 SANDROCK LOOP	ABELS BAY TAS 7112
9118/16	5865695	31 SANDROCK LOOP	ABELS BAY TAS 7112
9118/30	5865708	33 SANDROCK LOOP	ABELS BAY TAS 7112
9118/29	5865716	35 SANDROCK LOOP	ABELS BAY TAS 7112
9118/28	5865724	37 SANDROCK LOOP	ABELS BAY TAS 7112
9118/27	5865732	39 SANDROCK LOOP	ABELS BAY TAS 7112
9118/24	5865740	20 SANDROCK LOOP	ABELS BAY TAS 7112
9118/23	5865759	18 SANDROCK LOOP	ABELS BAY TAS 7112
9118/20	5865767	16 SANDROCK LOOP	ABELS BAY TAS 7112
9118/17	5865775	14 SANDROCK LOOP	ABELS BAY TAS 7112
9118/21	5865804	8 SANDROCK LOOP	ABELS BAY TAS 7112
9118/22	5865812	6 SANDROCK LOOP	ABELS BAY TAS 7112
9118/25	5865820	4 SANDROCK LOOP	ABELS BAY TAS 7112
9118/26	5865839	2 SANDROCK LOOP	ABELS BAY TAS 7112
138268/1	5868482	ABELS BAY RD	ABELS BAY TAS 7112
17834/1	7217974	152 ABELS BAY RD	ABELS BAY TAS 7112
250892/1	7233405	402 ABELS BAY RD	ABELS BAY TAS 7112
17834/3	7262943	328 ABELS BAY RD	ABELS BAY TAS 7112
28903/19	7317473	371 ABELS BAY RD	ABELS BAY TAS 7112
63537/11	7317502	431 ABELS BAY RD	ABELS BAY TAS 7112
28903/1	7317510	3 SANDREEF RD	ABELS BAY TAS 7112
28903/21	7317529	21 SANDREEF RD	ABELS BAY TAS 7112
28903/20	7317537	23 SANDREEF RD	ABELS BAY TAS 7112

28903/17	7317553	SANDREEF RD	ABELS BAY TAS 7112
28903/4	7317609	15 JENNINGS RD	ABELS BAY TAS 7112
28903/3	7317617	21 JENNINGS RD	ABELS BAY TAS 7112
28903/12	7317625	43 JENNINGS RD	ABELS BAY TAS 7112
28903/14	7317641	51 WILLS RD	ABELS BAY TAS 7112
28903/9	7317692	60 JENNINGS RD	ABELS BAY TAS 7112
28903/7	7317705	JENNINGS RD	ABELS BAY TAS 7112
28903/8	7317705	JENNINGS RD	ABELS BAY TAS 7112
28903/6	7317721	12 JENNINGS RD	ABELS BAY TAS 7112
29507/1	7375470	434 ABELS BAY RD	ABELS BAY TAS 7112
244204/1	7418418	ABELS BAY RD	ABELS BAY TAS 7112
231571/1	7418418	ABELS BAY RD	ABELS BAY TAS 7112
230291/1	7418418	ABELS BAY RD	ABELS BAY TAS 7112
28146/1	7418434	492 ABELS BAY RD	ABELS BAY TAS 7112
28146/2	7418442	494 ABELS BAY RD	ABELS BAY TAS 7112
28146/3	7418450	498 ABELS BAY RD	ABELS BAY TAS 7112
28146/4	7418469	500 ABELS BAY RD	ABELS BAY TAS 7112
28146/5	7418477	508 ABELS BAY RD	ABELS BAY TAS 7112
28146/6	7418485	510 ABELS BAY RD	ABELS BAY TAS 7112
28146/7	7418493	512 ABELS BAY RD	ABELS BAY TAS 7112
28146/8	7418506	514 ABELS BAY RD	ABELS BAY TAS 7112
28146/11	7418514	ABELS BAY RD	ABELS BAY TAS 7112
28146/13	7418514	ABELS BAY RD	ABELS BAY TAS 7112
28146/10	7418514	ABELS BAY RD	ABELS BAY TAS 7112
28146/12	7418514	ABELS BAY RD	ABELS BAY TAS 7112
37369/2	7511938	462 ABELS BAY RD	ABELS BAY TAS 7112
37369/1	7511946	472 ABELS BAY RD	ABELS BAY TAS 7112
44341/2	7693970	40 WILLS RD	ABELS BAY TAS 7112
44341/3	7693989	46 WILLS RD	ABELS BAY TAS 7112
44341/1	7693997	6 WILLS RD	ABELS BAY TAS 7112
44341/4	7694009	48 WILLS RD	ABELS BAY TAS 7112
48272/1	7830111	466 ABELS BAY RD	ABELS BAY TAS 7112
48181/1	7830138	468 ABELS BAY RD	ABELS BAY TAS 7112
63537/6	9073282	411 ABELS BAY RD	ABELS BAY TAS 7112
63537/5	9073282	411 ABELS BAY RD	ABELS BAY TAS 7112
63537/4	9073282	411 ABELS BAY RD	ABELS BAY TAS 7112
177637/1	9199009	423 ABELS BAY RD	ABELS BAY TAS 7112
175980/9	9960591	Lot 9 ABELS BAY RD	ABELS BAY TAS 7112
175980/10	9960592	Lot 10 ABELS BAY RD	ABELS BAY TAS 7112
175980/11	9960593	205 ABELS BAY RD	ABELS BAY TAS 7112
175980/12	9960594	203 ABELS BAY RD	ABELS BAY TAS 7112
175980/13	9960595	183 ABELS BAY RD	ABELS BAY TAS 7112
175980/14	9960596	Lot 14 ABELS BAY RD	ABELS BAY TAS 7112
175980/15	9960597	Lot 15 ABELS BAY RD	ABELS BAY TAS 7112
109457/4	1477038	462 ESPERANCE COAST RD	BROOKS BAY TAS 7116
109457/5	1477046	458 ESPERANCE COAST RD	BROOKS BAY TAS 7116
109629/1	1493716	307 ESPERANCE COAST RD	BROOKS BAY TAS 7116
125750/1	1753493	EVA GULLY RD	BROOKS BAY TAS 7116
125750/2	1753506	EVA GULLY RD	BROOKS BAY TAS 7116
131668/1	1905899	25 EVA GULLY RD	BROOKS BAY TAS 7116

131668/2	1905901	23 EVA GULLY RD	BROOKS BAY TAS 7116
135836/1	2041092	287 ESPERANCE COAST RD	BROOKS BAY TAS 7116
141531/1	2503744	354 ESPERANCE COAST RD	BROOKS BAY TAS 7116
142280/10	2549398	16 WHITE CLIFFS RD	BROOKS BAY TAS 7116
142096/6	2622903	450 ESPERANCE COAST RD	BROOKS BAY TAS 7116
142096/3	2622946	Lot 3 ESPERANCE COAST RD	BROOKS BAY TAS 7116
149479/1	2754252	415 ESPERANCE COAST RD	BROOKS BAY TAS 7116
149479/2	2754260	425 ESPERANCE COAST RD	BROOKS BAY TAS 7116
156940/9	2959645	18 WHITE CLIFFS RD	BROOKS BAY TAS 7116
157639/2	2986918	364 ESPERANCE COAST RD	BROOKS BAY TAS 7116
157639/1	2986926	23 WHITE CLIFFS RD	BROOKS BAY TAS 7116
157639/4	2986926	23 WHITE CLIFFS RD	BROOKS BAY TAS 7116
159372/1	3031208	Lot 1 ESPERANCE COAST RD	BROOKS BAY TAS 7116
159372/2	3031216	481 ESPERANCE COAST RD	BROOKS BAY TAS 7116
159372/3	3031224	Lot 3 ESPERANCE COAST RD	BROOKS BAY TAS 7116
169211/1	3354795	410 ESPERANCE COAST RD	BROOKS BAY TAS 7116
169211/2	3354808	412 ESPERANCE COAST RD	BROOKS BAY TAS 7116
170686/1	3415017	13 EVA GULLY RD	BROOKS BAY TAS 7116
170686/2	3415025	21 EVA GULLY RD	BROOKS BAY TAS 7116
173372/2	3575205	23A ESPERANCE COAST RD	BROOKS BAY TAS 7116
212860/1	5260151	165 EVA GULLY RD	BROOKS BAY TAS 7116
63264/1	5260557	320 ESPERANCE COAST RD	BROOKS BAY TAS 7116
125750/3	7428819	61 EVA GULLY RD	BROOKS BAY TAS 7116
31370/2	7428827	11 EVA GULLY RD	BROOKS BAY TAS 7116
38182/1	7485207	352 ESPERANCE COAST RD	BROOKS BAY TAS 7116
45391/8	7681777	28 WHITE CLIFFS RD	BROOKS BAY TAS 7116
118988/7	7681785	WHITE CLIFFS RD	BROOKS BAY TAS 7116
118988/6	7681793	WHITE CLIFFS RD	BROOKS BAY TAS 7116
45391/5	7681806	WHITE CLIFFS RD	BROOKS BAY TAS 7116
45391/4	7681814	25 WHITE CLIFFS RD	BROOKS BAY TAS 7116
45391/3	7681822	21 WHITE CLIFFS RD	BROOKS BAY TAS 7116
45391/1	7681830	300 ESPERANCE COAST RD	BROOKS BAY TAS 7116
45391/2	7681849	9 WHITE CLIFFS RD	BROOKS BAY TAS 7116
52146/7	7814840	368 ESPERANCE COAST RD	BROOKS BAY TAS 7116
52146/8	7814859	376 ESPERANCE COAST RD	BROOKS BAY TAS 7116
142096/2	9759764	456 ESPERANCE COAST RD	BROOKS BAY TAS 7116
142096/1	9876175	ESPERANCE COAST RD	BROOKS BAY TAS 7116
113656/1	1564246	332 SCOTTS RD	CAIRNS BAY TAS 7116
126506/1	1756053	65 BARNARD RD	CAIRNS BAY TAS 7116
71188/1	1825469	67 BARNARD RD	CAIRNS BAY TAS 7116
237380/1	1857794	299 SCOTTS RD	CAIRNS BAY TAS 7116
62532/1	1857794	299 SCOTTS RD	CAIRNS BAY TAS 7116
160295/2	3207293	50 PHILLIPS RD	CAIRNS BAY TAS 7116
113657/1	3207293	50 PHILLIPS RD	CAIRNS BAY TAS 7116
160295/1	3207306	318 SCOTTS RD	CAIRNS BAY TAS 7116
165935/1	3248749	390 SCOTTS RD	CAIRNS BAY TAS 7116
165935/2	3248757	388 SCOTTS RD	CAIRNS BAY TAS 7116
166690/3	3288767	248 SCOTTS RD	CAIRNS BAY TAS 7116
148444/1	3375852	69 PILLINGS RD	CAIRNS BAY TAS 7116
166690/1	3375860	53 PILLINGS RD	CAIRNS BAY TAS 7116

166690/2	3375879	7 PILLINGS RD	CAIRNS BAY TAS 7116
166690/4	3375887	Lot 4 PILLINGS RD	CAIRNS BAY TAS 7116
172339/1	5258895	405 SCOTTS RD	CAIRNS BAY TAS 7116
148556/1	5258908	5361 HUON HWY	CAIRNS BAY TAS 7116
148599/1	5258916	5361A HUON HWY	CAIRNS BAY TAS 7116
224433/1	5259791	20 DAWSON RD	CAIRNS BAY TAS 7116
250661/1	5259820	79 BARNARD RD	CAIRNS BAY TAS 7116
10158/1	5259847	53 BARNARD RD	CAIRNS BAY TAS 7116
245507/1	5259855	BARNARD RD	CAIRNS BAY TAS 7116
179847/1	5259855	BARNARD RD	CAIRNS BAY TAS 7116
221263/1	5259863	31 PHILLIPS RD	CAIRNS BAY TAS 7116
6556/1	5259927	59 PILLINGS RD	CAIRNS BAY TAS 7116
130162/1	5259978	PILLINGS RD	CAIRNS BAY TAS 7116
31145/3	5261250	275 SCOTTS RD	CAIRNS BAY TAS 7116
246571/1	5261285	6 PHILLIPS RD	CAIRNS BAY TAS 7116
59559/1	5261306	336 SCOTTS RD	CAIRNS BAY TAS 7116
21884/1	5261314	339 SCOTTS RD	CAIRNS BAY TAS 7116
148554/1	5261322	SCOTTS RD	CAIRNS BAY TAS 7116
237624/1	5261330	385 SCOTTS RD	CAIRNS BAY TAS 7116
26236/1	7142618	82 BARNARD RD	CAIRNS BAY TAS 7116
221199/1	7167057	324 SCOTTS RD	CAIRNS BAY TAS 7116
39951/1	7491498	130 PILLINGS RD	CAIRNS BAY TAS 7116
116234/1	7491498	130 PILLINGS RD	CAIRNS BAY TAS 7116
208467/1	7491498	130 PILLINGS RD	CAIRNS BAY TAS 7116
227864/1	7491498	130 PILLINGS RD	CAIRNS BAY TAS 7116
116233/1	7491498	130 PILLINGS RD	CAIRNS BAY TAS 7116
52374/1	7814808	70 DAWSON RD	CAIRNS BAY TAS 7116
101508/5	7869809	2 BARNARD RD	CAIRNS BAY TAS 7116
102274/1	7869817	16 DAWSON RD	CAIRNS BAY TAS 7116
54044/2	7888110	248 SCOTTS RD	CAIRNS BAY TAS 7116
54044/1	7888129	260 SCOTTS RD	CAIRNS BAY TAS 7116
49397/1	1464050	32 PALMERS RD	CASTLE FORBES BAY TAS 7116
119742/1	1674461	135 CASTLE FORBES RD	CASTLE FORBES BAY TAS 7116
33307/6	1821978	35 MEREDITH ST	CASTLE FORBES BAY TAS 7116
118120/1	1825987	65 FLEURTYS RD	CASTLE FORBES BAY TAS 7116
90774/1	1826015	78 FLEURTYS RD	CASTLE FORBES BAY TAS 7116
33890/1	1853531	CASTLE FORBES RD	CASTLE FORBES BAY TAS 7116
134745/1	2018634	27 KILES RD	CASTLE FORBES BAY TAS 7116
100008/2	2018642	21 KILES RD	CASTLE FORBES BAY TAS 7116
129857/4	2019362	90 FLEURTYS RD	CASTLE FORBES BAY TAS 7116
129853/1	2019397	4034 HUON HWY	CASTLE FORBES BAY TAS 7116
135447/1	2030019	4126 HUON HWY	CASTLE FORBES BAY TAS 7116
135448/2	2030027	HUON HWY	CASTLE FORBES BAY TAS 7116
7401/1	2143013	KILES RD	CASTLE FORBES BAY TAS 7116
16400/1	2143021	14 KILES RD	CASTLE FORBES BAY TAS 7116
140773/2	2197783	38 CASTLE FORBES RD	CASTLE FORBES BAY TAS 7116
140773/1	2197783	38 CASTLE FORBES RD	CASTLE FORBES BAY TAS 7116
120770/1	2197791	70 CASTLE FORBES RD	CASTLE FORBES BAY TAS 7116
9145/4	2201949	2 MEREDITH ST	CASTLE FORBES BAY TAS 7116
118121/1	2210327	48 FLEURTYS RD	CASTLE FORBES BAY TAS 7116

129856/3	2210327	48 FLEURTYS RD	CASTLE FORBES BAY TAS 7116
25110/1	2262661	TRIFFETS LANE	CASTLE FORBES BAY TAS 7116
32048/7	2262784	49 TRIFFETS LANE	CASTLE FORBES BAY TAS 7116
141642/2	2298912	4080 HUON HWY	CASTLE FORBES BAY TAS 7116
141642/3	2298920	20 CROWTHERS RD	CASTLE FORBES BAY TAS 7116
141642/4	2298939	60 CROWTHERS RD	CASTLE FORBES BAY TAS 7116
229458/1	2304710	CASTLE FORBES RD	CASTLE FORBES BAY TAS 7116
215507/1	2506435	460 HARWOODS RD	CASTLE FORBES BAY TAS 7116
240911/1	2609004	Lot 1 HARWOODS RD	CASTLE FORBES BAY TAS 7116
151133/1	2786668	34 FLEURTYS RD	CASTLE FORBES BAY TAS 7116
150983/1	2786676	42 FLEURTYS RD	CASTLE FORBES BAY TAS 7116
151878/1	2855782	4046 HUON HWY	CASTLE FORBES BAY TAS 7116
153857/1	2864822	4060 HUON HWY	CASTLE FORBES BAY TAS 7116
248854/2	2866254	22 CROWTHERS RD	CASTLE FORBES BAY TAS 7116
141642/6	2866254	22 CROWTHERS RD	CASTLE FORBES BAY TAS 7116
141642/5	2866254	22 CROWTHERS RD	CASTLE FORBES BAY TAS 7116
25000/4	2866254	22 CROWTHERS RD	CASTLE FORBES BAY TAS 7116
141642/7	2866254	22 CROWTHERS RD	CASTLE FORBES BAY TAS 7116
141642/8	2866254	22 CROWTHERS RD	CASTLE FORBES BAY TAS 7116
153857/9	2866254	22 CROWTHERS RD	CASTLE FORBES BAY TAS 7116
154922/2	3005413	4015 HUON HWY	CASTLE FORBES BAY TAS 7116
154922/3	3005448	15 MEREDITH ST	CASTLE FORBES BAY TAS 7116
241930/1	3088677	3909 HUON HWY	CASTLE FORBES BAY TAS 7116
46992/1	3088685	Lot 1 HUON HWY	CASTLE FORBES BAY TAS 7116
21464/1	3089389	Lot 1 HUON HWY	CASTLE FORBES BAY TAS 7116
43774/1	3089418	29 FLEURTYS RD	CASTLE FORBES BAY TAS 7116
8973/1	3089426	3885 HUON HWY	CASTLE FORBES BAY TAS 7116
162499/2	3152026	5 MEREDITH ST	CASTLE FORBES BAY TAS 7116
154922/6	3152034	13 MEREDITH ST	CASTLE FORBES BAY TAS 7116
32759/1	3152034	13 MEREDITH ST	CASTLE FORBES BAY TAS 7116
154922/5	3152034	13 MEREDITH ST	CASTLE FORBES BAY TAS 7116
162499/1	3171593	3 MEREDITH ST	CASTLE FORBES BAY TAS 7116
33307/3	3171606	Lot 3 MEREDITH ST	CASTLE FORBES BAY TAS 7116
154922/1	3189865	4013 HUON HWY	CASTLE FORBES BAY TAS 7116
162500/3	3189873	MEREDITH ST	CASTLE FORBES BAY TAS 7116
164813/1	3212658	Lot 1 CASTLE FORBES RD	CASTLE FORBES BAY TAS 7116
167369/1	3287369	479 HARWOODS RD	CASTLE FORBES BAY TAS 7116
134967/1	3311162	Lot 1 HARWOODS RD	CASTLE FORBES BAY TAS 7116
136966/1	3311170	161 CASTLE FORBES RD	CASTLE FORBES BAY TAS 7116
169763/2	3383262	202 CASTLE FORBES RD	CASTLE FORBES BAY TAS 7116
169763/3	3383270	184 CASTLE FORBES RD	CASTLE FORBES BAY TAS 7116
/0	3427915	71 FLEURTYS RD	CASTLE FORBES BAY TAS 7116
118121/2	3427915	71 FLEURTYS RD	CASTLE FORBES BAY TAS 7116
172772/1	3506250	HUON HWY	CASTLE FORBES BAY TAS 7116
172773/1	3506277	4030 HUON HWY	CASTLE FORBES BAY TAS 7116
13859/6	3596241	Lot 6 HARWOODS RD	CASTLE FORBES BAY TAS 7116
167418/1	3596268	493 HARWOODS RD	CASTLE FORBES BAY TAS 7116
247712/1	3596313	462 HARWOODS RD	CASTLE FORBES BAY TAS 7116
248735/1	3596321	Lot 1 HARWOODS RD	CASTLE FORBES BAY TAS 7116
175557/2	3613590	Lot 2 HARWOODS RD	CASTLE FORBES BAY TAS 7116

175557/3	3613590	Lot 2 HARWOODS RD	CASTLE FORBES BAY TAS 7116
175557/1	3616599	610 HARWOODS RD	CASTLE FORBES BAY TAS 7116
17679/1	5249200	15 PALMERS RD	CASTLE FORBES BAY TAS 7116
14578/2	5249489	65 CASTLE FORBES RD	CASTLE FORBES BAY TAS 7116
14578/1	5249489	65 CASTLE FORBES RD	CASTLE FORBES BAY TAS 7116
51735/1	5249497	67 CASTLE FORBES RD	CASTLE FORBES BAY TAS 7116
44365/1	5249518	76 CASTLE FORBES RD	CASTLE FORBES BAY TAS 7116
118799/1	5249526	86 CASTLE FORBES RD	CASTLE FORBES BAY TAS 7116
7692/3	5249534	97 CASTLE FORBES RD	CASTLE FORBES BAY TAS 7116
7692/2	5249542	9 KILES RD	CASTLE FORBES BAY TAS 7116
12587/1	5249550	90 CASTLE FORBES RD	CASTLE FORBES BAY TAS 7116
48624/1	5249569	106 CASTLE FORBES RD	CASTLE FORBES BAY TAS 7116
121882/1	5249593	126 CASTLE FORBES RD	CASTLE FORBES BAY TAS 7116
29846/57	5249606	152 CASTLE FORBES RD	CASTLE FORBES BAY TAS 7116
9146/2	5249622	159 CASTLE FORBES RD	CASTLE FORBES BAY TAS 7116
44098/2	5249649	178 CASTLE FORBES RD	CASTLE FORBES BAY TAS 7116
44098/1	5249649	178 CASTLE FORBES RD	CASTLE FORBES BAY TAS 7116
107398/1	5249673	606 HARWOODS RD	CASTLE FORBES BAY TAS 7116
70281/1	5249681	209 CASTLE FORBES RD	CASTLE FORBES BAY TAS 7116
/0	5249681	209 CASTLE FORBES RD	CASTLE FORBES BAY TAS 7116
23607/1	5249681	209 CASTLE FORBES RD	CASTLE FORBES BAY TAS 7116
/0	5249681	209 CASTLE FORBES RD	CASTLE FORBES BAY TAS 7116
217913/1	5249681	209 CASTLE FORBES RD	CASTLE FORBES BAY TAS 7116
/0	5249681	209 CASTLE FORBES RD	CASTLE FORBES BAY TAS 7116
240797/1	5249702	CASTLE FORBES RD	CASTLE FORBES BAY TAS 7116
201515/1	5249729	HARWOODS RD	CASTLE FORBES BAY TAS 7116
235726/1	5249729	HARWOODS RD	CASTLE FORBES BAY TAS 7116
209061/1	5249729	HARWOODS RD	CASTLE FORBES BAY TAS 7116
209065/1	5249729	HARWOODS RD	CASTLE FORBES BAY TAS 7116
243376/1	5249948	37 CROWTHERS RD	CASTLE FORBES BAY TAS 7116
231884/1	5249956	39 CROWTHERS RD	CASTLE FORBES BAY TAS 7116
6055/1	5249964	90 CROWTHERS RD	CASTLE FORBES BAY TAS 7116
147888/1	5249972	100 CROWTHERS RD	CASTLE FORBES BAY TAS 7116
21959/3	5249980	119 CROWTHERS RD	CASTLE FORBES BAY TAS 7116
32759/4	5251466	23 MEREDITH ST	CASTLE FORBES BAY TAS 7116
235935/1	5251474	27 MEREDITH ST	CASTLE FORBES BAY TAS 7116
132042/1	5251482	33 MEREDITH ST	CASTLE FORBES BAY TAS 7116
134420/1	5251503	4042 HUON HWY	CASTLE FORBES BAY TAS 7116
224311/1	5251562	4059 HUON HWY	CASTLE FORBES BAY TAS 7116
234396/1	5251570	4061 HUON HWY	CASTLE FORBES BAY TAS 7116
30491/1	5251589	4082 HUON HWY	CASTLE FORBES BAY TAS 7116
128508/1	5251618	9 PALMERS RD	CASTLE FORBES BAY TAS 7116
237262/1	5251626	4156 HUON HWY	CASTLE FORBES BAY TAS 7116
243354/1	5708227	3921 HUON HWY	CASTLE FORBES BAY TAS 7116
7692/1	7097394	3 KILES RD	CASTLE FORBES BAY TAS 7116
41457/1	7097407	98 CASTLE FORBES RD	CASTLE FORBES BAY TAS 7116
16233/1	7099525	9 CROWTHERS RD	CASTLE FORBES BAY TAS 7116
14016/1	7142300	34 PALMERS RD	CASTLE FORBES BAY TAS 7116
24896/1	7219953	600 HARWOODS RD	CASTLE FORBES BAY TAS 7116
32048/8	7219996	65 TRIFFETS LANE	CASTLE FORBES BAY TAS 7116

37809/1	7454056	12 FLEURTYS RD	CASTLE FORBES BAY TAS 7116
33637/1	7460632	58 TRIFFETS LANE	CASTLE FORBES BAY TAS 7116
33050/3	7460659	25 TRIFFETS LANE	CASTLE FORBES BAY TAS 7116
31950/1	7518590	168 CASTLE FORBES RD	CASTLE FORBES BAY TAS 7116
31950/2	7518603	172 CASTLE FORBES RD	CASTLE FORBES BAY TAS 7116
9146/5	7633820	155 CASTLE FORBES RD	CASTLE FORBES BAY TAS 7116
9146/1	7633839	157 CASTLE FORBES RD	CASTLE FORBES BAY TAS 7116
228675/1	7672176	3893 HUON HWY	CASTLE FORBES BAY TAS 7116
42954/1	7672176	3893 HUON HWY	CASTLE FORBES BAY TAS 7116
48653/1	7755166	30 PALMERS RD	CASTLE FORBES BAY TAS 7116
100008/1	7869972	23 KILES RD	CASTLE FORBES BAY TAS 7116
180867/1	9027657	Lot 1 HARWOODS RD	CASTLE FORBES BAY TAS 7116
180867/2	9027658	Lot 2 HARWOODS RD	CASTLE FORBES BAY TAS 7116
167418/2	9823142	433 HARWOODS RD	CASTLE FORBES BAY TAS 7116
53182/1	9823142	433 HARWOODS RD	CASTLE FORBES BAY TAS 7116
17121/18	2085204	12 CHARLOTTE COVE RD	CHARLOTTE COVE TAS 7112
15147/17	2085212	10 CHARLOTTE COVE RD	CHARLOTTE COVE TAS 7112
142512/4	2562381	5761 CHANNEL HWY	CHARLOTTE COVE TAS 7112
142512/2	2562402	5759 CHANNEL HWY	CHARLOTTE COVE TAS 7112
17121/29	3230127	34 CHARLOTTE COVE RD	CHARLOTTE COVE TAS 7112
17121/31	3230127	34 CHARLOTTE COVE RD	CHARLOTTE COVE TAS 7112
17121/30	3230127	34 CHARLOTTE COVE RD	CHARLOTTE COVE TAS 7112
7646/3	5859690	5765 CHANNEL HWY	CHARLOTTE COVE TAS 7112
21879/7	5859711	5757 CHANNEL HWY	CHARLOTTE COVE TAS 7112
19501/8	5859738	5755 CHANNEL HWY	CHARLOTTE COVE TAS 7112
19501/9	5859746	5753 CHANNEL HWY	CHARLOTTE COVE TAS 7112
19501/10	5859754	5751 CHANNEL HWY	CHARLOTTE COVE TAS 7112
19501/11	5859762	5749 CHANNEL HWY	CHARLOTTE COVE TAS 7112
19501/12	5859770	5747 CHANNEL HWY	CHARLOTTE COVE TAS 7112
19501/49	5859789	1 CHARLOTTE COVE RD	CHARLOTTE COVE TAS 7112
19501/50	5859797	CHANNEL HWY	CHARLOTTE COVE TAS 7112
19501/51	5859818	5731 CHANNEL HWY	CHARLOTTE COVE TAS 7112
15147/48	5865863	3 CHARLOTTE COVE RD	CHARLOTTE COVE TAS 7112
17121/45	5865900	13 CHARLOTTE COVE RD	CHARLOTTE COVE TAS 7112
17121/44	5865919	15 CHARLOTTE COVE RD	CHARLOTTE COVE TAS 7112
17121/43	5865927	17 CHARLOTTE COVE RD	CHARLOTTE COVE TAS 7112
17121/42	5865935	19 CHARLOTTE COVE RD	CHARLOTTE COVE TAS 7112
17121/41	5865943	21 CHARLOTTE COVE RD	CHARLOTTE COVE TAS 7112
17121/38	5865986	27 CHARLOTTE COVE RD	CHARLOTTE COVE TAS 7112
17121/37	5865994	29 CHARLOTTE COVE RD	CHARLOTTE COVE TAS 7112
17121/36	5866006	31 CHARLOTTE COVE RD	CHARLOTTE COVE TAS 7112
17121/35	5866014	33 CHARLOTTE COVE RD	CHARLOTTE COVE TAS 7112
17121/33	5866030	35 CHARLOTTE COVE RD	CHARLOTTE COVE TAS 7112
17121/34	5866030	35 CHARLOTTE COVE RD	CHARLOTTE COVE TAS 7112
17121/32	5866030	35 CHARLOTTE COVE RD	CHARLOTTE COVE TAS 7112
17121/28	5866081	32 CHARLOTTE COVE RD	CHARLOTTE COVE TAS 7112
17121/27	5866102	30 CHARLOTTE COVE RD	CHARLOTTE COVE TAS 7112
17121/26	5866110	28 CHARLOTTE COVE RD	CHARLOTTE COVE TAS 7112
17121/25	5866129	26 CHARLOTTE COVE RD	CHARLOTTE COVE TAS 7112
17121/24	5866137	24 CHARLOTTE COVE RD	CHARLOTTE COVE TAS 7112

17121/23	5866145	22 CHARLOTTE COVE RD	CHARLOTTE COVE TAS 7112
17121/22	5866153	20 CHARLOTTE COVE RD	CHARLOTTE COVE TAS 7112
17121/21	5866161	18 CHARLOTTE COVE RD	CHARLOTTE COVE TAS 7112
17121/20	5866188	16 CHARLOTTE COVE RD	CHARLOTTE COVE TAS 7112
17121/19	5866196	14 CHARLOTTE COVE RD	CHARLOTTE COVE TAS 7112
15147/53	5866225	8 CHARLOTTE COVE RD	CHARLOTTE COVE TAS 7112
15147/14	5866268	4 CHARLOTTE COVE RD	CHARLOTTE COVE TAS 7112
15147/13	5866276	2 CHARLOTTE COVE RD	CHARLOTTE COVE TAS 7112
17020/1	7137464	9 SCARRS RD	CHARLOTTE COVE TAS 7112
164922/1	7253430	6 CHARLOTTE COVE RD	CHARLOTTE COVE TAS 7112
19510/4	7375489	5769 CHANNEL HWY	CHARLOTTE COVE TAS 7112
19510/3	7375497	5771 CHANNEL HWY	CHARLOTTE COVE TAS 7112
17121/46	7375614	11 CHARLOTTE COVE RD	CHARLOTTE COVE TAS 7112
17121/47	7375622	9 CHARLOTTE COVE RD	CHARLOTTE COVE TAS 7112
17121/40	9354778	25 CHARLOTTE COVE RD	CHARLOTTE COVE TAS 7112
17121/39	9354778	25 CHARLOTTE COVE RD	CHARLOTTE COVE TAS 7112
108451/1	1455509	408 CRABTREE RD	CRABTREE TAS 7109
244598/1	1455517	416 CRABTREE RD	CRABTREE TAS 7109
109363/1	1455568	CRABTREE RD	CRABTREE TAS 7109
103080/2	1486364	11 SHARPES RD	CRABTREE TAS 7109
125085/1	1522193	64 SHARPES RD	CRABTREE TAS 7109
110716/1	1522206	65 SHARPES RD	CRABTREE TAS 7109
110716/3	1522214	75 SHARPES RD	CRABTREE TAS 7109
113138/1	1542282	356 CRABTREE RD	CRABTREE TAS 7109
54446/1	1559180	258 CRABTREE RD	CRABTREE TAS 7109
76339/2	1572449	411 CRABTREE RD	CRABTREE TAS 7109
27881/2	1591367	BLUE HILL RD	CRABTREE TAS 7109
27881/4	1591375	23 BLUE HILL RD	CRABTREE TAS 7109
116826/1	1631138	521 CRABTREE RD	CRABTREE TAS 7109
122351/1	1686147	18 SHARPES RD	CRABTREE TAS 7109
122351/2	1686219	CRABTREE RD	CRABTREE TAS 7109
35870/101	1837371	72 CLEAR VIEW RD	CRABTREE TAS 7109
131185/1	1909734	2 BYGRAVES RD	CRABTREE TAS 7109
34588/1	2122132	71 CLEAR VIEW RD	CRABTREE TAS 7109
138988/1	2186021	125 LIDDELLS RD	CRABTREE TAS 7109
138988/2	2186048	170 LIDDELLS RD	CRABTREE TAS 7109
103532/2	2232366	50 SHARPES RD	CRABTREE TAS 7109
140270/1	2250863	19 STONY POINT TRL	CRABTREE TAS 7109
140270/2	2250871	17 STONY POINT TRL	CRABTREE TAS 7109
115376/2	2264990	CRABTREE RD	CRABTREE TAS 7109
115376/1	2265002	141 BYGRAVES RD	CRABTREE TAS 7109
141291/1	2303849	30 THORPE RD	CRABTREE TAS 7109
141291/2	2303857	57 THORPE RD	CRABTREE TAS 7109
141291/3	2303865	45 THORPE RD	CRABTREE TAS 7109
141129/1	2571544	15 CROSS RD	CRABTREE TAS 7109
142993/1	2591449	294 CRABTREE RD	CRABTREE TAS 7109
142476/1	2613185	10 FRANKLINS RD	CRABTREE TAS 7109
142476/2	2613193	345 CRABTREE RD	CRABTREE TAS 7109
150412/1	2771490	145 CRABTREE RD	CRABTREE TAS 7109
150846/1	2814868	470 CRABTREE RD	CRABTREE TAS 7109

150846/2	2814876	469 CRABTREE RD	CRABTREE TAS 7109
150846/3	2814884	20 BARTELS RD	CRABTREE TAS 7109
26770/1	2821371	233 CRABTREE RD	CRABTREE TAS 7109
149558/1	2836354	4 CROSS RD	CRABTREE TAS 7109
153304/1	2837138	756 CRABTREE RD	CRABTREE TAS 7109
153304/2	2837146	796 CRABTREE RD	CRABTREE TAS 7109
149952/1	2856160	569 CRABTREE RD	CRABTREE TAS 7109
149952/2	2856195	9 LOVELL RD	CRABTREE TAS 7109
234803/1	2873219	CRABTREE RD	CRABTREE TAS 7109
149952/4	2873219	CRABTREE RD	CRABTREE TAS 7109
149952/3	2873219	CRABTREE RD	CRABTREE TAS 7109
154809/2	2898811	289 CRABTREE RD	CRABTREE TAS 7109
156435/1	2951408	238 CLEAR VIEW RD	CRABTREE TAS 7109
156435/3	2951416	212 CLEAR VIEW RD	CRABTREE TAS 7109
212017/1	2980989	CLEAR VIEW RD	CRABTREE TAS 7109
229427/1	2980989	CLEAR VIEW RD	CRABTREE TAS 7109
219148/1	2981017	180 CLEAR VIEW RD	CRABTREE TAS 7109
219154/1	2981017	180 CLEAR VIEW RD	CRABTREE TAS 7109
154424/1	3004218	Lot 1 LIDDELLS RD	CRABTREE TAS 7109
158158/1	3027962	394 CRABTREE RD	CRABTREE TAS 7109
159227/1	3029730	17 CROSS RD	CRABTREE TAS 7109
160081/10	3052973	520 CRABTREE RD	CRABTREE TAS 7109
160430/1	3098306	29 SHARPES RD	CRABTREE TAS 7109
160430/2	3098314	27 SHARPES RD	CRABTREE TAS 7109
162125/1	3138822	54 THORPE RD	CRABTREE TAS 7109
162125/2	3138830	56 THORPE RD	CRABTREE TAS 7109
158114/1	3163040	Lot 1 LIDDELLS RD	CRABTREE TAS 7109
162610/1	3170005	27 ROCKY CREEK RD	CRABTREE TAS 7109
162610/2	3170013	615 CRABTREE RD	CRABTREE TAS 7109
162610/12	3170021	500 CRABTREE RD	CRABTREE TAS 7109
162611/1	3170048	Lot 1 CRABTREE RD	CRABTREE TAS 7109
162610/3	3170056	19 BYGRAVES RD	CRABTREE TAS 7109
162610/4	3170064	Lot 4 BYGRAVES RD	CRABTREE TAS 7109
162610/5	3178859	Lot 5 BYGRAVES RD	CRABTREE TAS 7109
237807/1	3178867	Lot 6 BYGRAVES RD	CRABTREE TAS 7109
162610/6	3178867	Lot 6 BYGRAVES RD	CRABTREE TAS 7109
162610/7	3178875	Lot 7 BYGRAVES RD	CRABTREE TAS 7109
162610/9	3178883	BYGRAVES RD	CRABTREE TAS 7109
237835/1	3178883	BYGRAVES RD	CRABTREE TAS 7109
164361/1	3199019	670 CRABTREE RD	CRABTREE TAS 7109
164986/1	3218216	35 CLEAR VIEW RD	CRABTREE TAS 7109
164987/1	3218224	10 CLEAR VIEW RD	CRABTREE TAS 7109
165611/1	3228836	Lot 1 BYGRAVES RD	CRABTREE TAS 7109
165611/2	3228844	190 BYGRAVES RD	CRABTREE TAS 7109
154809/1	3398085	261 CRABTREE RD	CRABTREE TAS 7109
10950/1	3398085	261 CRABTREE RD	CRABTREE TAS 7109
149952/5	3431252	52 BYGRAVES RD	CRABTREE TAS 7109
245474/1	3431260	Lot 1 BLUE HILL RD	CRABTREE TAS 7109
172017/1	3474746	3 MITCHELLS RD	CRABTREE TAS 7109
171626/2	3494704	48 ROCKY CREEK RD	CRABTREE TAS 7109

157841/1	3501863	Lot 1 LIDDELLS RD	CRABTREE TAS 7109
19554/1	3501863	Lot 1 LIDDELLS RD	CRABTREE TAS 7109
157841/2	3501871	Lot 2 LIDDELLS RD	CRABTREE TAS 7109
174926/1	3501898	Lot 1 ROCKY CREEK RD	CRABTREE TAS 7109
174940/1	3501900	61 LIDDELLS RD	CRABTREE TAS 7109
172017/2	3514840	56 MITCHELLS RD	CRABTREE TAS 7109
172017/3	3514859	725 CRABTREE RD	CRABTREE TAS 7109
201991/1	5686961	140 CLEAR VIEW RD	CRABTREE TAS 7109
203983/1	5686961	140 CLEAR VIEW RD	CRABTREE TAS 7109
203169/1	5686961	140 CLEAR VIEW RD	CRABTREE TAS 7109
220756/1	5689919	20 THORPE RD	CRABTREE TAS 7109
214008/1	5694515	BARTELS RD	CRABTREE TAS 7109
122120/1	5694523	22 FRANKLINS RD	CRABTREE TAS 7109
227089/1	5694865	45 BLUE HILL RD	CRABTREE TAS 7109
234057/1	5694988	BYGRAVES RD	CRABTREE TAS 7109
109123/1	5695016	26 SWANNIE RD	CRABTREE TAS 7109
135798/1	5695032	239 CRABTREE RD	CRABTREE TAS 7109
208498/1	5695040	259 CRABTREE RD	CRABTREE TAS 7109
211783/1	5695059	CRABTREE RD	CRABTREE TAS 7109
129699/3	5695067	69 FRANKLINS RD	CRABTREE TAS 7109
231151/1	5695075	281 CRABTREE RD	CRABTREE TAS 7109
6522/1	5695091	280 CRABTREE RD	CRABTREE TAS 7109
220310/1	5695112	309 CRABTREE RD	CRABTREE TAS 7109
65111/1	5695120	320 CRABTREE RD	CRABTREE TAS 7109
204337/1	5695139	329 CRABTREE RD	CRABTREE TAS 7109
121047/1	5695155	349 CRABTREE RD	CRABTREE TAS 7109
63996/1	5695163	350 CRABTREE RD	CRABTREE TAS 7109
222539/1	5695171	351 CRABTREE RD	CRABTREE TAS 7109
113138/3	5695198	354 CRABTREE RD	CRABTREE TAS 7109
222145/1	5695200	367 CRABTREE RD	CRABTREE TAS 7109
222332/1	5695227	382 CRABTREE RD	CRABTREE TAS 7109
76339/1	5695278	417 CRABTREE RD	CRABTREE TAS 7109
209514/1	5695315	495 CRABTREE RD	CRABTREE TAS 7109
206943/1	5695374	651 CRABTREE RD	CRABTREE TAS 7109
220487/1	5695382	665 CRABTREE RD	CRABTREE TAS 7109
121760/1	5695403	696 CRABTREE RD	CRABTREE TAS 7109
246888/1	5695438	JEFFERYS TRK	CRABTREE TAS 7109
223212/1	5695454	754 CRABTREE RD	CRABTREE TAS 7109
209776/1	5695470	CRABTREE RD	CRABTREE TAS 7109
220700/1	5695470	CRABTREE RD	CRABTREE TAS 7109
109612/1	5695489	CRABTREE RD	CRABTREE TAS 7109
109612/2	5695489	CRABTREE RD	CRABTREE TAS 7109
238742/1	5695518	CRABTREE RD	CRABTREE TAS 7109
120059/1	5695550	CRABTREE RD	CRABTREE TAS 7109
224787/1	5696158	26 ROCKY CREEK RD	CRABTREE TAS 7109
66375/1	5696166	25 ROCKY CREEK RD	CRABTREE TAS 7109
223839/1	5696182	11 LIDDELLS RD	CRABTREE TAS 7109
220965/1	5696844	200 LIDDELLS RD	CRABTREE TAS 7109
105360/1	5697476	28 FRANKLINS RD	CRABTREE TAS 7109
205270/1	5697484	36 FRANKLINS RD	CRABTREE TAS 7109

241266/1	5697492	50 FRANKLINS RD	CRABTREE TAS 7109
129699/1	5697505	58 FRANKLINS RD	CRABTREE TAS 7109
129699/2	5697513	74 FRANKLINS RD	CRABTREE TAS 7109
11898/1	5697521	14 CLEAR VIEW RD	CRABTREE TAS 7109
80718/1	5697556	40 CLEAR VIEW RD	CRABTREE TAS 7109
11972/1	5697564	50 CLEAR VIEW RD	CRABTREE TAS 7109
250686/1	5697572	55 CLEAR VIEW RD	CRABTREE TAS 7109
228864/1	5697599	103 CLEAR VIEW RD	CRABTREE TAS 7109
211393/1	5697601	139 CLEAR VIEW RD	CRABTREE TAS 7109
240064/1	5697636	CLEAR VIEW RD	CRABTREE TAS 7109
205990/1	5697644	28 BULMERS RD	CRABTREE TAS 7109
202100/1	5697644	28 BULMERS RD	CRABTREE TAS 7109
54790/1	5699201	60 CLEAR VIEW RD	CRABTREE TAS 7109
64008/1	5699228	25 THORPE RD	CRABTREE TAS 7109
20381/1	7117586	LIDDELLS RD	CRABTREE TAS 7109
243456/1	7134765	80 SWANNIE RD	CRABTREE TAS 7109
17471/3	7195162	20 CLEAR VIEW RD	CRABTREE TAS 7109
200415/1	7209835	CRABTREE RD	CRABTREE TAS 7109
200416/1	7209835	CRABTREE RD	CRABTREE TAS 7109
211379/1	7220444	21 BARTELS RD	CRABTREE TAS 7109
26687/1	7278371	460 CRABTREE RD	CRABTREE TAS 7109
26947/1	7336375	ROCKY CREEK RD	CRABTREE TAS 7109
138429/1	7384609	379 CRABTREE RD	CRABTREE TAS 7109
28442/1	7384617	366 CRABTREE RD	CRABTREE TAS 7109
249995/1	7384633	424 CRABTREE RD	CRABTREE TAS 7109
250371/1	7416615	71 ROCKY CREEK RD	CRABTREE TAS 7109
31693/1	7437790	445 CRABTREE RD	CRABTREE TAS 7109
31693/2	7437803	429 CRABTREE RD	CRABTREE TAS 7109
31693/3	7437811	19 BARTELS RD	CRABTREE TAS 7109
48016/1	7437846	833 CRABTREE RD	CRABTREE TAS 7109
27162/1	7438005	BYGRAVES RD	CRABTREE TAS 7109
247721/1	7609775	80 MITCHELLS RD	CRABTREE TAS 7109
10922/1	7609783	60 MITCHELLS RD	CRABTREE TAS 7109
40628/1	7661071	383 CRABTREE RD	CRABTREE TAS 7109
50423/1	7716191	210 CLEAR VIEW RD	CRABTREE TAS 7109
49855/1	7716570	10 LOVELL RD	CRABTREE TAS 7109
250019/1	7716589	ROCKY CREEK RD	CRABTREE TAS 7109
49276/3	7757380	8 LOVELL RD	CRABTREE TAS 7109
27881/1	7811041	BLUE HILL RD	CRABTREE TAS 7109
27881/3	7811068	BYGRAVES RD	CRABTREE TAS 7109
54446/2	7811084	230 CRABTREE RD	CRABTREE TAS 7109
56130/2	7814947	UNIT 2 384 CRABTREE RD	CRABTREE TAS 7109
56130/1	7815544	UNIT 1 384 CRABTREE RD	CRABTREE TAS 7109
157468/1	7887687	16 SHARPES RD	CRABTREE TAS 7109
181935/3	9710591	Lot 3 LIDDELLS RD	CRABTREE TAS 7109
181935/1	9710591	Lot 3 LIDDELLS RD	CRABTREE TAS 7109
168351/1	9710591	Lot 3 LIDDELLS RD	CRABTREE TAS 7109
181935/2	9710591	Lot 3 LIDDELLS RD	CRABTREE TAS 7109
158114/3	9710591	Lot 3 LIDDELLS RD	CRABTREE TAS 7109
168351/2	9710592	Lot 2 ROCKY CREEK RD	CRABTREE TAS 7109

252686/2	9710592	Lot 2 ROCKY CREEK RD	CRABTREE TAS 7109
212717/3	1448579	PARK ST	CRADOC TAS 7109
46667/1	1448579	PARK ST	CRADOC TAS 7109
241929/4	1448587	1820 CYGNET COAST RD	CRADOC TAS 7109
51992/2	1448587	1820 CYGNET COAST RD	CRADOC TAS 7109
107430/2	1492422	39 ARMSTRONGS RD	CRADOC TAS 7109
104441/1	1540711	CLARKS RD	CRADOC TAS 7109
125686/1	1574524	2 AUTUMN RD	CRADOC TAS 7109
50252/1	1623218	3 GARTHS RD	CRADOC TAS 7109
118197/1	1645855	1706 CYGNET COAST RD	CRADOC TAS 7109
118197/2	1645863	1712 CYGNET COAST RD	CRADOC TAS 7109
118197/6	1645871	1714 CYGNET COAST RD	CRADOC TAS 7109
118197/3	1645898	1682A CYGNET COAST RD	CRADOC TAS 7109
118197/4	1645900	1682 CYGNET COAST RD	CRADOC TAS 7109
47273/1	1649303	1804 CYGNET COAST RD	CRADOC TAS 7109
36629/1	1849129	56 PARK ST	CRADOC TAS 7109
129932/1	1868426	71 HARRISONS RD	CRADOC TAS 7109
130892/6	1885509	48 KELLYS RD	CRADOC TAS 7109
130893/2	1885517	2 KELLYS RD	CRADOC TAS 7109
131286/1	1897710	8251 CHANNEL HWY	CRADOC TAS 7109
131487/1	1952329	95 SANDHILL RD	CRADOC TAS 7109
131487/2	1952337	113 SANDHILL RD	CRADOC TAS 7109
133187/2	1953401	92 CRADOC HILL RD	CRADOC TAS 7109
133187/1	1953428	90 CRADOC HILL RD	CRADOC TAS 7109
133624/1	1984793	8391 CHANNEL HWY	CRADOC TAS 7109
133403/1	1984806	8377 CHANNEL HWY	CRADOC TAS 7109
114690/1	1992574	CHANNEL HWY	CRADOC TAS 7109
209416/1	2040719	155 COWMEADOWS RD	CRADOC TAS 7109
135917/1	2071857	12 SLATERS RD	CRADOC TAS 7109
210089/1	2083786	CRADOC HILL RD	CRADOC TAS 7109
138476/1	2163030	1686 CYGNET COAST RD	CRADOC TAS 7109
138476/2	2163049	1684 CYGNET COAST RD	CRADOC TAS 7109
250521/1	2170679	241 CRADOC HILL RD	CRADOC TAS 7109
139474/1	2209684	1889 CYGNET COAST RD	CRADOC TAS 7109
139173/1	2210386	78 REIDS RD	CRADOC TAS 7109
140186/2	2250919	8243-8247 CHANNEL HWY	CRADOC TAS 7109
140072/3	2250994	79 WELLINGS RD	CRADOC TAS 7109
229153/1	2268879	175 CRADOC HILL RD	CRADOC TAS 7109
211043/1	2549101	64 REIDS RD	CRADOC TAS 7109
139173/2	2549101	64 REIDS RD	CRADOC TAS 7109
142989/1	2634015	4 SLATERS RD	CRADOC TAS 7109
142989/2	2634023	8121 CHANNEL HWY	CRADOC TAS 7109
143303/1	2652029	1854 CYGNET COAST RD	CRADOC TAS 7109
143303/2	2652037	1848 CYGNET COAST RD	CRADOC TAS 7109
143041/1	2656855	8273 CHANNEL HWY	CRADOC TAS 7109
115817/1	2656871	63 ROWES RD	CRADOC TAS 7109
143041/2	2656898	Lot 2 ROWES RD	CRADOC TAS 7109
125575/1	2749859	39 KELLYS RD	CRADOC TAS 7109
125576/1	2749867	41 KELLYS RD	CRADOC TAS 7109
149629/1	2765250	75 TURNERS RD	CRADOC TAS 7109

149259/1	2769585	10 HARRISONS RD	CRADOC TAS 7109
140072/2	2824257	80 WELLINGS RD	CRADOC TAS 7109
140072/1	2824257	80 WELLINGS RD	CRADOC TAS 7109
153033/1	2835247	1894 CYGNET COAST RD	CRADOC TAS 7109
153033/2	2835255	16 TURNERS RD	CRADOC TAS 7109
153666/2	2846990	40 HARRISONS RD	CRADOC TAS 7109
154013/1	2869850	8241 CHANNEL HWY	CRADOC TAS 7109
154013/2	2869885	8239 CHANNEL HWY	CRADOC TAS 7109
154013/3	2869893	8237 CHANNEL HWY	CRADOC TAS 7109
153256/1	2869914	1728 CYGNET COAST RD	CRADOC TAS 7109
154428/1	2891708	41 CEMETERY RD	CRADOC TAS 7109
157755/1	2997609	413 CRADOC HILL RD	CRADOC TAS 7109
122569/1	3004736	Lot 1 CRADOC HILL RD	CRADOC TAS 7109
117131/2	3004736	Lot 1 CRADOC HILL RD	CRADOC TAS 7109
72/8479	3004736	Lot 1 CRADOC HILL RD	CRADOC TAS 7109
250002/1	3004736	Lot 1 CRADOC HILL RD	CRADOC TAS 7109
72/8479	3004736	Lot 1 CRADOC HILL RD	CRADOC TAS 7109
72/8479	3004736	Lot 1 CRADOC HILL RD	CRADOC TAS 7109
230756/1	3004736	Lot 1 CRADOC HILL RD	CRADOC TAS 7109
220640/1	3004736	Lot 1 CRADOC HILL RD	CRADOC TAS 7109
221411/1	3004736	Lot 1 CRADOC HILL RD	CRADOC TAS 7109
136969/1	3004736	Lot 1 CRADOC HILL RD	CRADOC TAS 7109
117130/6	3004736	Lot 1 CRADOC HILL RD	CRADOC TAS 7109
117130/1	3004736	Lot 1 CRADOC HILL RD	CRADOC TAS 7109
157755/2	3004736	Lot 1 CRADOC HILL RD	CRADOC TAS 7109
117131/31	3004736	Lot 1 CRADOC HILL RD	CRADOC TAS 7109
72/8479	3004736	Lot 1 CRADOC HILL RD	CRADOC TAS 7109
72/8479	3004736	Lot 1 CRADOC HILL RD	CRADOC TAS 7109
211472/1	3004736	Lot 1 CRADOC HILL RD	CRADOC TAS 7109
117131/33	3004736	Lot 1 CRADOC HILL RD	CRADOC TAS 7109
72/8479	3004736	Lot 1 CRADOC HILL RD	CRADOC TAS 7109
72/8479	3004736	Lot 1 CRADOC HILL RD	CRADOC TAS 7109
72/8479	3004736	Lot 1 CRADOC HILL RD	CRADOC TAS 7109
199117/1	3004736	Lot 1 CRADOC HILL RD	CRADOC TAS 7109
72/8479	3004736	Lot 1 CRADOC HILL RD	CRADOC TAS 7109
72/8479	3004736	Lot 1 CRADOC HILL RD	CRADOC TAS 7109
214283/1	3004736	Lot 1 CRADOC HILL RD	CRADOC TAS 7109
209779/1	3004736	Lot 1 CRADOC HILL RD	CRADOC TAS 7109
237367/1	3004736	Lot 1 CRADOC HILL RD	CRADOC TAS 7109
117132/4	3004736	Lot 1 CRADOC HILL RD	CRADOC TAS 7109
31149/1	3004736	Lot 1 CRADOC HILL RD	CRADOC TAS 7109
72/8479	3004736	Lot 1 CRADOC HILL RD	CRADOC TAS 7109
72/8479	3004736	Lot 1 CRADOC HILL RD	CRADOC TAS 7109
72/8479	3004736	Lot 1 CRADOC HILL RD	CRADOC TAS 7109
72/8479	3004736	Lot 1 CRADOC HILL RD	CRADOC TAS 7109
72/8479	3004736	Lot 1 CRADOC HILL RD	CRADOC TAS 7109
117131/32	3004736	Lot 1 CRADOC HILL RD	CRADOC TAS 7109
201064/1	3004736	Lot 1 CRADOC HILL RD	CRADOC TAS 7109
241197/1	3004736	Lot 1 CRADOC HILL RD	CRADOC TAS 7109
250002/2	3004736	Lot 1 CRADOC HILL RD	CRADOC TAS 7109
72/8479	3004736	Lot 1 CRADOC HILL RD	CRADOC TAS 7109

225806/1	3004736	Lot 1 CRADOC HILL RD	CRADOC TAS 7109
250002/3	3004736	Lot 1 CRADOC HILL RD	CRADOC TAS 7109
72/8479	3004736	Lot 1 CRADOC HILL RD	CRADOC TAS 7109
72/8479	3004736	Lot 1 CRADOC HILL RD	CRADOC TAS 7109
158854/1	3014299	11 TURNERS RD	CRADOC TAS 7109
158854/2	3014301	17 ARMSTRONGS RD	CRADOC TAS 7109
104435/1	3021755	58 CLARKS RD	CRADOC TAS 7109
104442/1	3021763	66 CLARKS RD	CRADOC TAS 7109
158415/1	3044471	8331 CHANNEL HWY	CRADOC TAS 7109
135026/1	3052770	Lot 1 TURNERS RD	CRADOC TAS 7109
160222/1	3052770	Lot 1 TURNERS RD	CRADOC TAS 7109
149629/2	3052770	Lot 1 TURNERS RD	CRADOC TAS 7109
160222/2	3052818	102 ARMSTRONGS RD	CRADOC TAS 7109
160800/1	3118741	1652 CYGNET COAST RD	CRADOC TAS 7109
160800/2	3118768	1656 CYGNET COAST RD	CRADOC TAS 7109
160800/3	3118776	1654 CYGNET COAST RD	CRADOC TAS 7109
160800/4	3118784	1650 CYGNET COAST RD	CRADOC TAS 7109
46807/1	3138507	Lot 1 CHANNEL HWY	CRADOC TAS 7109
47130/1	3138515	8420 CHANNEL HWY	CRADOC TAS 7109
163072/2	3156772	8480 CHANNEL HWY	CRADOC TAS 7109
163072/3	3156780	Lot 3 CHANNEL HWY	CRADOC TAS 7109
163406/2	3156852	1746 CYGNET COAST RD	CRADOC TAS 7109
163407/1	3156860	Lot 1 CYGNET COAST RD	CRADOC TAS 7109
161082/1	3177784	31 SANDHILL RD	CRADOC TAS 7109
163240/1	3189697	20 SANDHILL RD	CRADOC TAS 7109
163240/4	3189734	149 SANDHILL RD	CRADOC TAS 7109
163240/5	3189742	153 SANDHILL RD	CRADOC TAS 7109
165032/1	3229767	65 ARMSTRONGS RD	CRADOC TAS 7109
164960/1	3260238	8306 CHANNEL HWY	CRADOC TAS 7109
166954/1	3266867	100 CRADOC HILL RD	CRADOC TAS 7109
166954/2	3266875	53 CEMETERY RD	CRADOC TAS 7109
167500/2	3287318	8369 CHANNEL HWY	CRADOC TAS 7109
167500/1	3287326	8367 CHANNEL HWY	CRADOC TAS 7109
167704/1	3312114	8464 CHANNEL HWY	CRADOC TAS 7109
168389/2	3328263	Lot 2 CRADOC HILL RD	CRADOC TAS 7109
168389/3	3328271	4 CRADOC HILL RD	CRADOC TAS 7109
168389/4	3328298	13 BENNETTS RD	CRADOC TAS 7109
170194/2	3402814	8171 CHANNEL HWY	CRADOC TAS 7109
170194/1	3402822	8173 CHANNEL HWY	CRADOC TAS 7109
171691/1	3572135	7891 CHANNEL HWY	CRADOC TAS 7109
174357/1	3572143	Lot 1 SANDHILL RD	CRADOC TAS 7109
174791/1	3584830	11 PORTA DR	CRADOC TAS 7109
174791/9	3584849	26 PORTA DR	CRADOC TAS 7109
175500/2	3606075	23 PORTA DR	CRADOC TAS 7109
176700/3	3606083	39 PORTA DR	CRADOC TAS 7109
175500/8	3606091	40 PORTA DR	CRADOC TAS 7109
243859/1	5853862	31 CEMETERY RD	CRADOC TAS 7109
231539/1	5853870	50 CEMETERY RD	CRADOC TAS 7109
14500/1	5853897	53 WELLINGS RD	CRADOC TAS 7109
234647/1	5854021	56 COWMEADOWS RD	CRADOC TAS 7109

206122/1	5854021	56 COWMEADOWS RD	CRADOC TAS 7109
234648/1	5854048	COWMEADOWS RD	CRADOC TAS 7109
64705/1	5854726	7919 CHANNEL HWY	CRADOC TAS 7109
125212/1	5854742	7937 CHANNEL HWY	CRADOC TAS 7109
206515/1	5854742	7937 CHANNEL HWY	CRADOC TAS 7109
13055/4	5854750	7941 CHANNEL HWY	CRADOC TAS 7109
14370/1	5854806	41 AUTUMN RD	CRADOC TAS 7109
14370/2	5854814	53 AUTUMN RD	CRADOC TAS 7109
14370/3	5854822	55 AUTUMN RD	CRADOC TAS 7109
14370/4	5854830	52 AUTUMN RD	CRADOC TAS 7109
125685/1	5854849	8010 CHANNEL HWY	CRADOC TAS 7109
125689/1	5854873	8070 CHANNEL HWY	CRADOC TAS 7109
237407/1	5854902	SLATERS RD	CRADOC TAS 7109
10056/1	5854937	47 SLATERS RD	CRADOC TAS 7109
125503/1	5854945	3 SLATERS RD	CRADOC TAS 7109
125511/1	5854953	30 COWMEADOWS RD	CRADOC TAS 7109
125571/1	5854961	28 COWMEADOWS RD	CRADOC TAS 7109
61828/1	5855016	8223 CHANNEL HWY	CRADOC TAS 7109
72743/1	5855024	CHANNEL HWY	CRADOC TAS 7109
144629/2	5855024	CHANNEL HWY	CRADOC TAS 7109
144629/1	5855024	CHANNEL HWY	CRADOC TAS 7109
114702/2	5855067	8250 CHANNEL HWY	CRADOC TAS 7109
119611/1	5855075	8252 CHANNEL HWY	CRADOC TAS 7109
215856/1	5855083	8254 CHANNEL HWY	CRADOC TAS 7109
227253/1	5855083	8254 CHANNEL HWY	CRADOC TAS 7109
197409/1	5855091	8257 CHANNEL HWY	CRADOC TAS 7109
197408/1	5855104	8267 CHANNEL HWY	CRADOC TAS 7109
202754/1	5855112	8269 CHANNEL HWY	CRADOC TAS 7109
63965/1	5855120	8271 CHANNEL HWY	CRADOC TAS 7109
205240/1	5855147	8296 CHANNEL HWY	CRADOC TAS 7109
114695/2	5855200	8349 CHANNEL HWY	CRADOC TAS 7109
114700/1	5855219	29 CRADOC HILL RD	CRADOC TAS 7109
114699/3	5855227	8359 CHANNEL HWY	CRADOC TAS 7109
24476/1	5855294	8424 CHANNEL HWY	CRADOC TAS 7109
149034/1	5855307	8432 CHANNEL HWY	CRADOC TAS 7109
38139/1	5855315	8434 CHANNEL HWY	CRADOC TAS 7109
114683/1	5855331	8495 CHANNEL HWY	CRADOC TAS 7109
198038/1	5855358	54 CHERRYS RD	CRADOC TAS 7109
28413/1	5855366	67 CRADOC HILL RD	CRADOC TAS 7109
233545/1	5855374	69 CRADOC HILL RD	CRADOC TAS 7109
6532/1	5855390	16 CLARKS RD	CRADOC TAS 7109
6307/1	5855403	40 CLARKS RD	CRADOC TAS 7109
197789/1	5855438	90 CLARKS RD	CRADOC TAS 7109
116040/1	5855446	68 CLARKS RD	CRADOC TAS 7109
85955/1	5855489	108 CRADOC HILL RD	CRADOC TAS 7109
203180/1	5855497	110 CRADOC HILL RD	CRADOC TAS 7109
30352/1	5855526	208 CRADOC HILL RD	CRADOC TAS 7109
10238/1	5855534	239 CRADOC HILL RD	CRADOC TAS 7109
239156/1	5856107	GARTHS RD	CRADOC TAS 7109
226714/1	5856115	70 GARTHS RD	CRADOC TAS 7109

131125/1	5856123	KELLYS RD	CRADOC TAS 7109
20683/1	5856158	161 KELLYS RD	CRADOC TAS 7109
239950/1	5856158	161 KELLYS RD	CRADOC TAS 7109
122569/2	5856166	148 KELLYS RD	CRADOC TAS 7109
26679/1	5856174	KELLYS RD	CRADOC TAS 7109
15679/1	5856238	50 HARRISONS RD	CRADOC TAS 7109
7103/1	5856270	77 ROWES RD	CRADOC TAS 7109
11434/4	5856289	42 SANDHILL RD	CRADOC TAS 7109
11434/3	5856297	50 SANDHILL RD	CRADOC TAS 7109
11434/2	5856318	SANDHILL RD	CRADOC TAS 7109
11434/1	5856326	59 SANDHILL RD	CRADOC TAS 7109
11464/1	5856334	85 SANDHILL RD	CRADOC TAS 7109
201770/1	5857011	1946 CYGNET COAST RD	CRADOC TAS 7109
10341/1	5857062	47 ARMSTRONGS RD	CRADOC TAS 7109
9337/1	5857089	54 TURNERS RD	CRADOC TAS 7109
237651/1	5857118	100 TURNERS RD	CRADOC TAS 7109
227566/1	5857142	1858 CYGNET COAST RD	CRADOC TAS 7109
209116/1	5857214	CYGNET COAST RD	CRADOC TAS 7109
14370/5	5868765	42 AUTUMN RD	CRADOC TAS 7109
14370/6	5868773	24 AUTUMN RD	CRADOC TAS 7109
14370/7	5868781	20 AUTUMN RD	CRADOC TAS 7109
20752/1	7126095	21 CEMETERY RD	CRADOC TAS 7109
20614/7	7126116	68 KELLYS RD	CRADOC TAS 7109
250702/2	7126140	1794 CYGNET COAST RD	CRADOC TAS 7109
125574/1	7133308	37 KELLYS RD	CRADOC TAS 7109
107430/1	7147400	19 ARMSTRONGS RD	CRADOC TAS 7109
25652/1	7159698	1823 CYGNET COAST RD	CRADOC TAS 7109
235177/1	7159700	69 PARK ST	CRADOC TAS 7109
15843/1	7159735	142 CRADOC HILL RD	CRADOC TAS 7109
125573/1	7177693	CHANNEL HWY	CRADOC TAS 7109
125578/1	7202940	7930 CHANNEL HWY	CRADOC TAS 7109
125577/1	7202959	7931 CHANNEL HWY	CRADOC TAS 7109
25978/1	7218184	80 SANDHILL RD	CRADOC TAS 7109
25978/10	7218192	1 DUGGANS RD	CRADOC TAS 7109
25978/11	7218205	41 DUGGANS RD	CRADOC TAS 7109
25978/2	7218213	43 DUGGANS RD	CRADOC TAS 7109
25978/3	7218221	45 DUGGANS RD	CRADOC TAS 7109
25978/4	7218248	49 DUGGANS RD	CRADOC TAS 7109
25978/5	7218256	59 DUGGANS RD	CRADOC TAS 7109
25978/6	7218264	50 DUGGANS RD	CRADOC TAS 7109
25978/7	7218272	26 DUGGANS RD	CRADOC TAS 7109
25978/8	7218280	24 DUGGANS RD	CRADOC TAS 7109
25978/9	7218299	6 DUGGANS RD	CRADOC TAS 7109
200262/1	7243961	11 CLARKS RD	CRADOC TAS 7109
199967/1	7243988	CLARKS RD	CRADOC TAS 7109
199968/1	7243996	77 CLARKS RD	CRADOC TAS 7109
107375/1	7262820	8020 CHANNEL HWY	CRADOC TAS 7109
26283/1	7262839	CHANNEL HWY	CRADOC TAS 7109
114681/1	7313210	20 FERRY RD	CRADOC TAS 7109
28992/1	7317326	43 SLATERS RD	CRADOC TAS 7109

28992/4	7317334	25 SLATERS RD	CRADOC TAS 7109
28854/1	7317350	72 REIDS RD	CRADOC TAS 7109
28222/1	7317369	1790 CYGNET COAST RD	CRADOC TAS 7109
245457/1	7317377	1748 CYGNET COAST RD	CRADOC TAS 7109
27935/1	7317385	139 CRADOC HILL RD	CRADOC TAS 7109
28844/8	7375681	12 GRACES RD	CRADOC TAS 7109
106086/1	7419082	69 HARRISONS RD	CRADOC TAS 7109
9997/1	7419103	1955 CYGNET COAST RD	CRADOC TAS 7109
28843/5	7434987	93 SANDHILL RD	CRADOC TAS 7109
34246/1	7475447	18 CEMETERY RD	CRADOC TAS 7109
34737/1	7475455	46 CEMETERY RD	CRADOC TAS 7109
27935/2	7475535	141 CRADOC HILL RD	CRADOC TAS 7109
27935/3	7475543	151 CRADOC HILL RD	CRADOC TAS 7109
125580/1	7475551	6 SANDHILL RD	CRADOC TAS 7109
32465/1	7475578	9 AUTUMN CR	CRADOC TAS 7109
32465/2	7475586	19 AUTUMN CR	CRADOC TAS 7109
32465/3	7475594	21 AUTUMN CR	CRADOC TAS 7109
32465/4	7475607	23 AUTUMN CR	CRADOC TAS 7109
32465/5	7475615	22 AUTUMN CR	CRADOC TAS 7109
32465/6	7475623	20 AUTUMN CR	CRADOC TAS 7109
33285/1	7511583	128 KELLYS RD	CRADOC TAS 7109
41228/1	7511591	38 GARTHS RD	CRADOC TAS 7109
36813/3	7511735	8205 CHANNEL HWY	CRADOC TAS 7109
125514/1	7511743	CHANNEL HWY	CRADOC TAS 7109
34598/1	7511743	CHANNEL HWY	CRADOC TAS 7109
137754/1	7511743	CHANNEL HWY	CRADOC TAS 7109
137754/2	7511743	CHANNEL HWY	CRADOC TAS 7109
233330/1	7511743	CHANNEL HWY	CRADOC TAS 7109
28843/1	7537003	84 SANDHILL RD	CRADOC TAS 7109
39316/1	7579422	52 REIDS RD	CRADOC TAS 7109
38891/1	7579430	19 REIDS RD	CRADOC TAS 7109
38891/2	7579449	39 REIDS RD	CRADOC TAS 7109
38891/3	7579457	47 REIDS RD	CRADOC TAS 7109
40283/1	7630021	13 SCHULTZ RD	CRADOC TAS 7109
39067/1	7630048	10 SCHULTZ RD	CRADOC TAS 7109
31543/1	7645215	108 KELLYS RD	CRADOC TAS 7109
245512/1	7645223	KELLYS RD	CRADOC TAS 7109
36906/4	7668900	80 REIDS RD	CRADOC TAS 7109
47781/1	7668943	7943 CHANNEL HWY	CRADOC TAS 7109
28843/3	7669030	108 SANDHILL RD	CRADOC TAS 7109
28843/2	7669049	100 SANDHILL RD	CRADOC TAS 7109
235174/1	7686025	1944 CYGNET COAST RD	CRADOC TAS 7109
44428/1	7686033	11 REIDS RD	CRADOC TAS 7109
46667/5	7686068	1907 CYGNET COAST RD	CRADOC TAS 7109
208982/1	7686084	1849 CYGNET COAST RD	CRADOC TAS 7109
46667/3	7694092	CYGNET COAST RD	CRADOC TAS 7109
46667/2	7694105	CYGNET COAST RD	CRADOC TAS 7109
114699/4	7734891	8366 CHANNEL HWY	CRADOC TAS 7109
209278/1	7734955	83 CLARKS RD	CRADOC TAS 7109
248924/1	7734963	80 CLARKS RD	CRADOC TAS 7109

248924/2	7734963	80 CLARKS RD	CRADOC TAS 7109
51992/1	7735018	1830 CYGNET COAST RD	CRADOC TAS 7109
125518/3	7735069	CHANNEL HWY	CRADOC TAS 7109
125518/2	7735077	CHANNEL HWY	CRADOC TAS 7109
125518/1	7735085	7910 CHANNEL HWY	CRADOC TAS 7109
50174/1	7767394	132 SANDHILL RD	CRADOC TAS 7109
50011/1	7767407	130 SANDHILL RD	CRADOC TAS 7109
50011/3	7767423	115 SANDHILL RD	CRADOC TAS 7109
50011/4	7767431	117 SANDHILL RD	CRADOC TAS 7109
47388/1	7767474	1802 CYGNET COAST RD	CRADOC TAS 7109
125581/1	7818155	KELLYS RD	CRADOC TAS 7109
180055/1	9288993	60 HARRISONS RD	CRADOC TAS 7109
178305/2	9516093	19 ROWES RD	CRADOC TAS 7109
176700/4	9568835	41 PORTA DR	CRADOC TAS 7109
176700/5	9568836	45 PORTA DR	CRADOC TAS 7109
176700/6	9568837	46 PORTA DR	CRADOC TAS 7109
176700/7	9568838	44 PORTA DR	CRADOC TAS 7109
179668/1	9650819	Lot 1 CHANNEL HWY	CRADOC TAS 7109
178305/1	9683625	3 ROWES RD	CRADOC TAS 7109
179667/1	9815691	50 SLATERS RD	CRADOC TAS 7109
176700/10	9958033	111 TURNERS RD	CRADOC TAS 7109
101211/1	1427823	28 WINNS RD	CYGNET TAS 7112
108064/1	1437028	10 SILVER HILL RD	CYGNET TAS 7112
108064/2	1437036	8 SILVER HILL RD	CYGNET TAS 7112
38224/1	1440956	31 GUYS RD	CYGNET TAS 7112
106084/1	1442820	81 CONNORS RD	CYGNET TAS 7112
106084/2	1442839	85 CONNORS RD	CYGNET TAS 7112
106084/4	1442855	109 CONNORS RD	CYGNET TAS 7112
54043/2	1448624	74 GEARDS RD	CYGNET TAS 7112
57095/8	1468254	UNIT 8 5 LOUISA ST	CYGNET TAS 7112
36154/1	1492342	8 WINNS RD	CYGNET TAS 7112
102760/1	1492430	WOODCOCK RD	CYGNET TAS 7112
37879/1	1492502	34 GOLDEN VALLEY RD	CYGNET TAS 7112
242530/1	1508033	160 GUYS RD	CYGNET TAS 7112
45482/1	1508287	DANCES RD	CYGNET TAS 7112
117499/3	1511224	18 SILVER HILL RD	CYGNET TAS 7112
112587/2	1525781	11 FITZPATRICK ST	CYGNET TAS 7112
129170/1	1530150	12 CONSTANCE RD	CYGNET TAS 7112
102249/2	1541298	6 DANCES RD	CYGNET TAS 7112
113349/1	1551509	12 GARTHFIELD AV	CYGNET TAS 7112
113349/2	1551517	10 GARTHFIELD AV	CYGNET TAS 7112
120252/1	1552368	WATTLE GROVE RD	CYGNET TAS 7112
113654/1	1554259	220 JETTY RD	CYGNET TAS 7112
108971/1	1578883	2 THORP ST	CYGNET TAS 7112
121852/1	1589697	15 DANCES RD N	CYGNET TAS 7112
121852/3	1589726	7609 CHANNEL HWY	CYGNET TAS 7112
107809/1	1600083	30 THORP ST	CYGNET TAS 7112
116824/1	1602708	1 GEARDS RD	CYGNET TAS 7112
116824/2	1602716	43 GEARDS RD	CYGNET TAS 7112
115921/1	1602804	14 GARTHFIELD AV	CYGNET TAS 7112

115921/2	1602812	48 GARTHFIELD AV	CYGNET TAS 7112
109169/3	1603583	UNIT 3 12 THORP ST	CYGNET TAS 7112
113575/1	1621431	39 ESPLANADE RD	CYGNET TAS 7112
113575/2	1621458	41 ESPLANADE RD	CYGNET TAS 7112
113575/3	1621466	43 ESPLANADE RD	CYGNET TAS 7112
126397/1	1621474	45 ESPLANADE RD	CYGNET TAS 7112
117499/2	1634902	9 DANCES RD	CYGNET TAS 7112
106267/1	1637142	13 FREDERICK ST	CYGNET TAS 7112
106267/2	1637150	11 FREDERICK ST	CYGNET TAS 7112
117565/3	1645839	71 MARY ST	CYGNET TAS 7112
109169/1	1652721	UNIT 1 12 THORP ST	CYGNET TAS 7112
94281/1	1658058	30 CHRISTINA ST	CYGNET TAS 7112
120001/1	1667915	40 JETTY RD	CYGNET TAS 7112
178722/2	1668547	8 FREDERICK ST	CYGNET TAS 7112
178722/3	1668547	8 FREDERICK ST	CYGNET TAS 7112
178722/1	1668547	8 FREDERICK ST	CYGNET TAS 7112
113173/8	1673215	35 THORP ST	CYGNET TAS 7112
113173/9	1673223	33 THORP ST	CYGNET TAS 7112
113173/10	1673231	31 THORP ST	CYGNET TAS 7112
113173/11	1673258	29 THORP ST	CYGNET TAS 7112
113173/12	1673266	27 THORP ST	CYGNET TAS 7112
122510/1	1681100	16 THORP ST	CYGNET TAS 7112
122510/2	1681119	18 THORP ST	CYGNET TAS 7112
238321/1	1698295	398 SILVER HILL RD	CYGNET TAS 7112
202554/1	1736490	WYLIES RD	CYGNET TAS 7112
238318/1	1736503	WYLIES RD	CYGNET TAS 7112
124095/1	1739800	27 ESPLANADE RD	CYGNET TAS 7112
125766/2	1744837	30A WINNS RD	CYGNET TAS 7112
125766/4	1744845	30 WINNS RD	CYGNET TAS 7112
127562/2	1790040	17 KINGS HILL RD	CYGNET TAS 7112
127877/1	1800165	13 JETTY RD	CYGNET TAS 7112
169356/4	1830655	7747 CHANNEL HWY	CYGNET TAS 7112
109169/4	1837451	UNIT 4 12 THORP ST	CYGNET TAS 7112
109169/2	1837478	UNIT 2 12 THORP ST	CYGNET TAS 7112
129681/1	1844950	19 CHARLES ST	CYGNET TAS 7112
129681/2	1844969	19A CHARLES ST	CYGNET TAS 7112
17778/1	1846593	39 SLAB RD	CYGNET TAS 7112
129205/2	1846606	56 SLAB RD	CYGNET TAS 7112
129205/1	1846614	34 SLAB RD	CYGNET TAS 7112
104864/1	1853566	MARY ST	CYGNET TAS 7112
109169/5	1860782	UNIT 5 12 THORP ST	CYGNET TAS 7112
128974/1	1874885	20 WINNS RD	CYGNET TAS 7112
128974/2	1874893	18 WINNS RD	CYGNET TAS 7112
130567/1	1874957	7386 CHANNEL HWY	CYGNET TAS 7112
130567/2	1874965	7384 CHANNEL HWY	CYGNET TAS 7112
135985/3	1879440	50 CONNORS RD	CYGNET TAS 7112
130911/1	1882973	229 WATTLE GROVE RD	CYGNET TAS 7112
130911/2	1882981	231 WATTLE GROVE RD	CYGNET TAS 7112
52383/1	1890383	RIFLE RANGE RD	CYGNET TAS 7112
29727/2	1929380	GOLDEN VALLEY RD	CYGNET TAS 7112



From: "Janet McGlynn" <Janet.McGlynn@wfi.com.au>
Sent: Mon, 2 May 2022 17:04:21 +1000
To: "hvc@huonvalley.tas.gov.au" <hvc@huonvalley.tas.gov.au>
Cc: "Michael McGlynn" <mike.mcglynn@allportsltd.com>
Subject: Channel Highway Land Capability Report
Attachments: Channel Highway Land Capability Report.pdf

For the attention of The General Manager Huon Valley Council

Representation for Mr Michael McGlynn & Mrs Janet McGlynn
Phone number - 0448201452 (Michael), 0410999967 (Janet)
E mail mike.mcglynn@allportsltd.com or janetgy@hotmail.com

PID 2247277

Parcel Address 8520 Channel Highway Woodstock

CT 139543/4

Area 88471 76

Please find attached land capability report to support our request to have our land changed back to Rural.

Please note my contact details have changed as I am moving on from this employer 8th July 2022.

With Kind Regards

Janet McGlynn
Area Manager, WFI

M 0477 308 655
E Janet.McGlynn@wfi.com.au
L au.linkedin.com/in/janetmcglynn1/en
W wfi.com.au



Good people to know.

Insurance is issued by Insurance Australia Limited ABN 11 000 016 722 AFSL 227681 trading as WFI.
Any advice is general only.

To see if a product is right for you, always consider your own circumstances and the relevant Product Disclosure Statement and Target Market Determination available from www.wfi.com.au. The level of cover we provide may be different to that under other general insurance products. If you're not completely satisfied with your policy, you may request cancellation in writing to us, or by contacting us using the details below. Information about our cooling-off period can be found in our

Product Disclosure Statement.

If you would like any further information about this financial product, or if you need to speak with us, you can reach us by:

- *Calling Janet McGlynn on 0477 308 655*
- *Contacting WFI on 1300 934 934*
- *Emailing Janet McGlynn at janet.mcglynn@wfi.com.au*

Information Security Classification - INTERNAL

The information transmitted in this message and its attachments (if any) is intended only for the person or entity to which it is addressed.

The message may contain confidential and/or privileged material. Any review, retransmission, dissemination or other use of, or taking of any action in reliance upon this information, by persons or entities other than the intended recipient is prohibited.

If you have received this in error, please contact the sender and delete this e-mail and associated material from any computer.

The intended recipient of this e-mail may only use, reproduce, disclose or distribute the information contained in this e-mail and any attached files, with the permission of the sender.

This message has been scanned for viruses.

Land Capability Assessment

8520 Channel Highway, Woodstock



April 2022

Site Information

Client: Janet McGlynn

Address: 8520 Channel Highway, Woodstock

Site Area: 8.9 Ha

Date of Assessment: 29/3/22

Mapped Geology: Jurassic Dolerite

Vegetation: Pasture

Slope: Moderately to gently sloping

Introduction

8520 Channel Highway is located approximately 2km south of Woodstock and is approximately 8.9 H.a in total area. The land from the site to the eastern bank of Huon River is zoned as “Agricultural” by the council, whereas the land surrounding the site is zoned “Rural” (Figure 2). The current land use is typical of Rural land; with a home, sheds and a small number of livestock. The landowners wish to dispute the zoning of their land as Agricultural, claiming it is more appropriately zoned as Rural, and a land capability assessment was required for this purpose.

This report has utilized the LIST mapping tool for geological and agronomic information gathering and figure construction. Soil pit classification and assessment, site walks, and observation of cuttings were performed to gather specific local information for this report.



Figure 1. The site is situated south of the Woodstock township, outlined in blue.

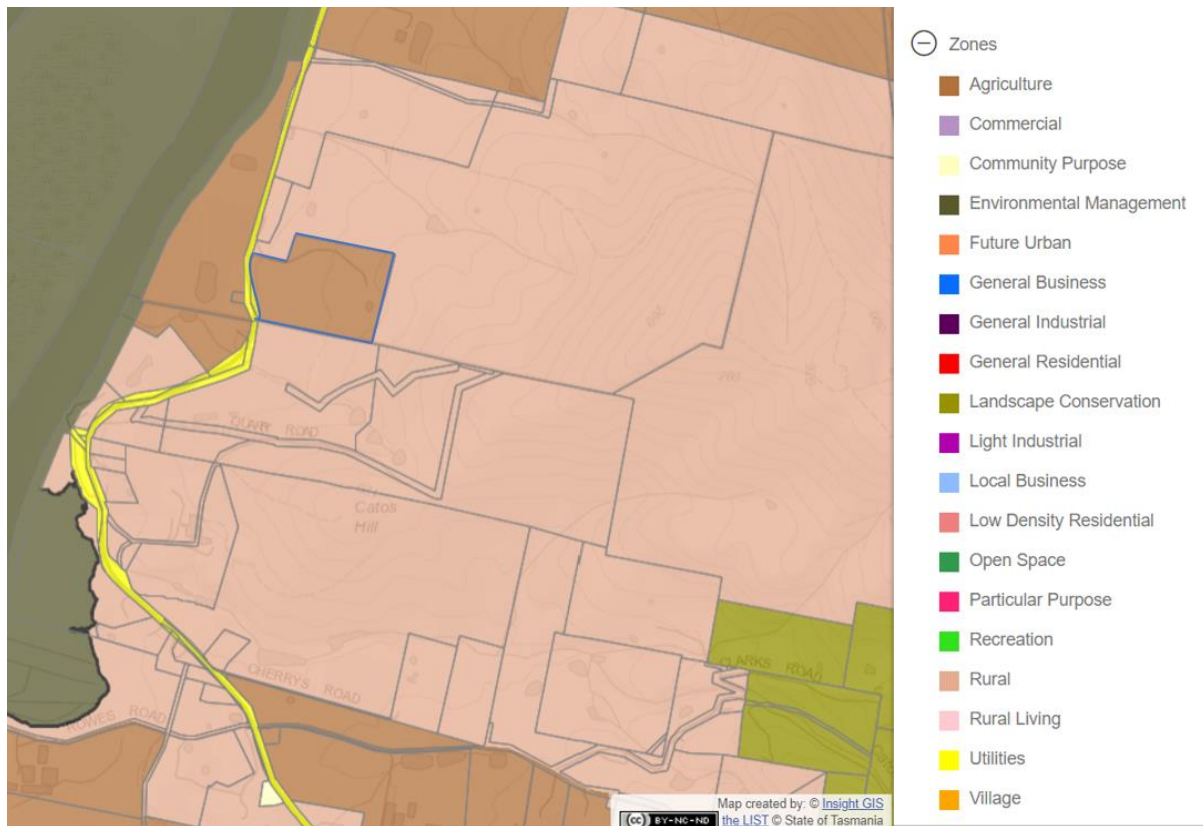


Figure 2. The site (outlined in blue) is zoned as Agricultural and surrounded by land zoned as Rural.

Land Capability Assessment

The surrounding area has been previously assessed for land capability by the department of Primary Industries, Parks, Water and Environment (DPIPWE) and classified as Class 5 land (Figure 3). The Land Capability assessment system gives a rating of 1 to 7 (1 = best and 7 = worst) to assessed land according to its ability to sustainably support agricultural activity (Noble, 1992). Land capability is generally based on unchanging physical characteristics and not social or economic factors.

Classes 1 to 3 are considered prime agricultural land with increasing degrees of cropping limitations in class 2 and 3. Class 4 land is only marginally suitable for cropping and mostly used for livestock. Class 5 and 6 land is only suitable for grazing with increasing limitations in class 6. Class 7 land is completely unsuitable to agriculture of any kind (Noble, 1992).

This Land Capability assessment was conducted to determine whether the DPIPWE Land Capability classifications were accurate at paddock level and to investigate the merit of re-zoning the property as Rural land.

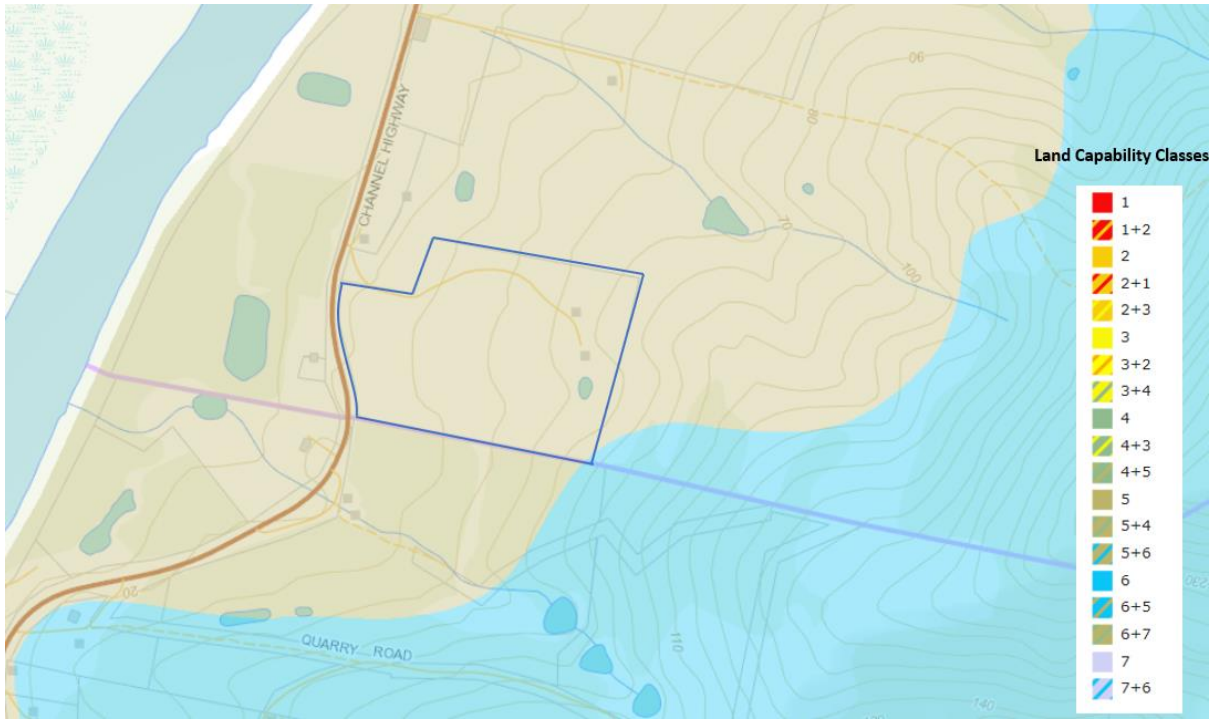


Figure 3: Current land capability zoning of 8520 Channel Highway (outlined in blue) and the surrounding area.

Local Geology and Topography

The site is entirely underlain by Jurassic dolerite with areas of silicious Triassic sandstone and Permian sedimentary rocks nearby (Figure 4). Therefore, it is most likely that the site's soils are derived from the dolerite with some windblown material derived from the Permian and Triassic rocks. The site slopes from west to east in a decreasing gradient. A dam is present in a natural drainage line which runs in an east south-easterly direction in the south-western corner of the property (Figure 4).

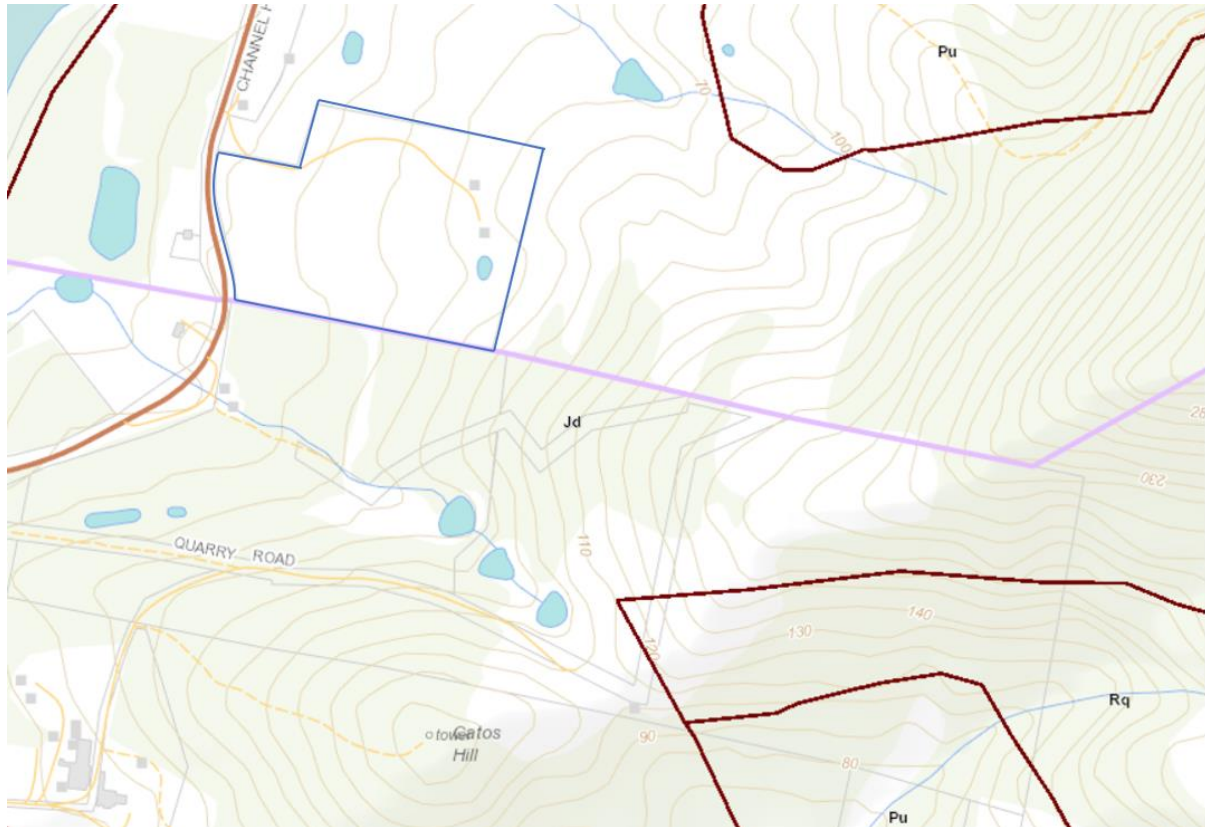


Figure 4: Geology map of the site and surrounding area. Site outlined in blue. Jd = Jurassic dolerite, Rq = Triassic sand stone, and Pu = Permian marine mudstones, siltstones and sandstones.

Soil Profile Descriptions

Cutting 1



Cutting 1		
Depth (cm)	Horizon	Field Texture +Description
0 - 35	A1	4/6 7.5YR, Clay Loam Sandy, strong polyhedral structure, firm peds, abundant roots

Figure 5: Cutting 1 profile image and description

Notes

- Shallow dusty topsoil over dolerite bedrock.
- Abundant < fist sized dolerite stones present throughout.
- Abundant dolerite grit/course sand present in finer matrix

Pit 1



Figure 6: Pit 1 profile image and description

Notes:

- Dolerite stones present in all layers increasing in size with depth.
- Plentiful Ironstone gravels present in A3 horizon.
- Dry dusty topsoil.

Pit 1 – Chromosol on Doleritic Colluvium		
Depth (cm)	Horizon	Field Texture +Description
0 - 20	A1	5/2 7.5YR, Sandy Clay Loam , strong fine granular structure, many roots
20 - 40	A3	6/6 10YR, Light Clay , moderate fine granular structure, abundant ironstone gravels, many roots,
~ 40	Stone line	Large dolerite clasts
40 - 65	B2	5/6 7.5YR, Medium Clay , strong polyhedral structure, strong peds, abundant roots
65 - 90	C	Strongly weathered crumbly dolerite

Pit 2



Pit 2 – Chromosol		
Depth (cm)	Horizon	Field Texture +Description
0 - 18	A1	4/4 10YR, Loam , strong polyhedral structure, firm peds, abundant roots
18 - 45	A3	6/4 10YR, Clay Loam , moderate polyhedral structure, weak peds, abundant ironstone gravels, few roots
45 - 55	B2	7/3 10YR, Medium Clay , strong structure, strong peds

Figure 8: Pit 2 profile image and description

Notes:

- Due to the abundant large dolerite rocks the digger could only get down to about 50cm. The top of the B horizon is barely visible in the pit, hence structure type and root abundance could not be assessed.
- The topsoil was very dry and dusty, indicating vulnerability to wind erosion.
- Plentiful Ironstone gravels present in A3 horizon.
- Small very pale brown (7.3 10YR) to yellow mottles present in the B horizon indicating seasonal waterlogging.

Pit 3



Pit 3 - Chromosol		
Depth (cm)	Horizon	Field Texture +Description
0 - 10	A1	4/4 7.5YR, Loam , strong polyhedral structure, very firm peds, abundant roots
10 - 18	A2	6/3 10YR, Sandy Loam , massive structure, very firm peds, common roots
18 - 50	B2	5/8 10YR, Medium Clay , strong columnar structure, strong peds, common roots
50 - 70	C	Deeply weathered dolerite
70 - 85	D	Dolerite bedrock

Figure 9: Pit 3 profile image and description

Notes:

- The massive structure of the A2 horizon and coarse columnar structure of the B2 suggests sodicity.

Pit 4



Pit 4 - Chromosol on Alluvium		
Depth (cm)	Horizon	Field Texture +Description
0 - 20	A1	Not assessed
20 - 35	A2	Not assessed
35 - 70	B2	Not assessed
70 - 250	C	Deep alluvium, not assessed

Figure 10: Pit 4 profile image and description

Notes:

- The pit was too deep and the sides were too steep to climb into. The edges were unsafe, therefore, a detailed pit description was not performed.
- However, the profile appears similar to Pit 3, with a fine loamy topsoil and pale A2 horizon over yellow – brown medium clay with columnar structure.

Pit 5



Pit 5 - Chromosol		
Depth (cm)	Horizon	Field Texture +Description
0 - 10	A1	4/4 7.5YR, Loam , strong polyhedral structure, very firm peds, many roots
10 - 35	A3	6/4 7.5YR, Clay loam sandy , strong polyhedral structure, firm peds, abundant ironstone gravels, common roots
35 - 70	B2	6/4 7.5YR, Medium Clay , strong columnar structure, very strong peds, few roots
70 - 100	BC	Deeply weathered dolerite

Figure 11: Pit 5 profile image and description

Notes

- The A3 horizon disintegrates when wet, and is therefore likely sodic.
- Large dolerite boulders present in the A3 horizon
- Large cracks in subsoil suggest significant shrinking and swelling with water content.

Site Interpretation

The local area often is very dry in summer and loose, dry topsoils are present over the entire site. There is high risk of wind erosion if pastures are disturbed or degraded by machinery or stock. The soils are thinner and highly stony on the steeper, eastern half of the property (see Pit 1 and Cutting 1), making these areas completely unsuitable for cropping of any kind. Also, high risk of water and wind erosion when the soils are dry makes these areas suitable only for light grazing when erosion risk is low.

The soils are deeper on the flatter western half of the property, especially around the drainage line in the south-western corner (see Pit 4). Poorly draining and potentially sodic subsoils are present underneath the dusty topsoils of the western half, as evidenced by subsoil mottling and weakly structured E horizons composed of weak aggregates which disintegrate when wet. Cropping suitability is thus very low in this area despite the flatter topography and reduced stoniness due to waterlogging, compaction and erosion risk. Maximum sustainable stocking rates are also limited due to waterlogging and compaction risk in winter, and wind erosion when the soil dries in summer.

The property is theoretically suitable for horticulture, but the lack of water is problematic. The existing dam and local catchment is too small to support horticulture, and pumping from the Huon River is infeasible due to the highway and the property not bordering the river.

The site was previously zoned by DIPIPWE as Land Capability Class 5 with Class 6 land abutting the eastern border. However, the eastern half of the property is more appropriately classed as Class 6 land due to steep slopes, stoniness, loose easily erodible topsoils and susceptibility to drought. The western half is appropriately classed as Class 5 land with easily erodible topsoils, lack of water, poor drainage and sodic subsoils.

Summary

The site has generally low land capability class. Steep slopes, stoniness, susceptibility to erosion and sodic subsoils mean the entire site is unsuitable for cropping of any kind. Additionally, its lack of access to water renders it unsuitable for horticulture. The land is theoretically suitable for pastoral uses, but its small (<10 H.a) size would make such applications un-economical. I believe this merits the site's reclassification from Agricultural land to Rural, as it does not meet the criteria for an Agricultural zoning.

References

Noble, K.E., 1992. Land capability handbook. In: Industry, D.o.P. (Ed.). Department of Primary Industry, Hobart.