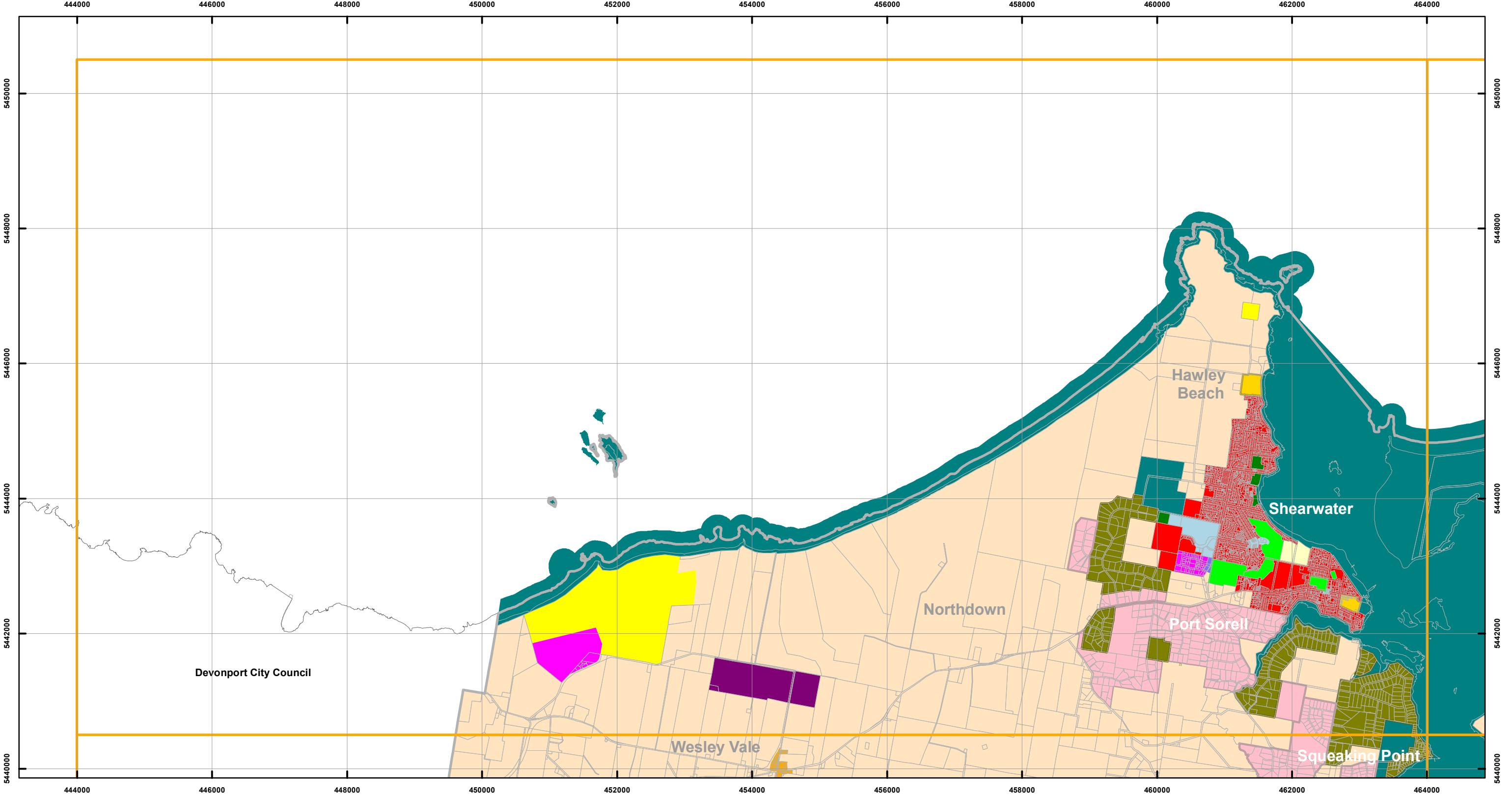


LATROBE INTERIM PLANNING SCHEME - 2013 - ZONING

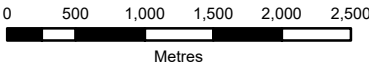


Zones

<div></div> General Residential	<div></div> Urban Mixed Use	<div></div> Local Business	<div></div> General Industrial	<div></div> Major Tourism
<div></div> Inner Residential	<div></div> Village	<div></div> General Business	<div></div> Rural Resource	<div></div> Port and Marine
<div></div> Low Density Residential	<div></div> Community Purpose	<div></div> Central Business	<div></div> Significant Agricultural	<div></div> Particular Purpose
<div></div> Rural Living	<div></div> Recreation	<div></div> Commercial	<div></div> Utilities	<div></div> Land Parcels
<div></div> Environmental Living	<div></div> Open Space	<div></div> Light Industrial	<div></div> Environmental Management	



Map 1 of 14



Coordinate System: GDA 94 MGA Zone 55

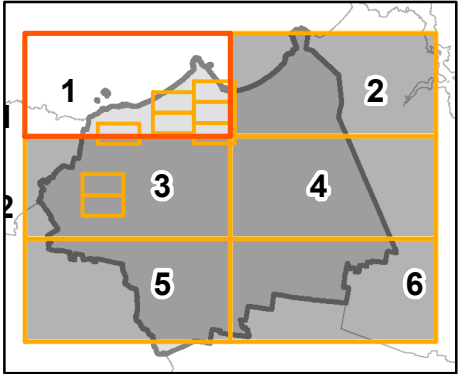
Date of cadastre: 11/05/2023

Zoning data from Latrobe Council
As amended at 20/07/2022

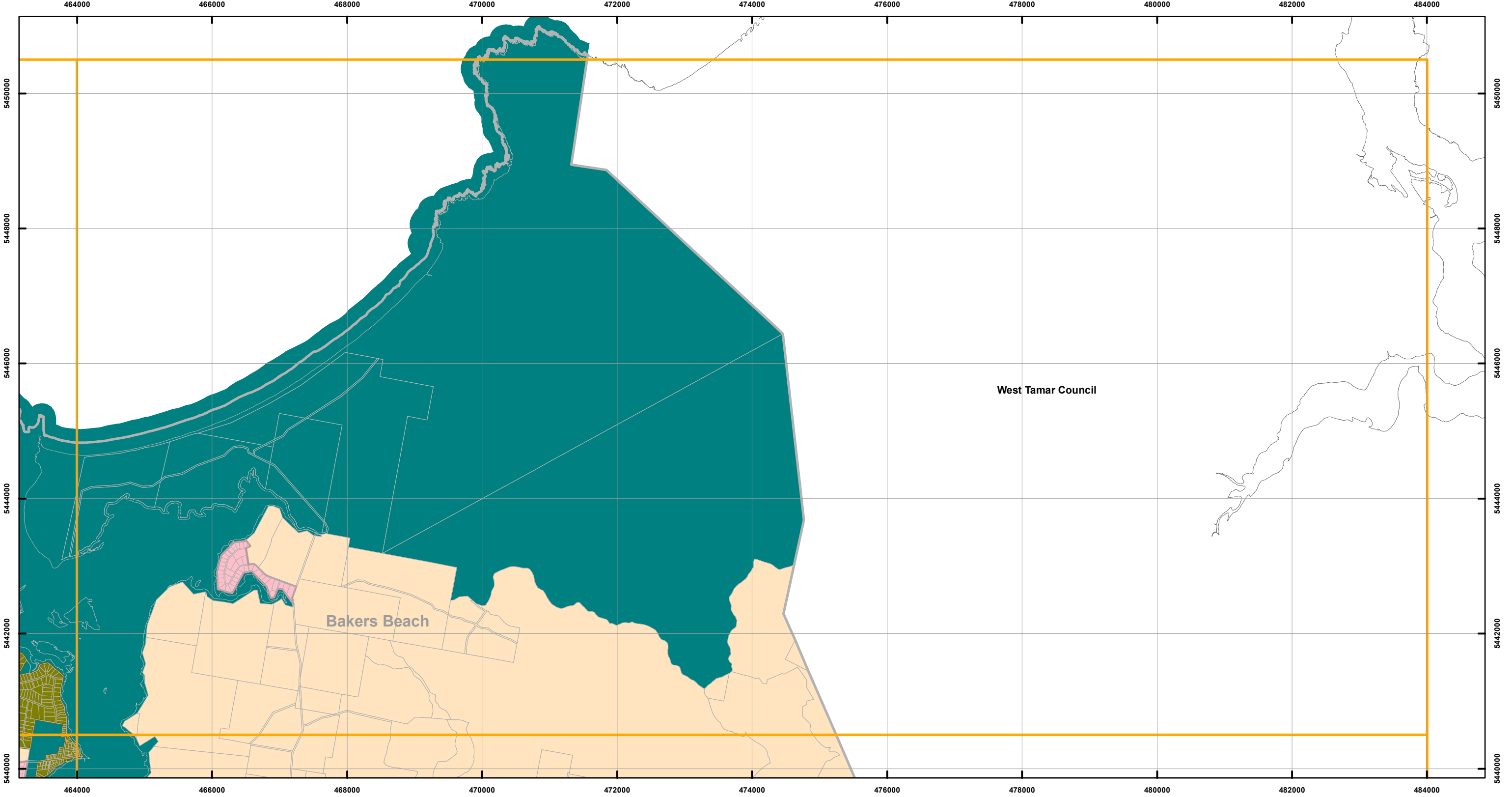
Topographic data from the LIST © State of Tasmania

Print Date: 26/05/2023

LOCATION MAP



LATROBE INTERIM PLANNING SCHEME - 2013 - ZONING

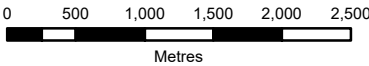


Zones

General Residential	Urban Mixed Use	Local Business	General Industrial	Major Tourism
Inner Residential	Village	General Business	Rural Resource	Port and Marine
Low Density Residential	Community Purpose	Central Business	Significant Agricultural	Particular Purpose
Rural Living	Recreation	Commercial	Utilities	Land Parcels
Environmental Living	Open Space	Light Industrial	Environmental Management	



Map 2 of 14



Coordinate System: GDA 94 MGA Zone 55

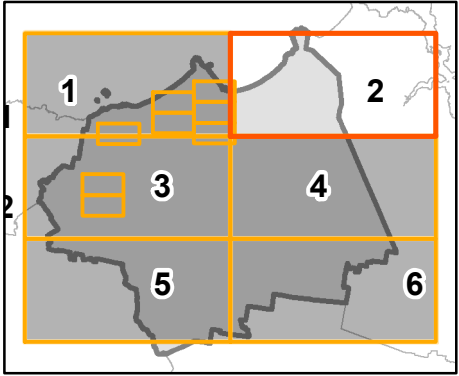
Date of cadastre: 11/05/2023

Zoning data from Latrobe Council
As amended at 20/07/2022

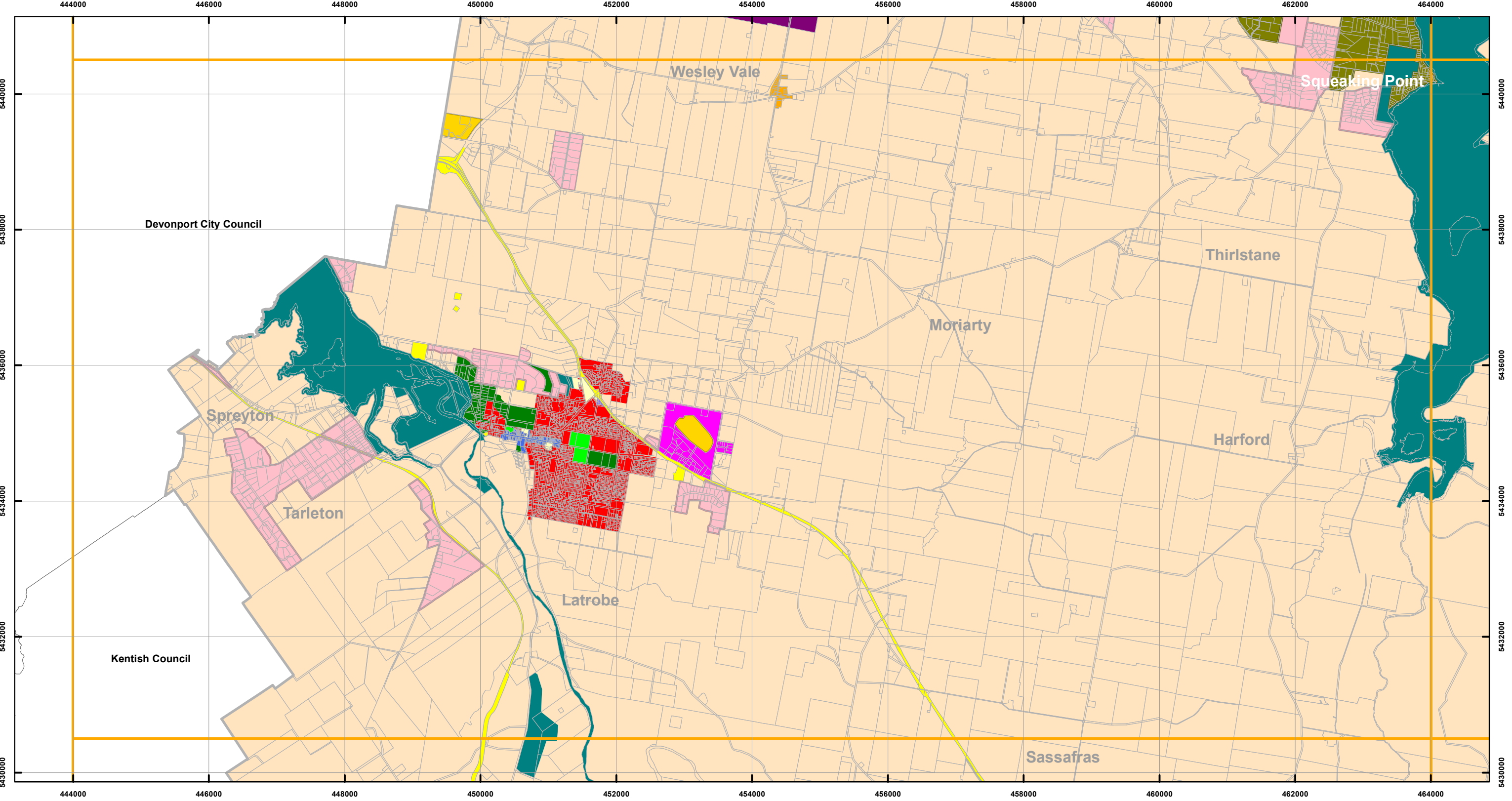
Topographic data from the LIST © State of Tasmania

Print Date: 26/05/2023

LOCATION MAP



LATROBE INTERIM PLANNING SCHEME - 2013 - ZONING

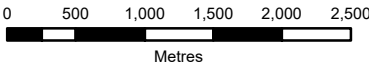


Zones

General Residential	Urban Mixed Use	Local Business	General Industrial	Major Tourism
Inner Residential	Village	General Business	Rural Resource	Port and Marine
Low Density Residential	Community Purpose	Central Business	Significant Agricultural	Particular Purpose
Rural Living	Recreation	Commercial	Utilities	Land Parcels
Environmental Living	Open Space	Light Industrial	Environmental Management	



Map 3 of 14



Coordinate System: GDA 94 MGA Zone 55

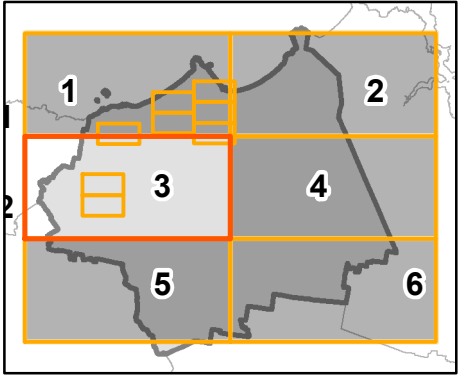
Date of cadastre: 11/05/2023

Zoning data from Latrobe Council
As amended at 20/07/2022

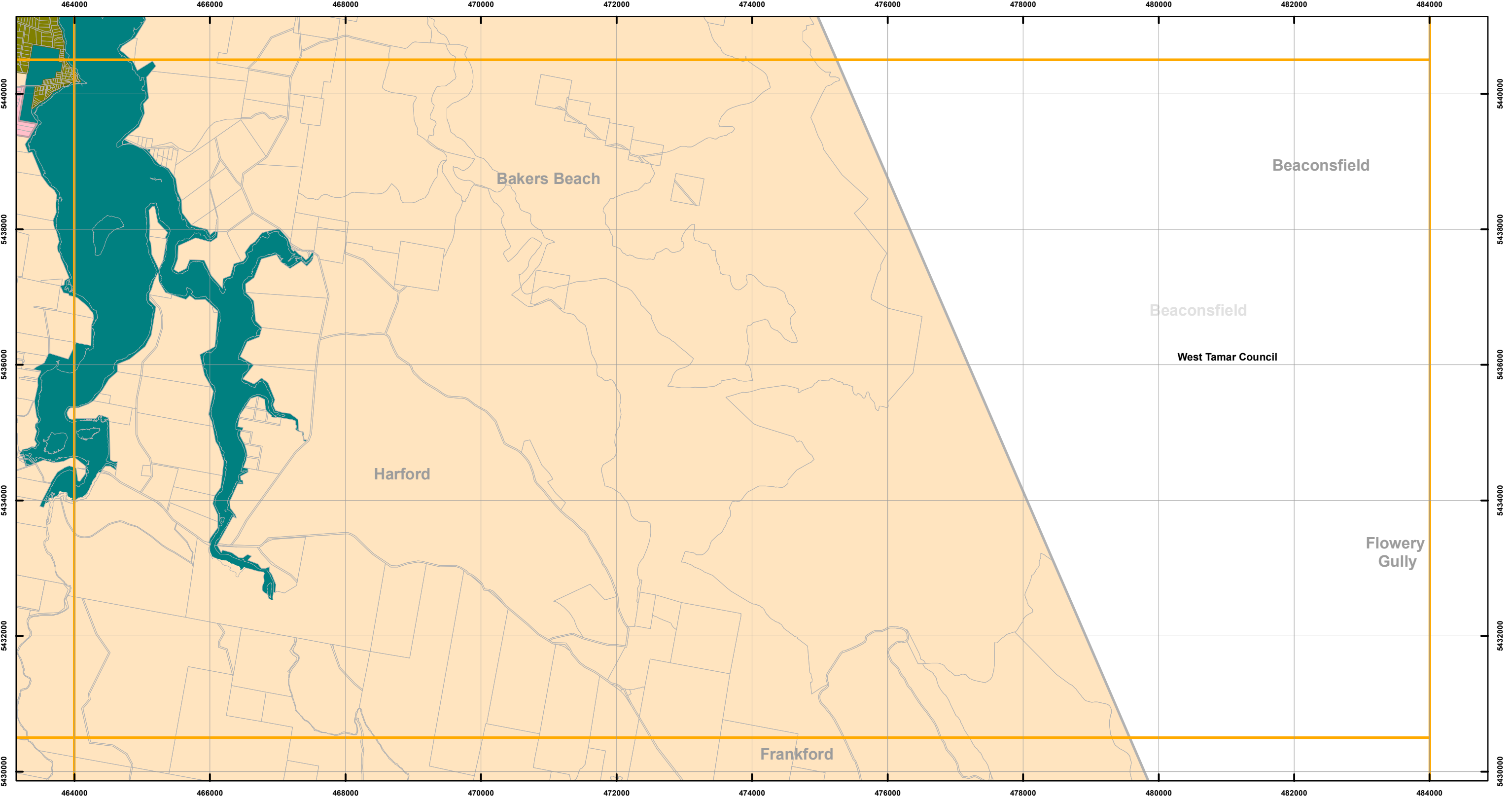
Topographic data from the LIST © State of Tasmania

Print Date: 26/05/2023

LOCATION MAP



LATROBE INTERIM PLANNING SCHEME - 2013 - ZONING

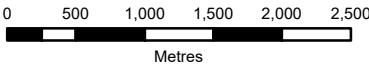


Zones

General Residential	Urban Mixed Use	Local Business	General Industrial	Major Tourism
Inner Residential	Village	General Business	Rural Resource	Port and Marine
Low Density Residential	Community Purpose	Central Business	Significant Agricultural	Particular Purpose
Rural Living	Recreation	Commercial	Utilities	Land Parcels
Environmental Living	Open Space	Light Industrial	Environmental Management	



Map 4 of 14



Coordinate System: GDA 94 MGA Zone 55

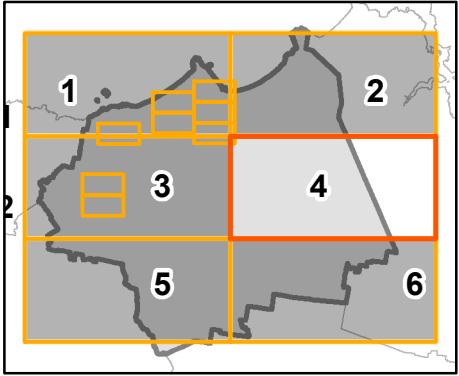
Date of cadastre: 11/05/2023

Zoning data from Latrobe Council
As amended at 20/07/2022

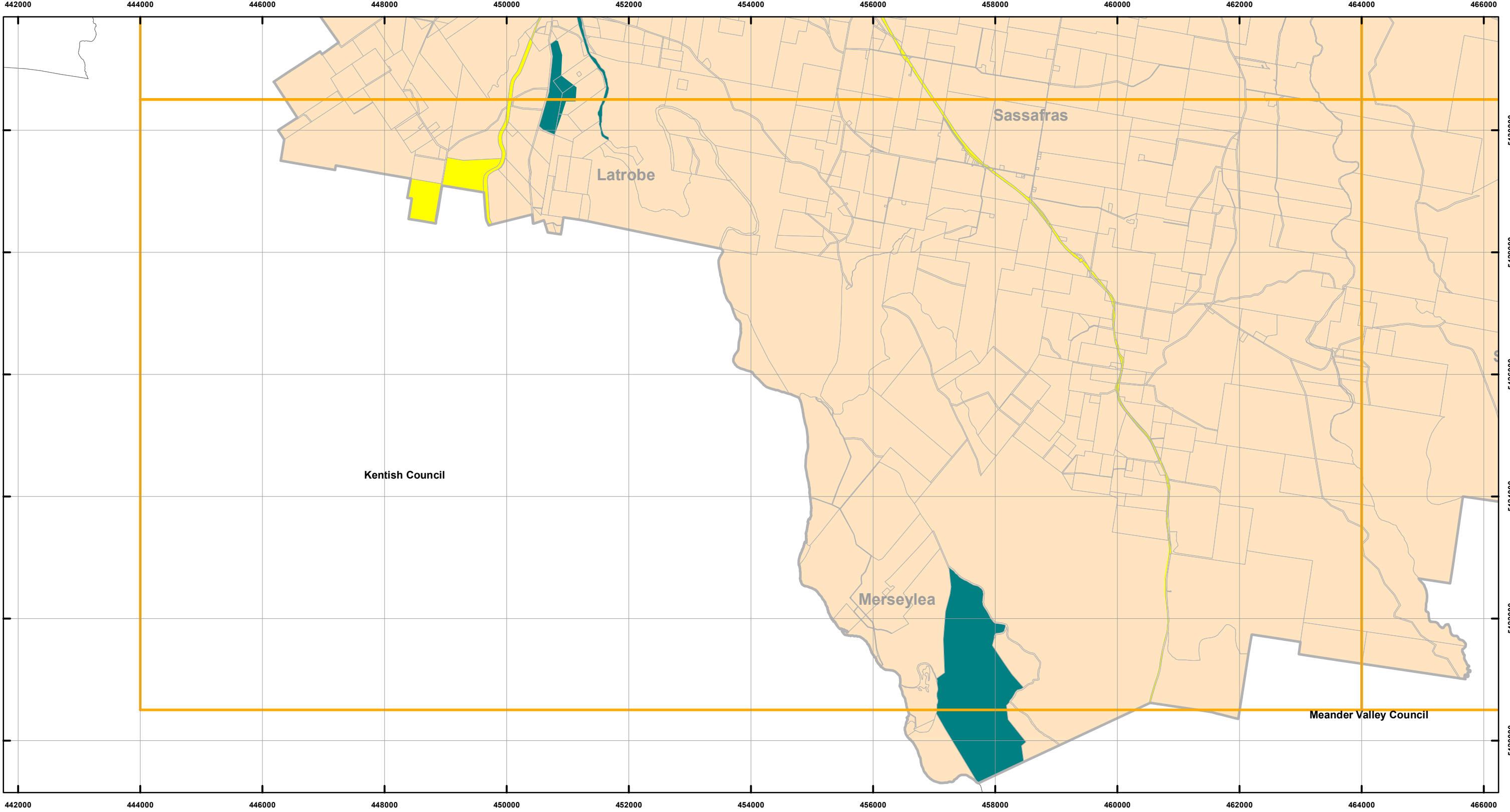
Topographic data from the LIST © State of Tasmania

Print Date: 26/05/2023

LOCATION MAP



LATROBE INTERIM PLANNING SCHEME - 2013 - ZONING

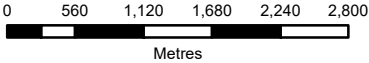


Zones

General Residential	Urban Mixed Use	Local Business	General Industrial	Major Tourism
Inner Residential	Village	General Business	Rural Resource	Port and Marine
Low Density Residential	Community Purpose	Central Business	Significant Agricultural	Particular Purpose
Rural Living	Recreation	Commercial	Utilities	Land Parcels
Environmental Living	Open Space	Light Industrial	Environmental Management	



Map 5 of 14



Coordinate System: GDA 94 MGA Zone 55

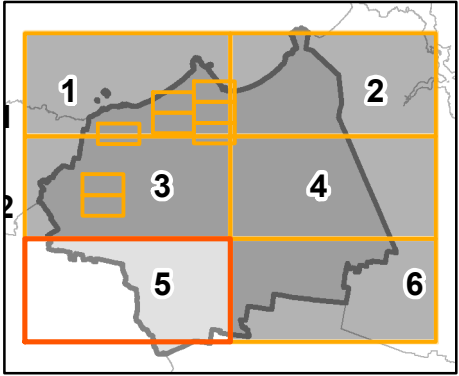
Date of cadastre: 11/05/2023

Zoning data from Latrobe Council
As amended at 20/07/2022

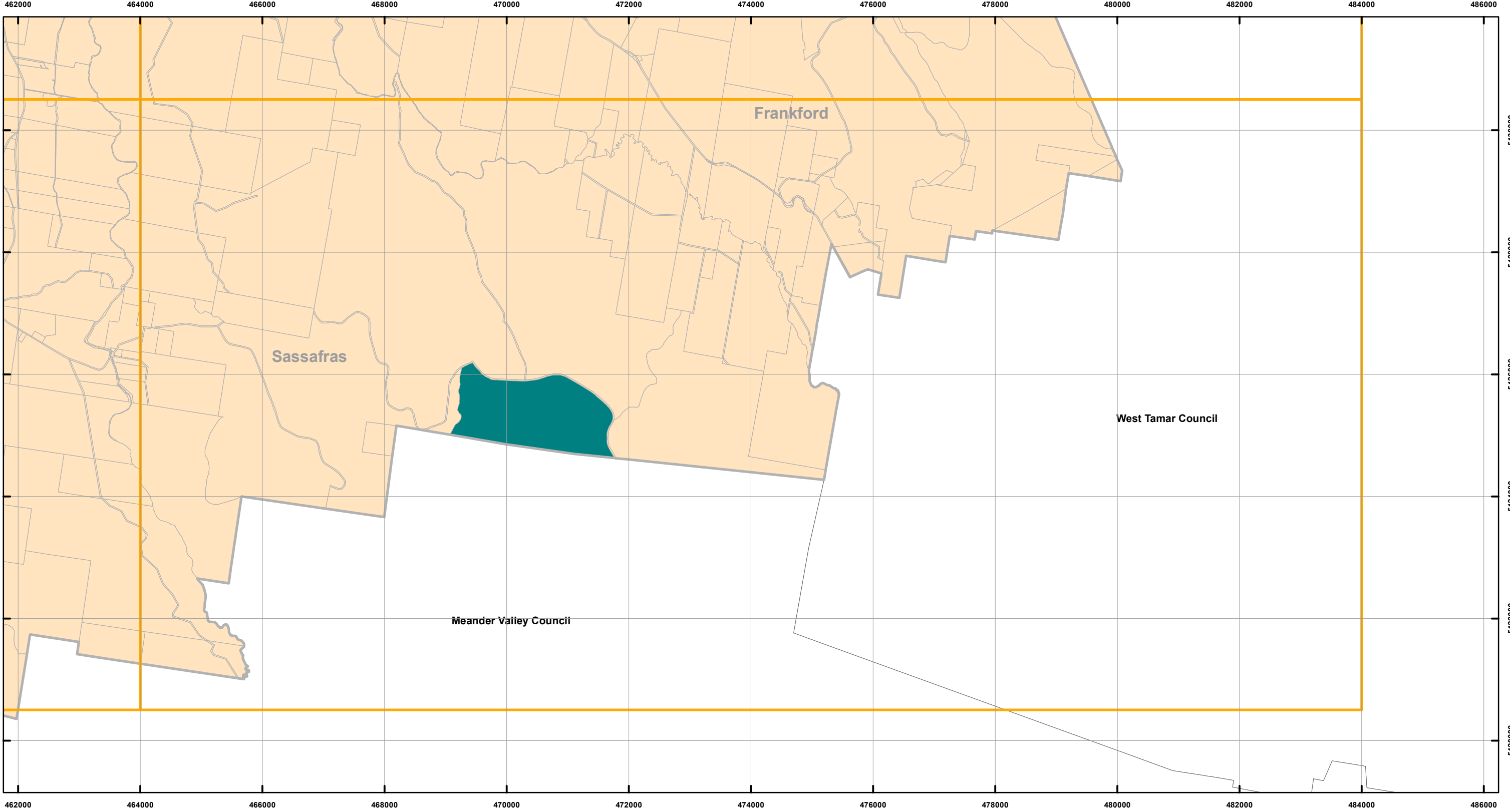
Topographic data from the LIST © State of Tasmania

Print Date: 26/05/2023

LOCATION MAP



LATROBE INTERIM PLANNING SCHEME - 2013 - ZONING

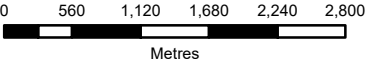


Zones

General Residential	Urban Mixed Use	Local Business	General Industrial	Major Tourism
Inner Residential	Village	General Business	Rural Resource	Port and Marine
Low Density Residential	Community Purpose	Central Business	Significant Agricultural	Particular Purpose
Rural Living	Recreation	Commercial	Utilities	Land Parcels
Environmental Living	Open Space	Light Industrial	Environmental Management	



Map 6 of 14



Coordinate System: GDA 94 MGA Zone 55

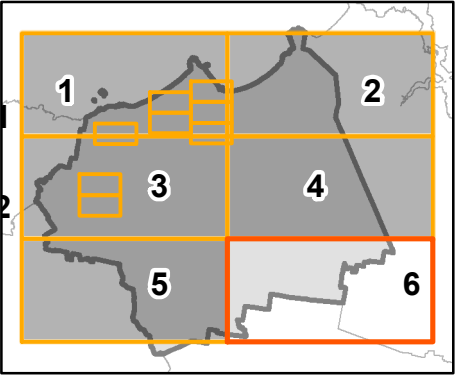
Date of cadastre: 11/05/2023

Zoning data from Latrobe Council
As amended at 20/07/2022

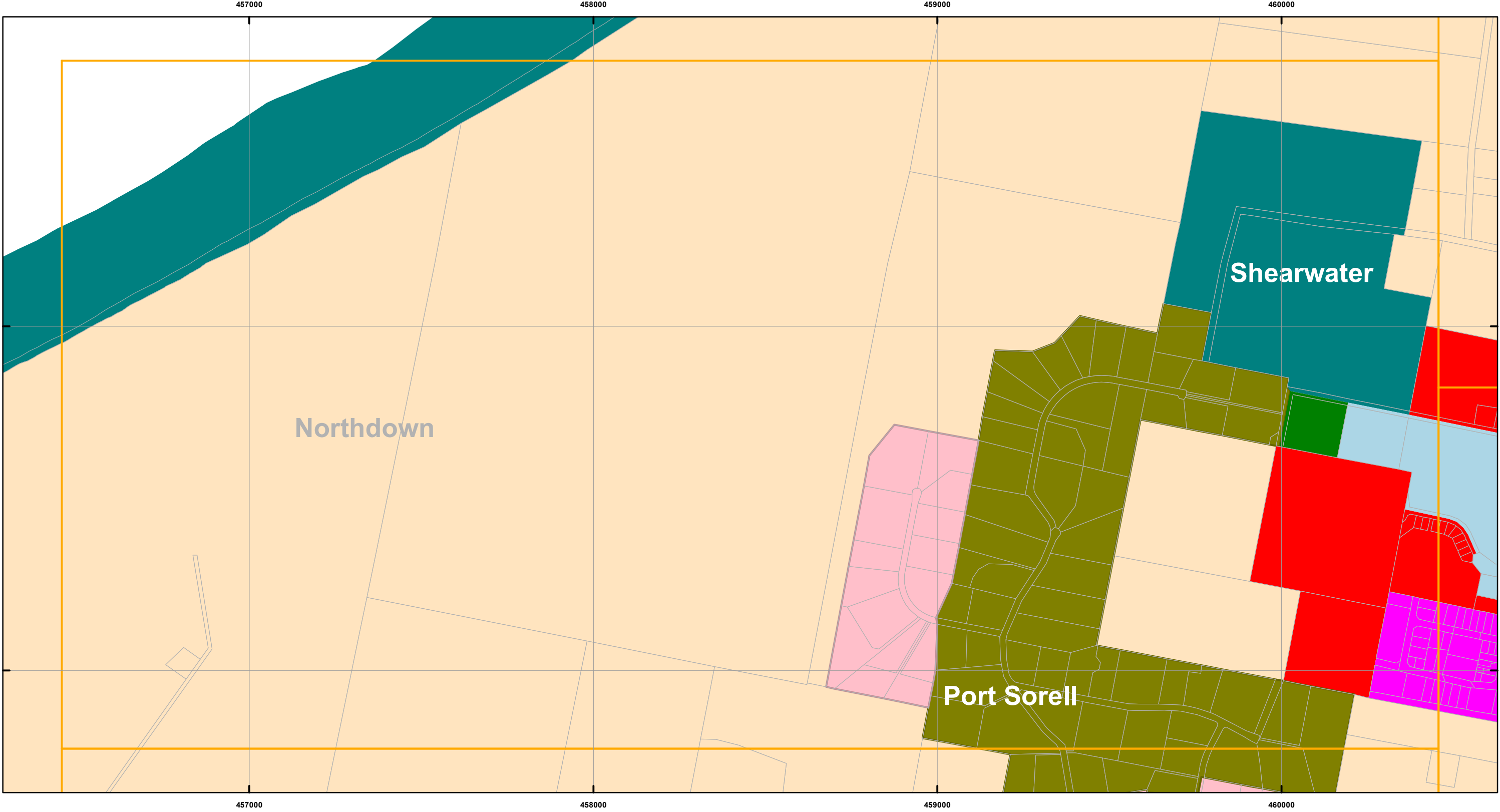
Topographic data from the LIST © State of Tasmania

Print Date: 26/05/2023

LOCATION MAP



LATROBE INTERIM PLANNING SCHEME - 2013 - ZONING

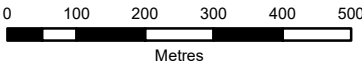


Zones

General Residential	Urban Mixed Use	Local Business	General Industrial	Major Tourism
Inner Residential	Village	General Business	Rural Resource	Port and Marine
Low Density Residential	Community Purpose	Central Business	Significant Agricultural	Particular Purpose
Rural Living	Recreation	Commercial	Utilities	Land Parcels
Environmental Living	Open Space	Light Industrial	Environmental Management	



Map 7 of 14



Coordinate System: GDA 94 MGA Zone 55

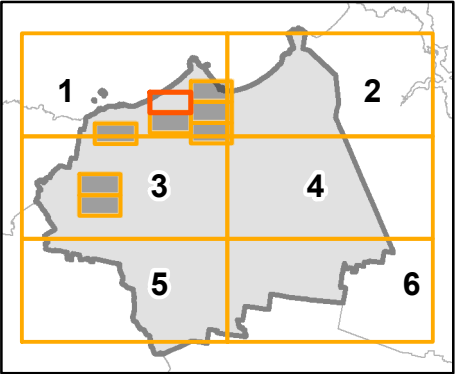
Date of cadastre: 11/05/2023

Zoning data from Latrobe Council
As amended at 20/07/2022

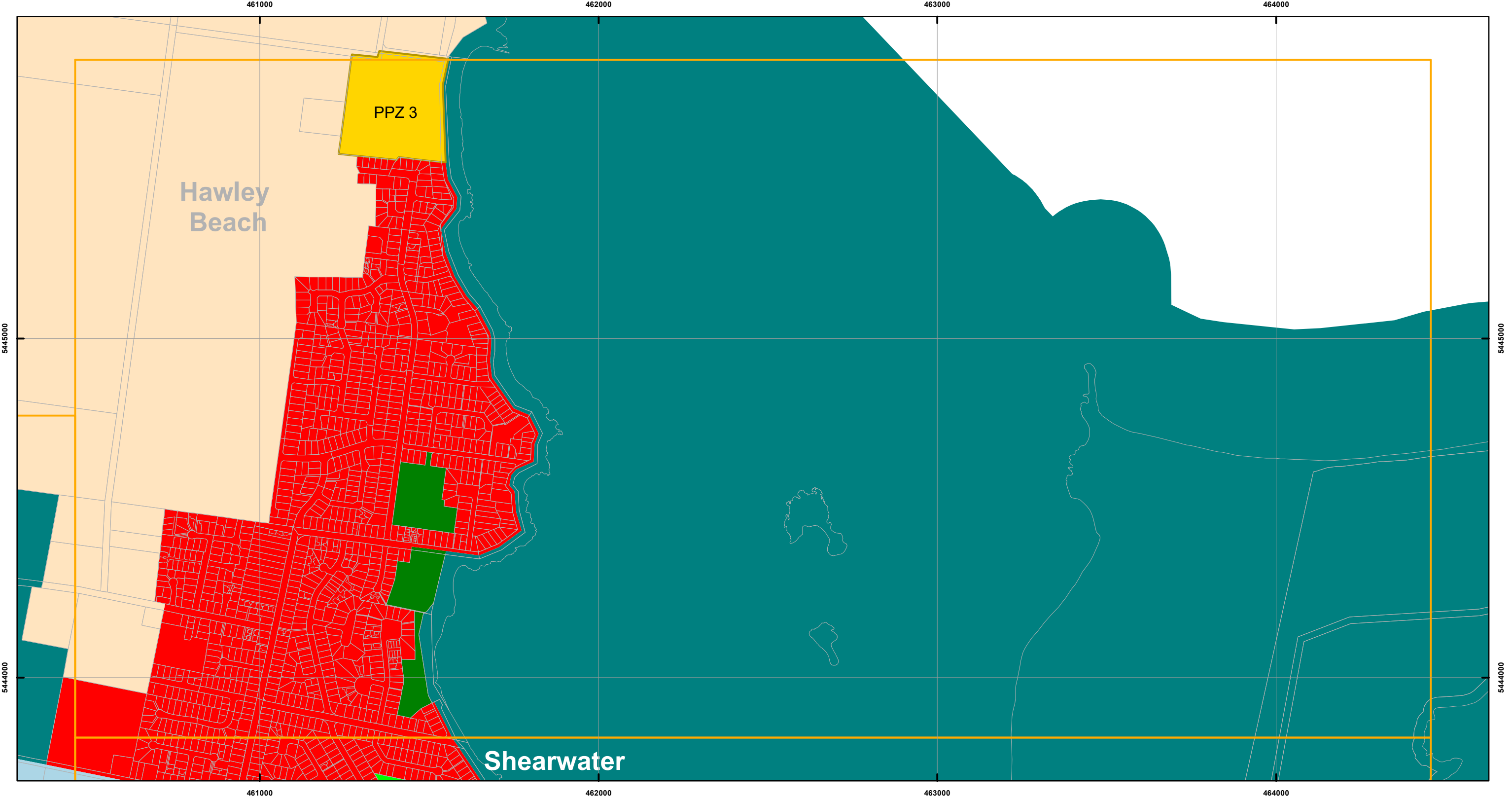
Topographic data from the LIST © State of Tasmania

Print Date: 26/05/2023

LOCATION MAP



LATROBE INTERIM PLANNING SCHEME - 2013 - ZONING



Zones

General Residential

Inner Residential

Low Density Residential

Rural Living

Environmental Living

Urban Mixed Use

Village

Community Purpose

Recreation

Open Space

Local Business

General Business

Central Business

Commercial

Light Industrial

General Industrial

Rural Resource

Significant Agricultural

Utilities

Environmental Management

Major Tourism

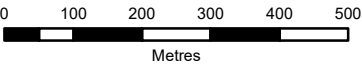
Port and Marine

Particular Purpose

Land Parcels



Map 8 of 14



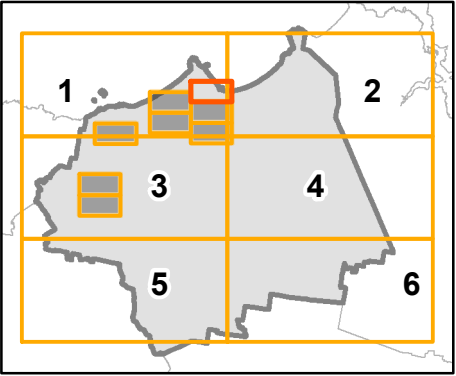
Coordinate System: GDA 94 MGA Zone 55

Date of cadastre: 11/05/2023

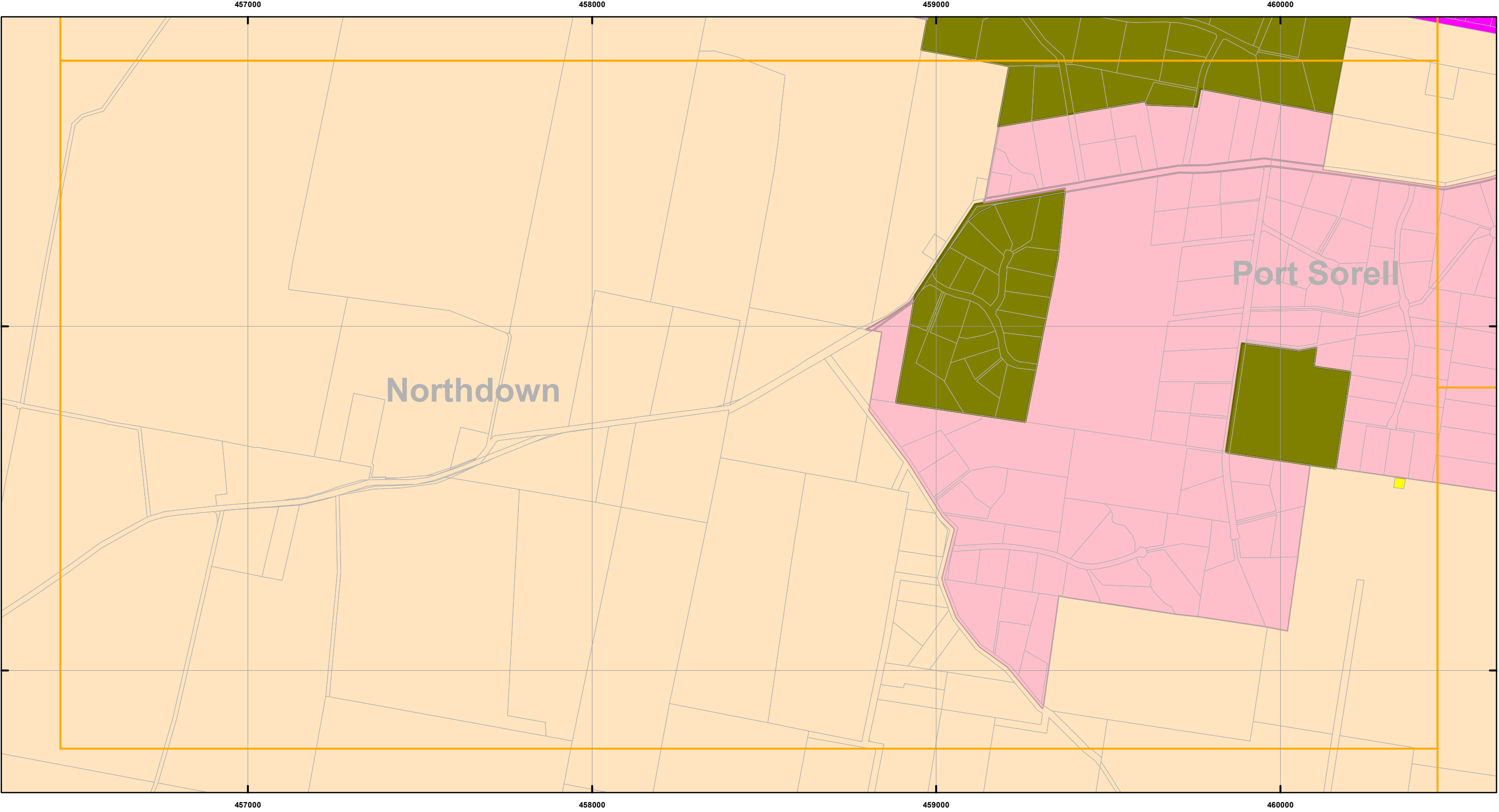
Zoning data from Latrobe Council
As amended at 20/07/2022
Topographic data from the LIST © State of Tasmania

Print Date: 26/05/2023

LOCATION MAP



LATROBE INTERIM PLANNING SCHEME - 2013 - ZONING

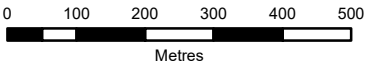


Zones

General Residential	Urban Mixed Use	Local Business	General Industrial	Major Tourism
Inner Residential	Village	General Business	Rural Resource	Port and Marine
Low Density Residential	Community Purpose	Central Business	Significant Agricultural	Particular Purpose
Rural Living	Recreation	Commercial	Utilities	Land Parcels
Environmental Living	Open Space	Light Industrial	Environmental Management	



Map 9 of 14



Coordinate System: GDA 94 MGA Zone 55

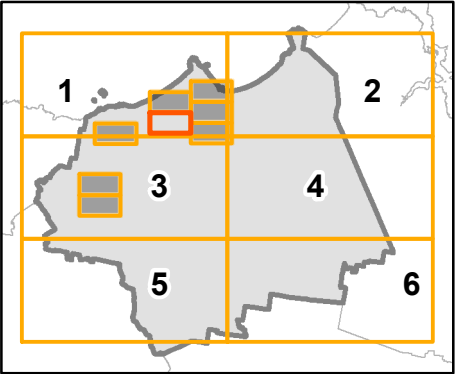
Date of cadastre: 11/05/2023

Zoning data from Latrobe Council
As amended at 20/07/2022

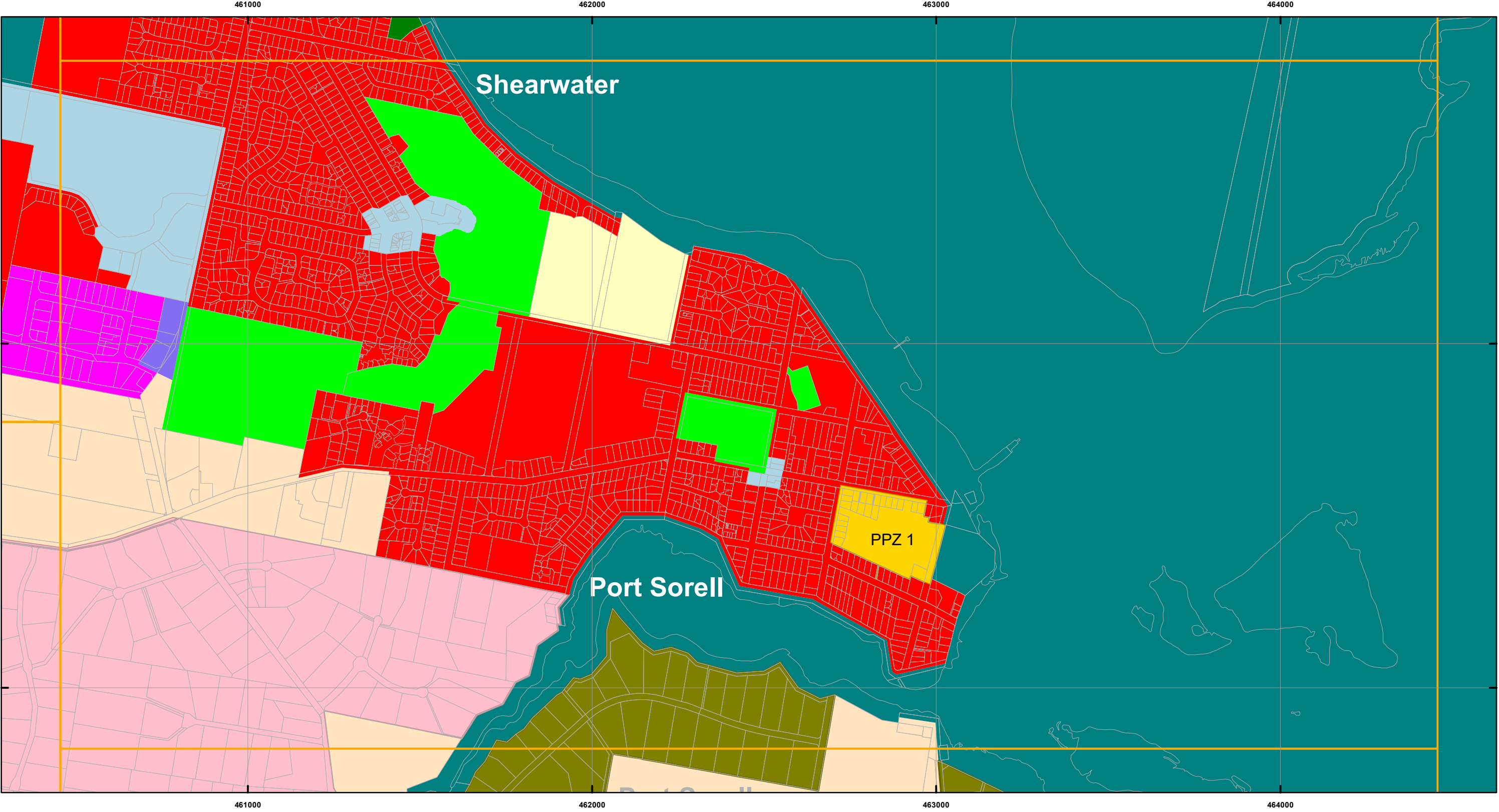
Topographic data from the LIST © State of Tasmania

Print Date: 26/05/2023

LOCATION MAP



LATROBE INTERIM PLANNING SCHEME - 2013 - ZONING

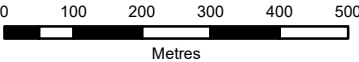


Zones

General Residential	Urban Mixed Use	Local Business	General Industrial	Major Tourism
Inner Residential	Village	General Business	Rural Resource	Port and Marine
Low Density Residential	Community Purpose	Central Business	Significant Agricultural	Particular Purpose
Rural Living	Recreation	Commercial	Utilities	Land Parcels
Environmental Living	Open Space	Light Industrial	Environmental Management	



Map 10 of 14



Coordinate System: GDA 94 MGA Zone 55

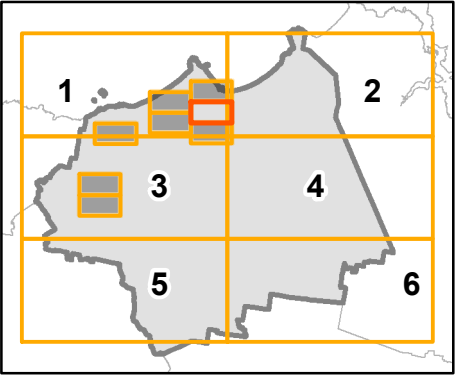
Date of cadastre: 11/05/2023

Zoning data from Latrobe Council
As amended at 20/07/2022

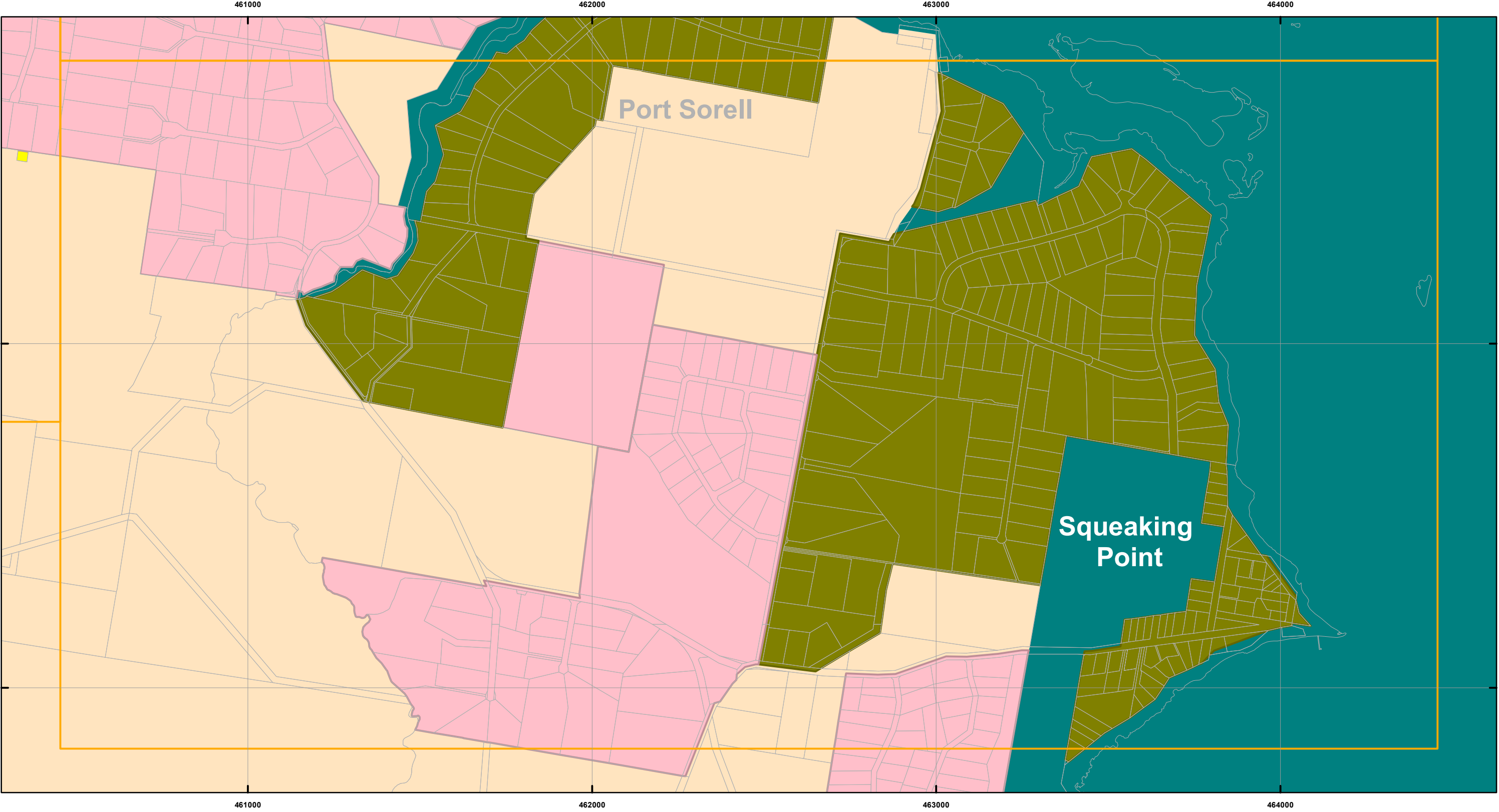
Topographic data from the LIST © State of Tasmania

Print Date: 26/05/2023

LOCATION MAP



LATROBE INTERIM PLANNING SCHEME - 2013 - ZONING

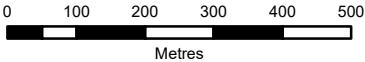


Zones

General Residential	Urban Mixed Use	Local Business	General Industrial	Major Tourism
Inner Residential	Village	General Business	Rural Resource	Port and Marine
Low Density Residential	Community Purpose	Central Business	Significant Agricultural	Particular Purpose
Rural Living	Recreation	Commercial	Utilities	Land Parcels
Environmental Living	Open Space	Light Industrial	Environmental Management	



Map 11 of 14



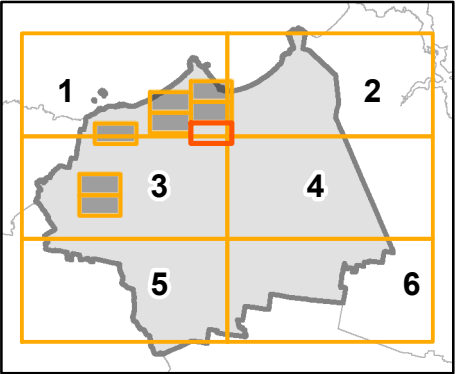
Coordinate System: GDA 94 MGA Zone 55

Date of cadastre: 11/05/2023

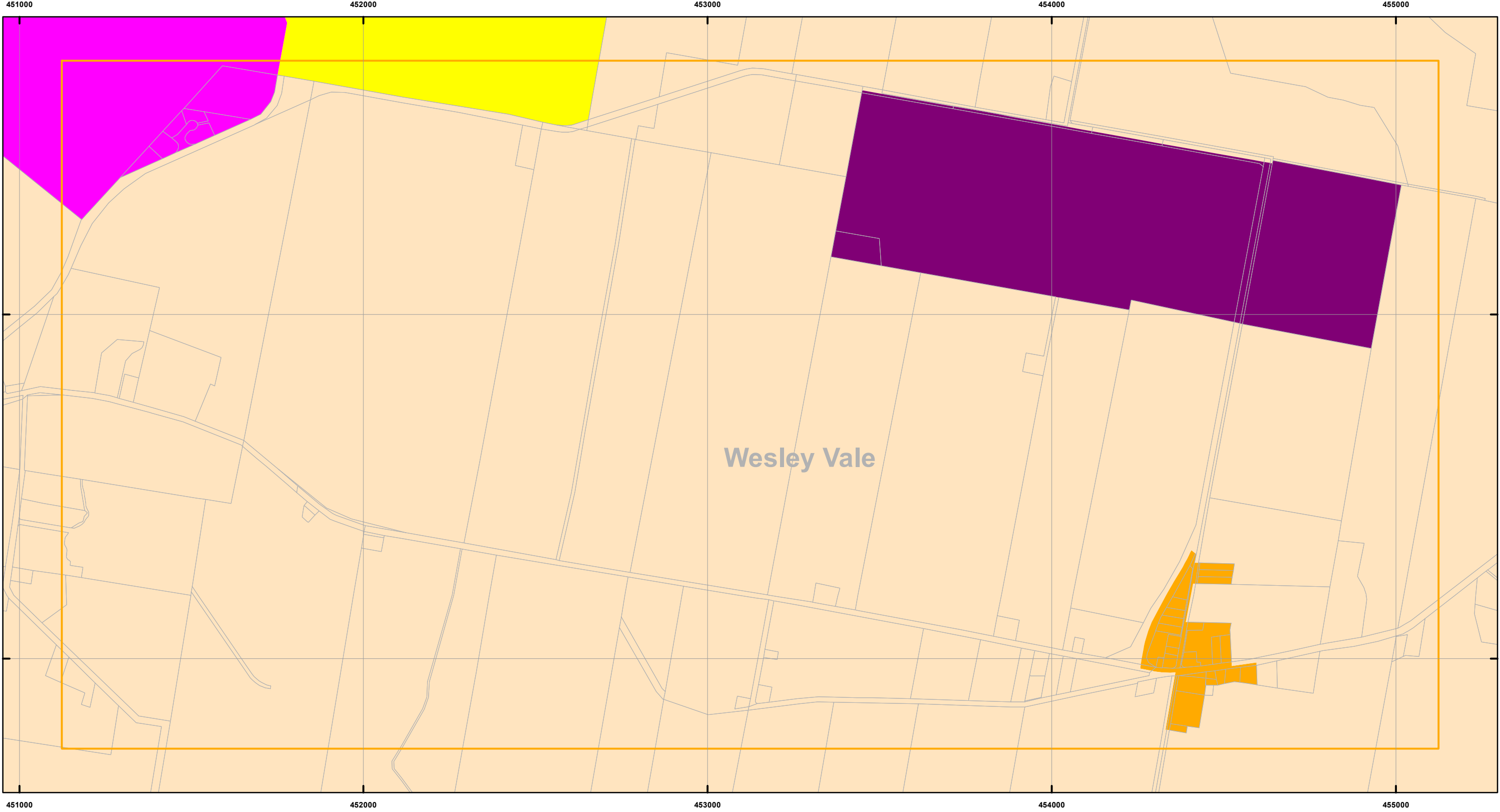
Zoning data from Latrobe Council
As amended at 20/07/2022
Topographic data from the LIST © State of Tasmania

Print Date: 26/05/2023

LOCATION MAP



LATROBE INTERIM PLANNING SCHEME - 2013 - ZONING

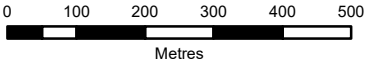


Zones

General Residential	Urban Mixed Use	Local Business	General Industrial	Major Tourism
Inner Residential	Village	General Business	Rural Resource	Port and Marine
Low Density Residential	Community Purpose	Central Business	Significant Agricultural	Particular Purpose
Rural Living	Recreation	Commercial	Utilities	Land Parcels
Environmental Living	Open Space	Light Industrial	Environmental Management	



Map 12 of 14



Coordinate System: GDA 94 MGA Zone 55

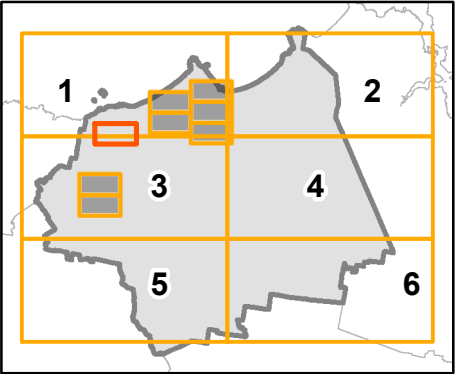
Date of cadastre: 11/05/2023

Zoning data from Latrobe Council
As amended at 20/07/2022

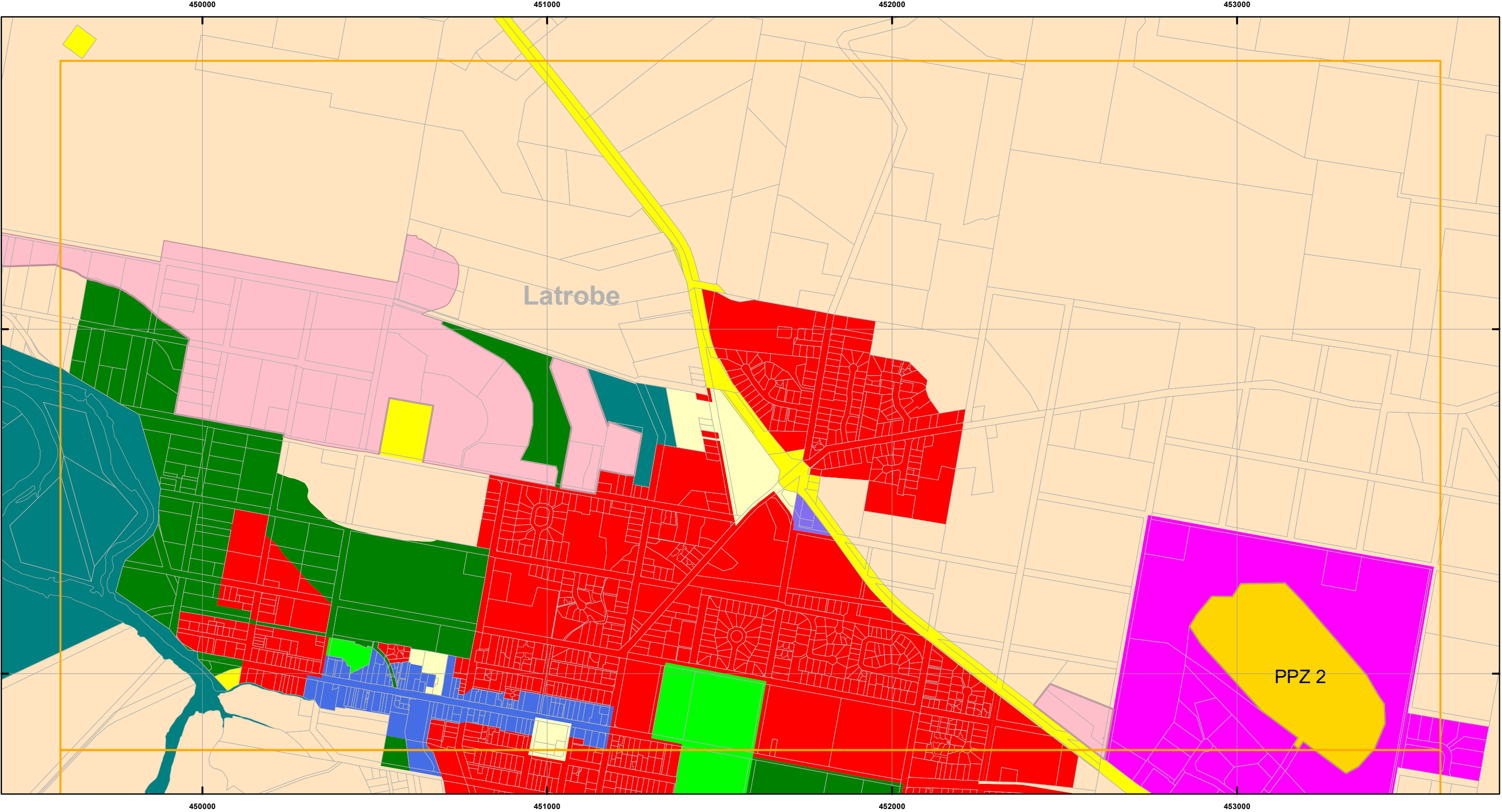
Topographic data from the LIST © State of Tasmania

Print Date: 26/05/2023

LOCATION MAP



LATROBE INTERIM PLANNING SCHEME - 2013 - ZONING

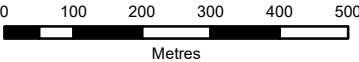


Zones

General Residential	Urban Mixed Use	Local Business	General Industrial	Major Tourism
Inner Residential	Village	General Business	Rural Resource	Port and Marine
Low Density Residential	Community Purpose	Central Business	Significant Agricultural	Particular Purpose
Rural Living	Recreation	Commercial	Utilities	Land Parcels
Environmental Living	Open Space	Light Industrial	Environmental Management	



Map 13 of 14



Coordinate System: GDA 94 MGA Zone 55

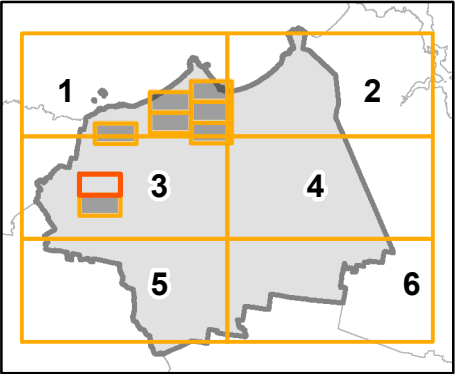
Date of cadastre: 11/05/2023

Zoning data from Latrobe Council
As amended at 20/07/2022

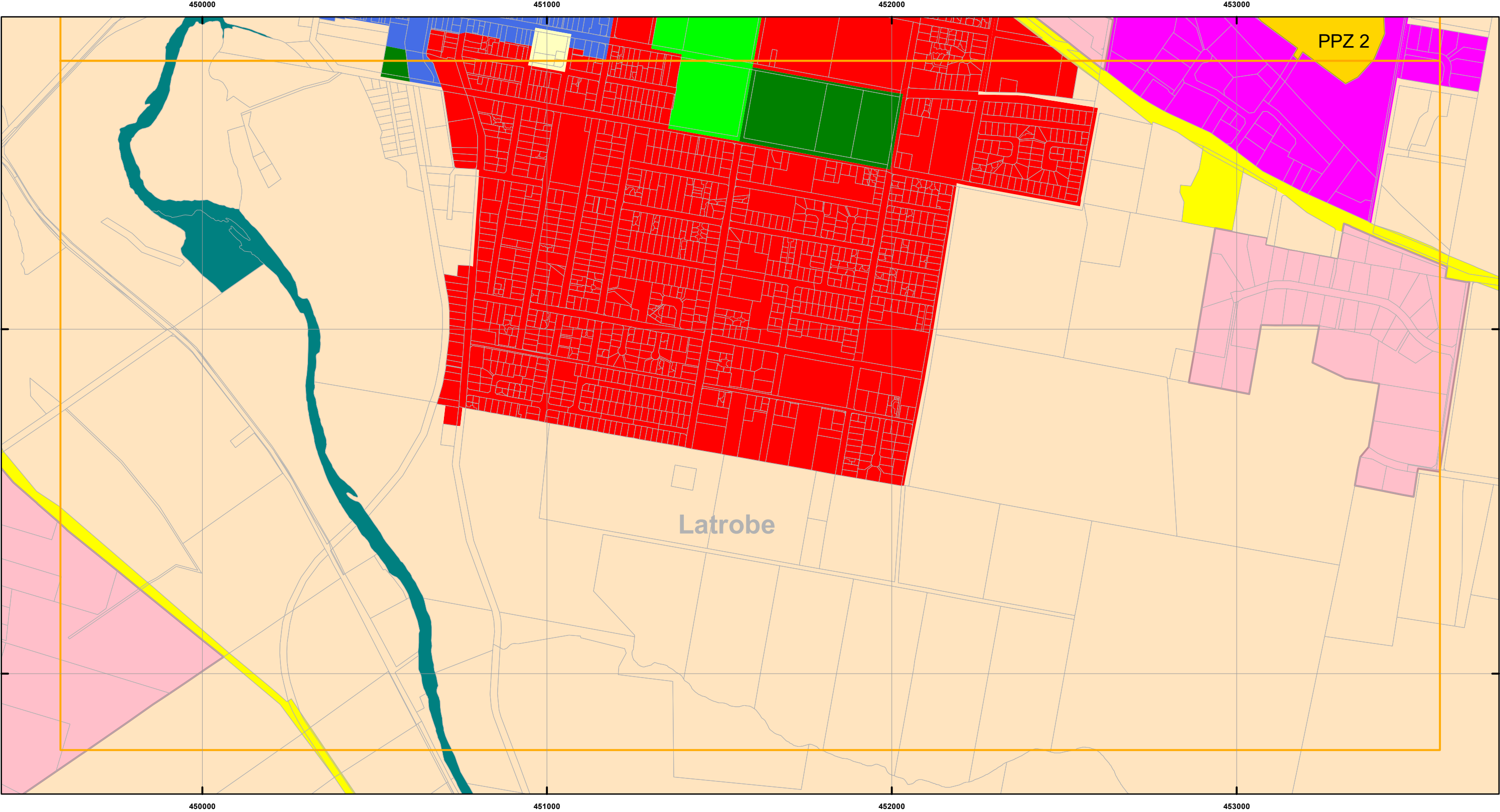
Topographic data from the LIST © State of Tasmania

Print Date: 26/05/2023

LOCATION MAP



LATROBE INTERIM PLANNING SCHEME - 2013 - ZONING

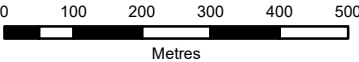


Zones

 General Residential	 Urban Mixed Use	 Local Business	 General Industrial	 Major Tourism
 Inner Residential	 Village	 General Business	 Rural Resource	 Port and Marine
 Low Density Residential	 Community Purpose	 Central Business	 Significant Agricultural	 Particular Purpose
 Rural Living	 Recreation	 Commercial	 Utilities	 Land Parcels
 Environmental Living	 Open Space	 Light Industrial	 Environmental Management	



Map 14 of 14



Coordinate System: GDA 94 MGA Zone 55

Date of cadastre: 11/05/2023

Zoning data from Latrobe Council
As amended at 20/07/2022

Topographic data from the LIST © State of Tasmania

Print Date: 26/05/2023

LOCATION MAP

