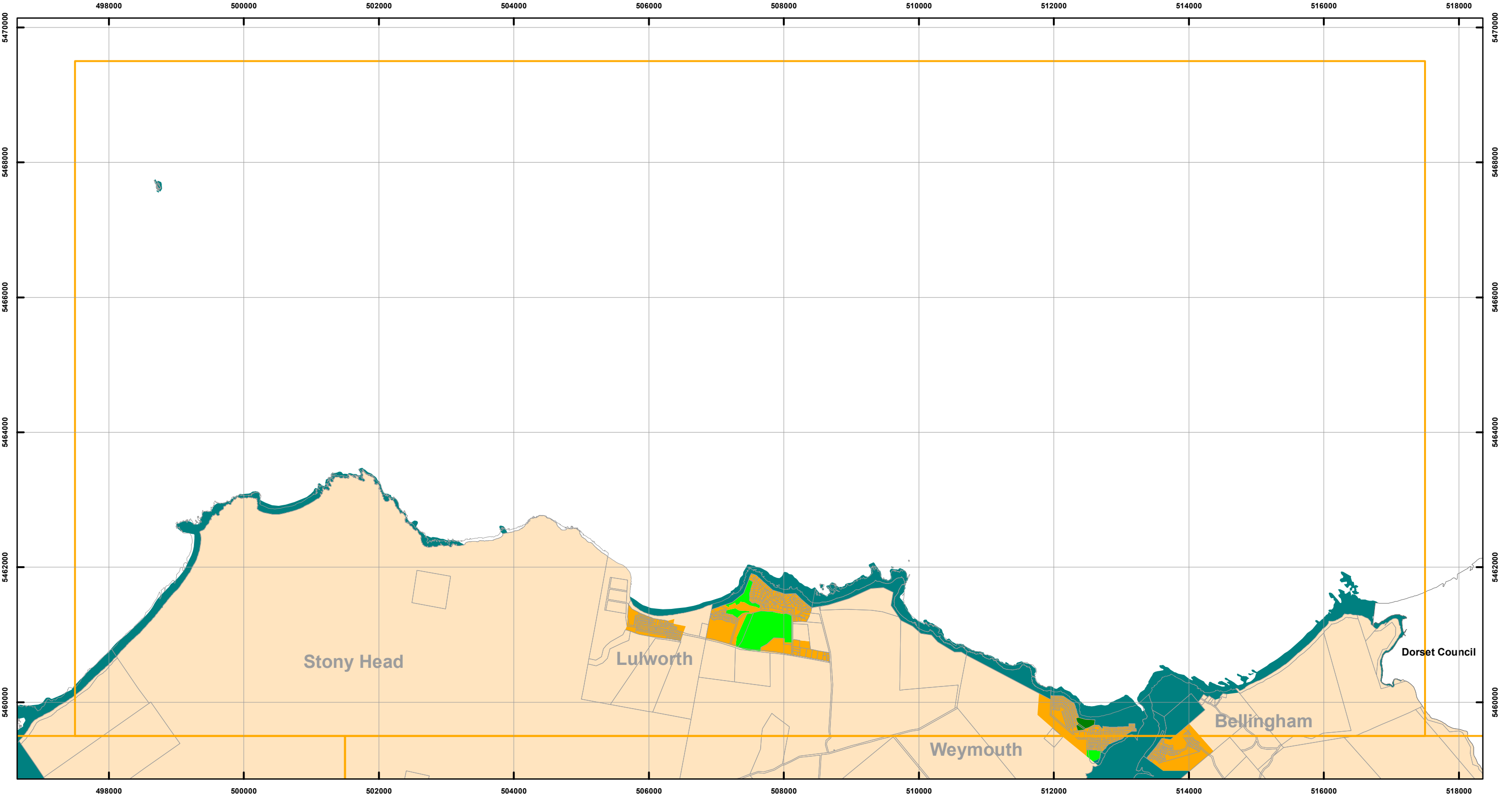


GEORGE TOWN INTERIM PLANNING SCHEME - 2013 - ZONING

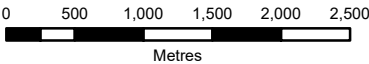


Zones

General Residential	Urban Mixed Use	Local Business	General Industrial	Major Tourism
Inner Residential	Village	General Business	Rural Resource	Port and Marine
Low Density Residential	Community Purpose	Central Business	Significant Agricultural	Particular Purpose
Rural Living	Recreation	Commercial	Utilities	Land parcels
Environmental Living	Open Space	Light Industrial	Environmental Management	



Map 1 of 18



Coordinate System: GDA 94 MGA Zone 55

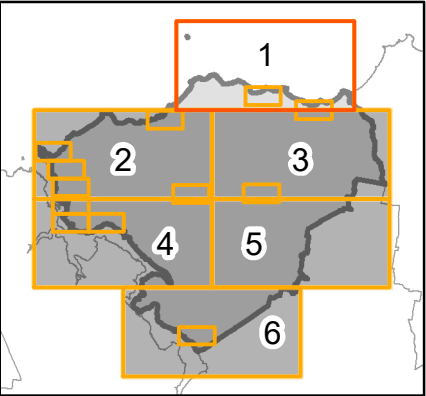
Date of cadastre: 29/08/2023

Zoning data from George Town Council
As amended at 19/07/2023

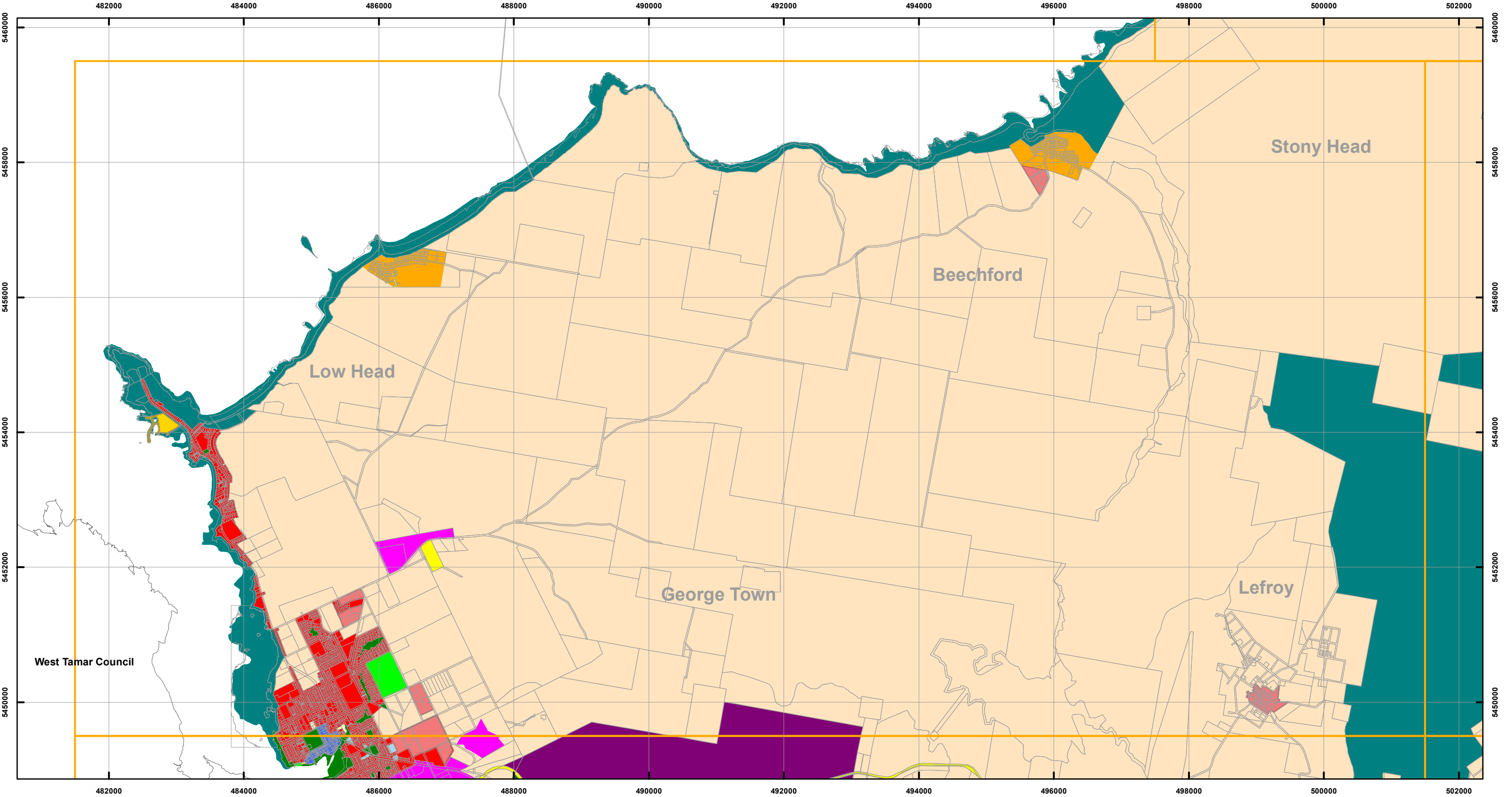
Topographic data from the LIST © State of Tasmania

Print Date: 30/08/2023

LOCATION MAP



GEORGE TOWN INTERIM PLANNING SCHEME - 2013 - ZONING

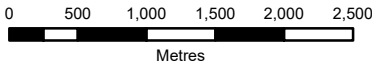


Zones

General Residential	Urban Mixed Use	Local Business	General Industrial	Major Tourism
Inner Residential	Village	General Business	Rural Resource	Port and Marine
Low Density Residential	Community Purpose	Central Business	Significant Agricultural	Particular Purpose
Rural Living	Recreation	Commercial	Utilities	Land parcels
Environmental Living	Open Space	Light Industrial	Environmental Management	



Map 2 of 18



Coordinate System: GDA 94 MGA Zone 55

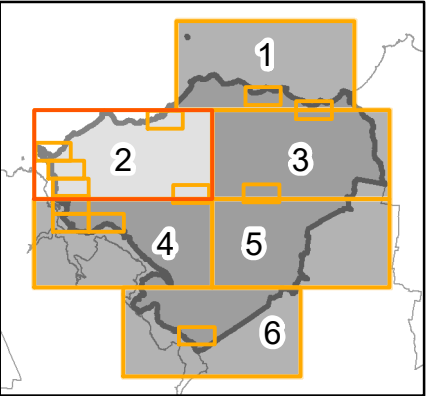
Date of cadastre: 29/08/2023

Zoning data from George Town Council
As amended at 19/07/2023

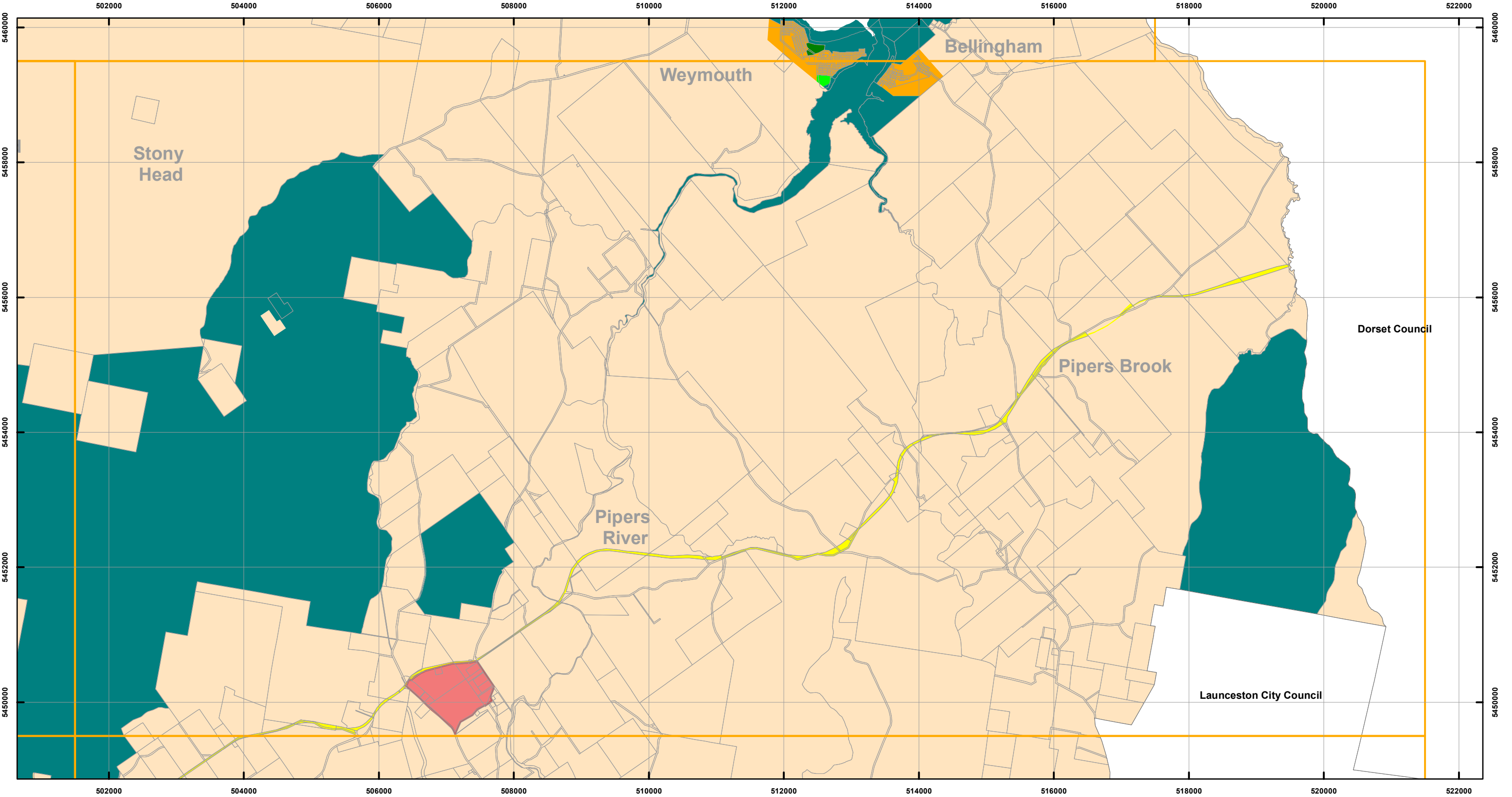
Topographic data from the LIST © State of Tasmania

Print Date: 30/08/2023

LOCATION MAP



GEORGE TOWN INTERIM PLANNING SCHEME - 2013 - ZONING

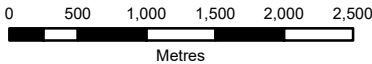


Zones

General Residential	Urban Mixed Use	Local Business	General Industrial	Major Tourism
Inner Residential	Village	General Business	Rural Resource	Port and Marine
Low Density Residential	Community Purpose	Central Business	Significant Agricultural	Particular Purpose
Rural Living	Recreation	Commercial	Utilities	Land parcels
Environmental Living	Open Space	Light Industrial	Environmental Management	



Map 3 of 18



Coordinate System: GDA 94 MGA Zone 55

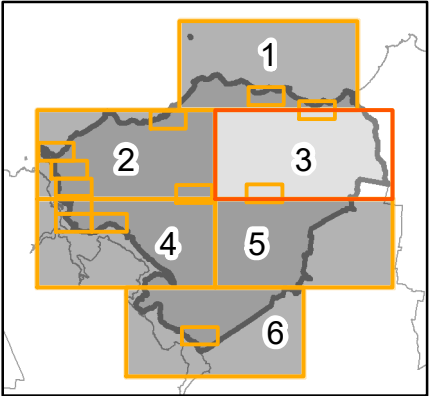
Date of cadastre: 29/08/2023

Zoning data from George Town Council
As amended at 19/07/2023

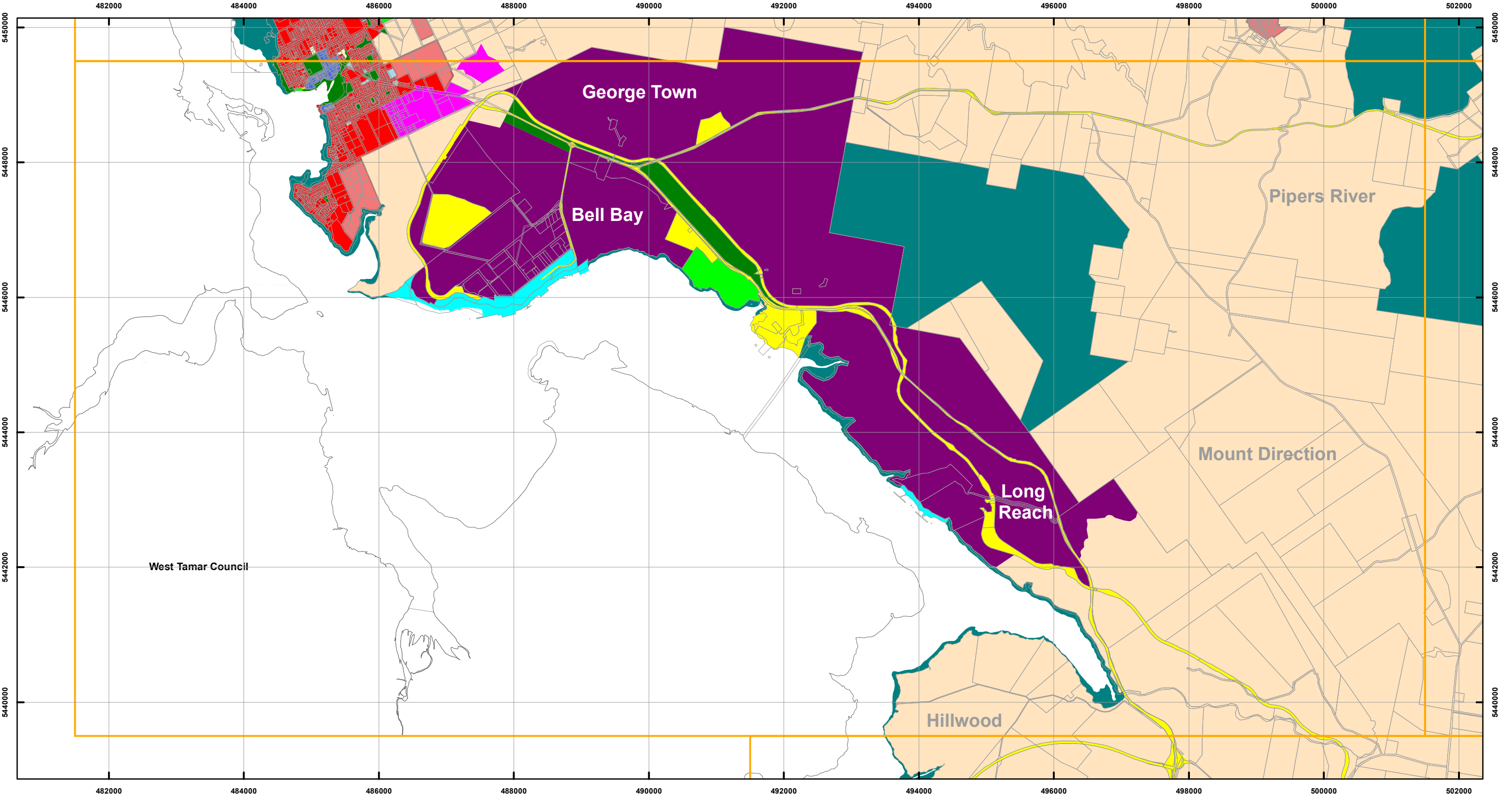
Topographic data from the LIST © State of Tasmania

Print Date: 30/08/2023

LOCATION MAP



GEORGE TOWN INTERIM PLANNING SCHEME - 2013 - ZONING

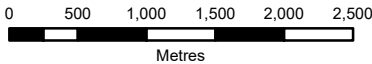


Zones

General Residential	Urban Mixed Use	Local Business	General Industrial	Major Tourism
Inner Residential	Village	General Business	Rural Resource	Port and Marine
Low Density Residential	Community Purpose	Central Business	Significant Agricultural	Particular Purpose
Rural Living	Recreation	Commercial	Utilities	Land parcels
Environmental Living	Open Space	Light Industrial	Environmental Management	



Map 4 of 18



Coordinate System: GDA 94 MGA Zone 55

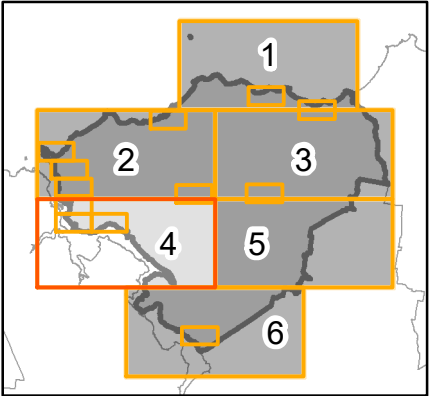
Date of cadastre: 29/08/2023

Zoning data from George Town Council
As amended at 19/07/2023

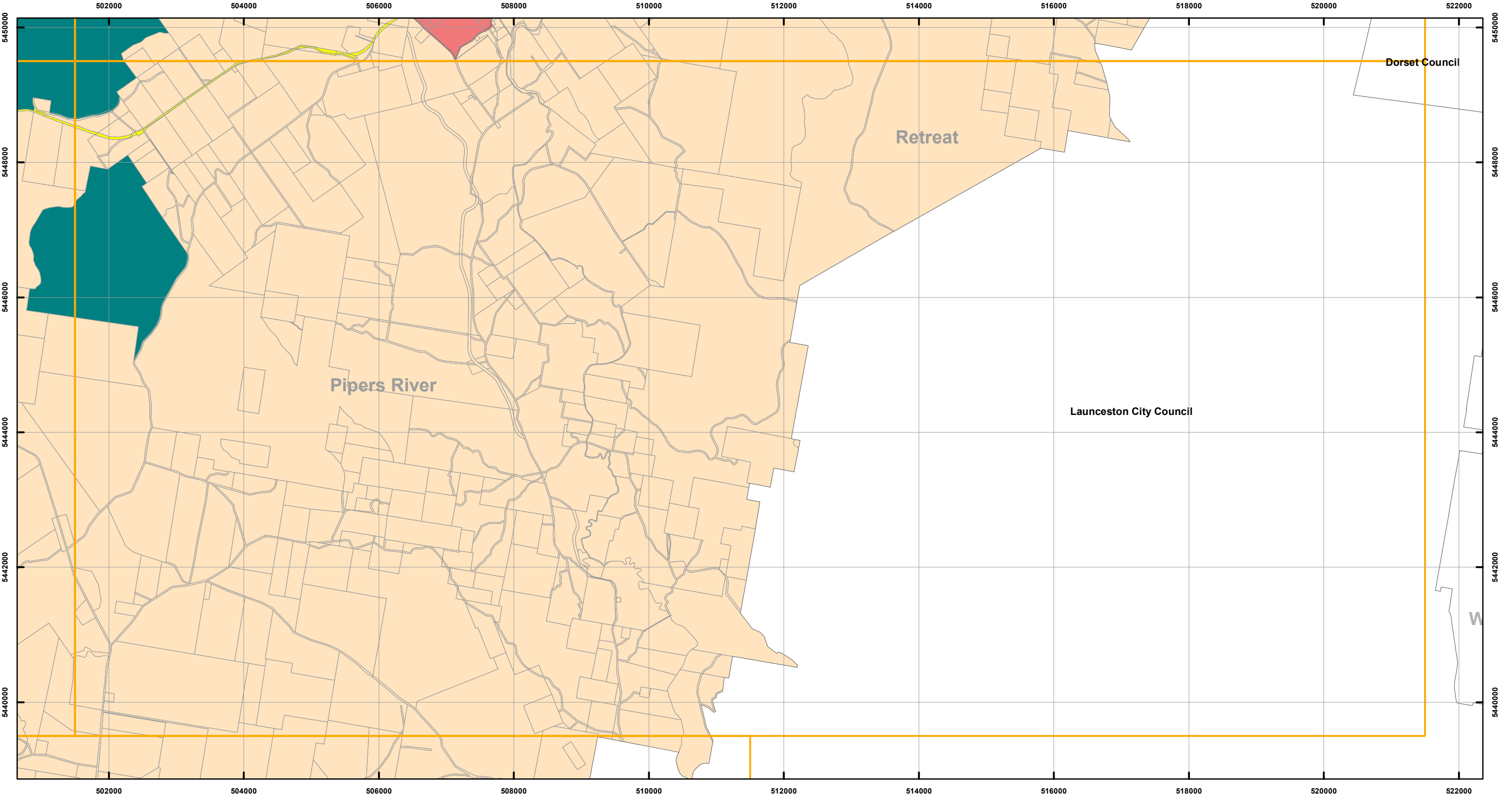
Topographic data from the LIST © State of Tasmania

Print Date: 30/08/2023

LOCATION MAP



GEORGE TOWN INTERIM PLANNING SCHEME - 2013 - ZONING

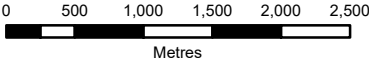


Zones

General Residential	Urban Mixed Use	Local Business	General Industrial	Major Tourism
Inner Residential	Village	General Business	Rural Resource	Port and Marine
Low Density Residential	Community Purpose	Central Business	Significant Agricultural	Particular Purpose
Rural Living	Recreation	Commercial	Utilities	Land parcels
Environmental Living	Open Space	Light Industrial	Environmental Management	



Map 5 of 18



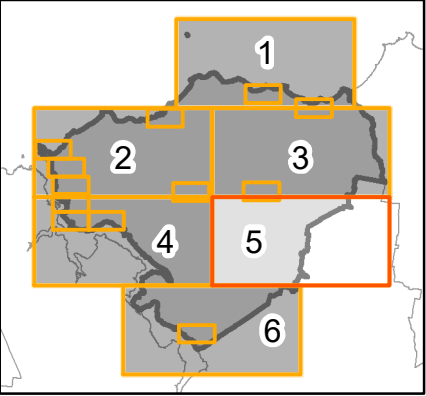
Coordinate System: GDA 94 MGA Zone 55

Date of cadastre: 29/08/2023

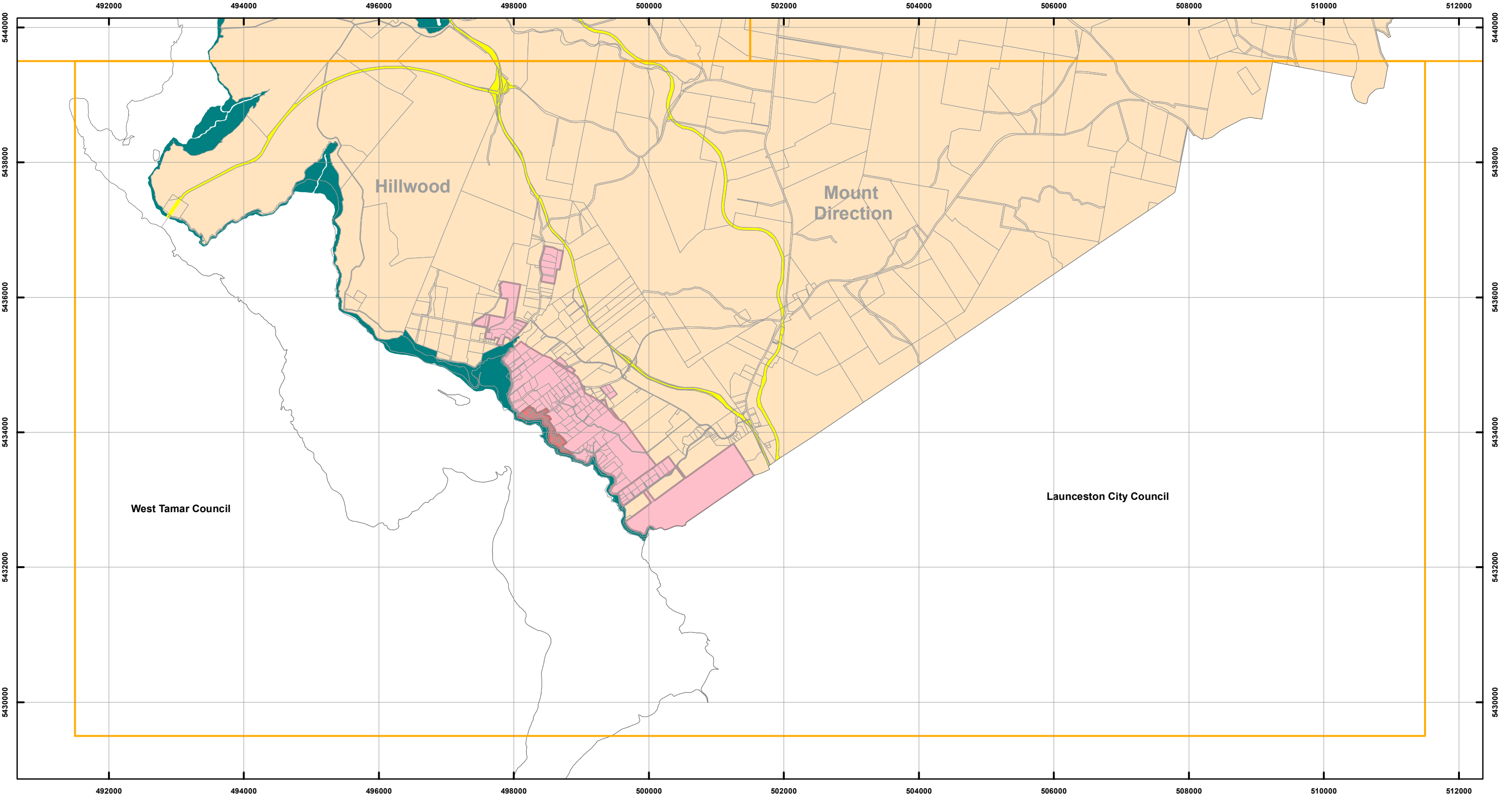
Zoning data from George Town Council
As amended at 19/07/2023
Topographic data from the LIST © State of Tasmania

Print Date: 30/08/2023

LOCATION MAP



GEORGE TOWN INTERIM PLANNING SCHEME - 2013 - ZONING

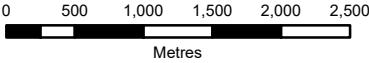


Zones

General Residential	Urban Mixed Use	Local Business	General Industrial	Major Tourism
Inner Residential	Village	General Business	Rural Resource	Port and Marine
Low Density Residential	Community Purpose	Central Business	Significant Agricultural	Particular Purpose
Rural Living	Recreation	Commercial	Utilities	Land parcels
Environmental Living	Open Space	Light Industrial	Environmental Management	



Map 6 of 18



Coordinate System: GDA 94 MGA Zone 55

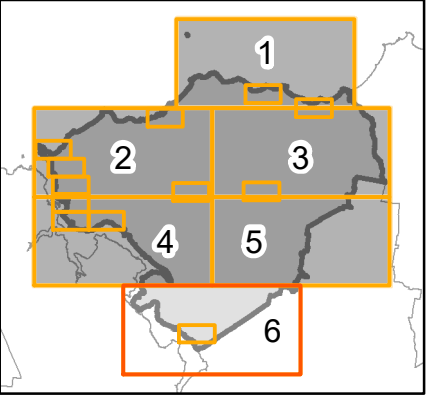
Date of cadastre: 29/08/2023

Zoning data from George Town Council
As amended at 19/07/2023

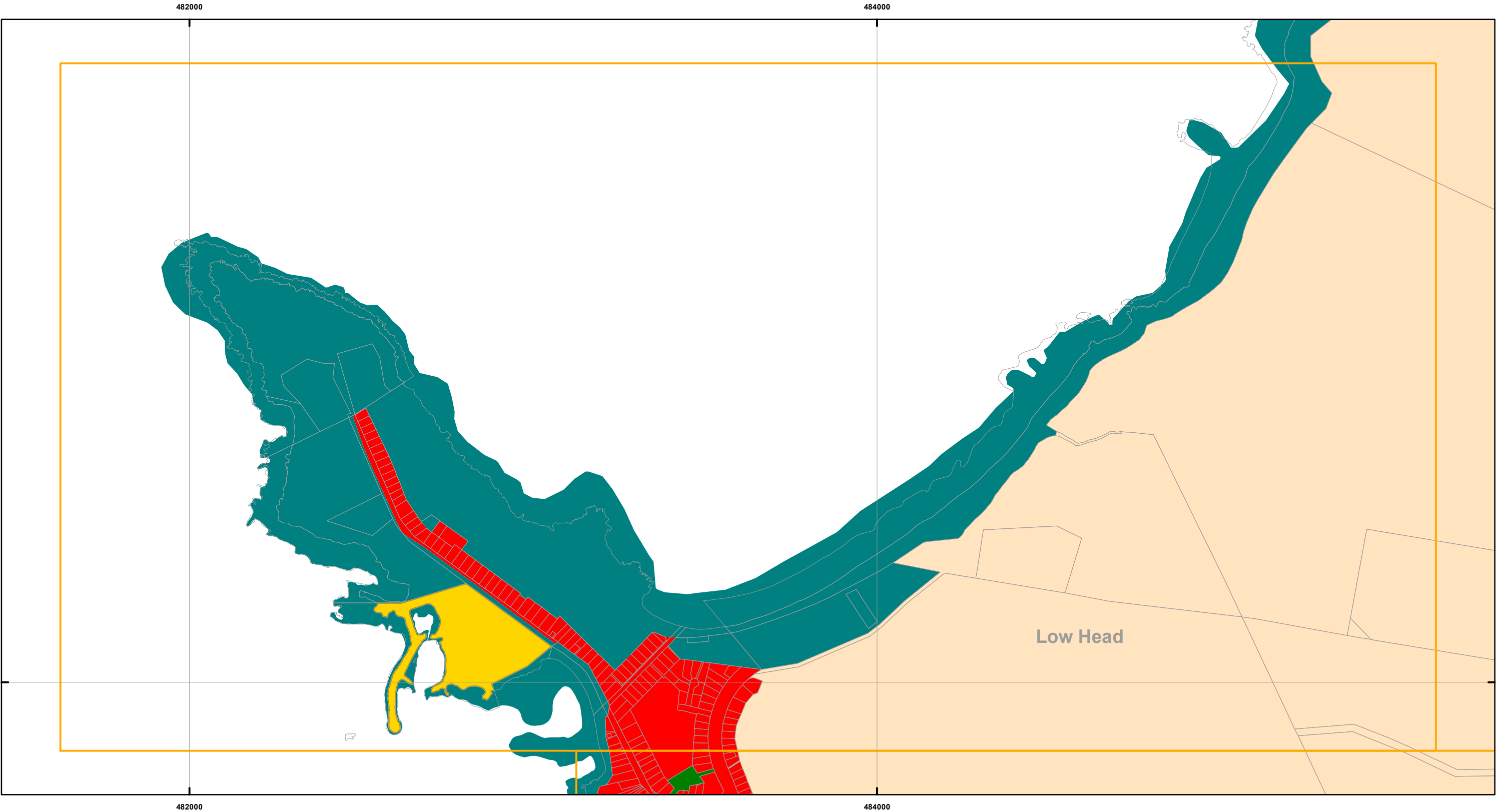
Topographic data from the LIST © State of Tasmania

Print Date: 30/08/2023

LOCATION MAP



GEORGE TOWN INTERIM PLANNING SCHEME - 2013 - ZONING

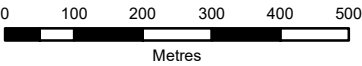


Zones

General Residential	Urban Mixed Use	Local Business	General Industrial	Major Tourism
Inner Residential	Village	General Business	Rural Resource	Port and Marine
Low Density Residential	Community Purpose	Central Business	Significant Agricultural	Particular Purpose
Rural Living	Recreation	Commercial	Utilities	Land parcels
Environmental Living	Open Space	Light Industrial	Environmental Management	



Map 7 of 18



Coordinate System: GDA 94 MGA Zone 55

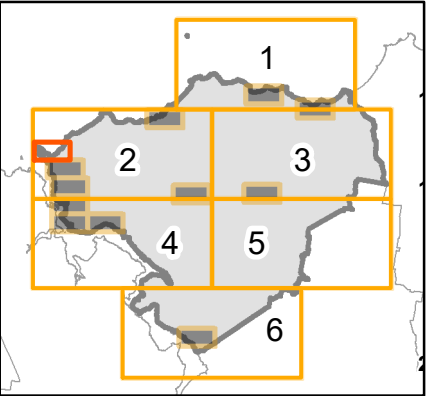
Date of cadastre: 29/08/2023

Zoning data from George Town Council
As amended at 19/07/2023

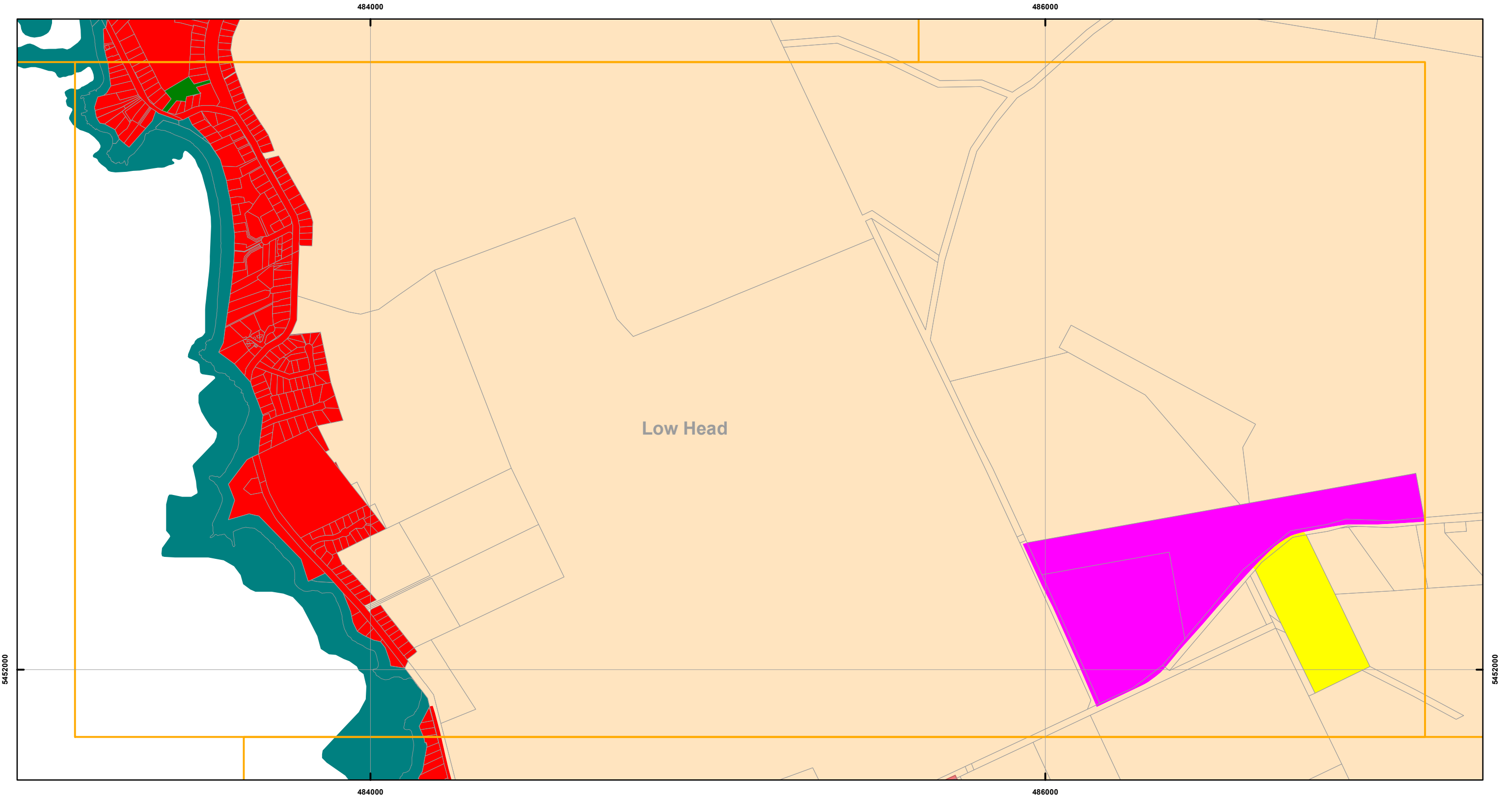
Topographic data from the LIST © State of Tasmania

Print Date: 30/08/2023

LOCATION MAP



GEORGE TOWN INTERIM PLANNING SCHEME - 2013 - ZONING

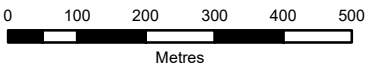


Zones

General Residential	Urban Mixed Use	Local Business	General Industrial	Major Tourism
Inner Residential	Village	General Business	Rural Resource	Port and Marine
Low Density Residential	Community Purpose	Central Business	Significant Agricultural	Particular Purpose
Rural Living	Recreation	Commercial	Utilities	Land parcels
Environmental Living	Open Space	Light Industrial	Environmental Management	



Map 8 of 18



Coordinate System: GDA 94 MGA Zone 55

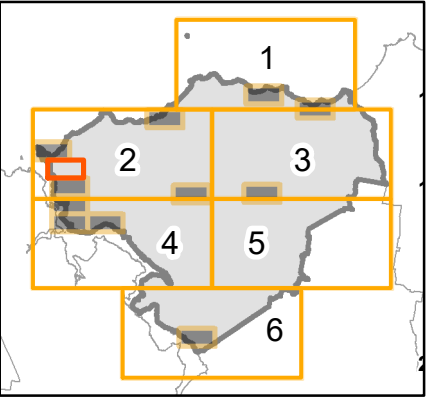
Date of cadastre: 29/08/2023

Zoning data from George Town Council
As amended at 19/07/2023

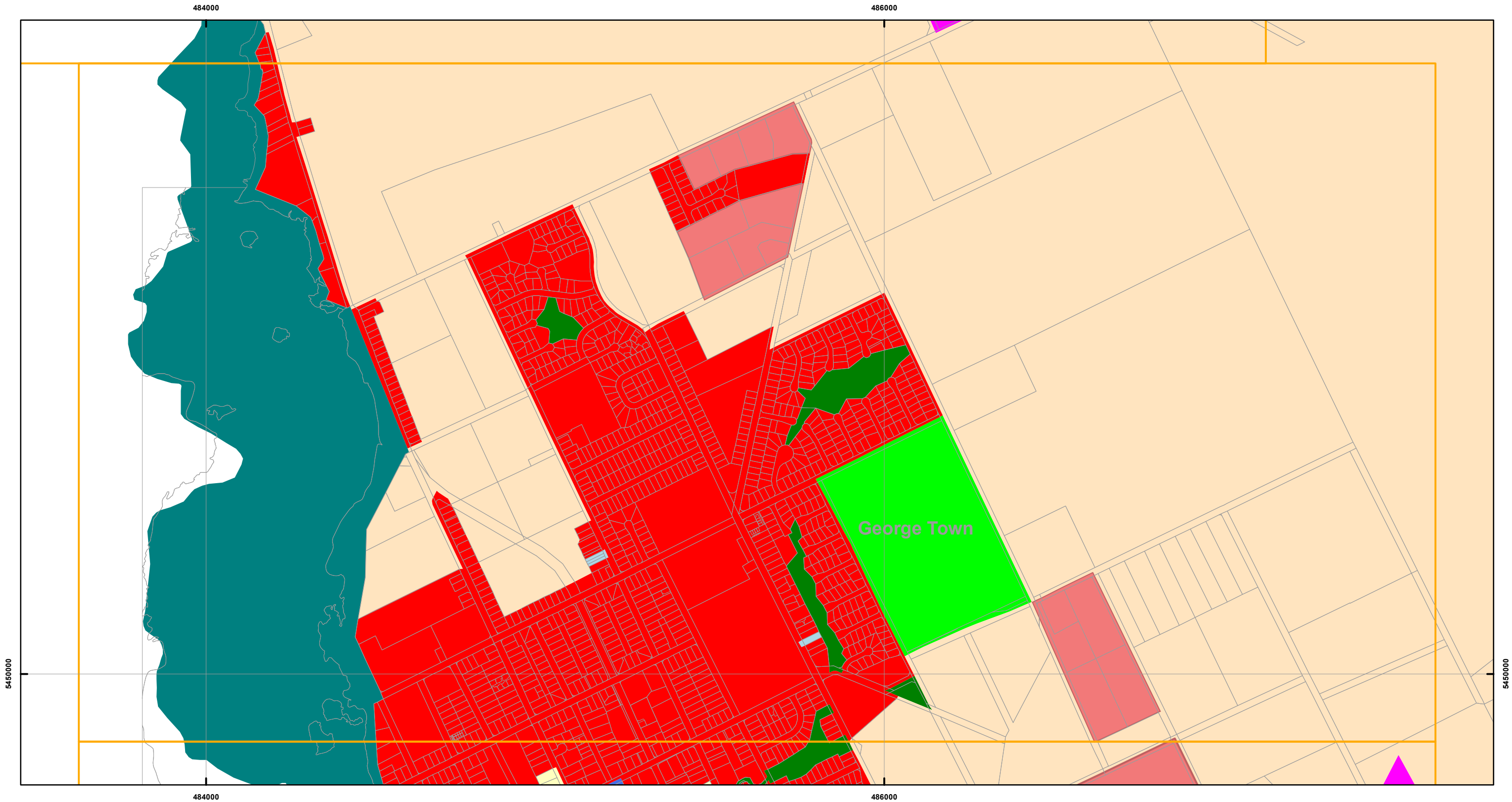
Topographic data from the LIST © State of Tasmania

Print Date: 30/08/2023

LOCATION MAP



GEORGE TOWN INTERIM PLANNING SCHEME - 2013 - ZONING

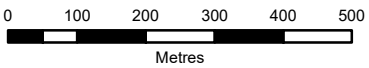


Zones

General Residential	Urban Mixed Use	Local Business	General Industrial	Major Tourism
Inner Residential	Village	General Business	Rural Resource	Port and Marine
Low Density Residential	Community Purpose	Central Business	Significant Agricultural	Particular Purpose
Rural Living	Recreation	Commercial	Utilities	Land parcels
Environmental Living	Open Space	Light Industrial	Environmental Management	



Map 9 of 18



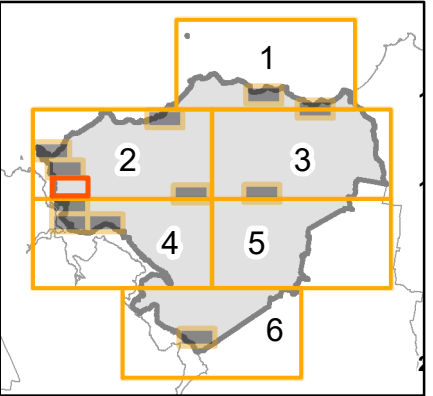
Coordinate System: GDA 94 MGA Zone 55

Date of cadastre: 29/08/2023

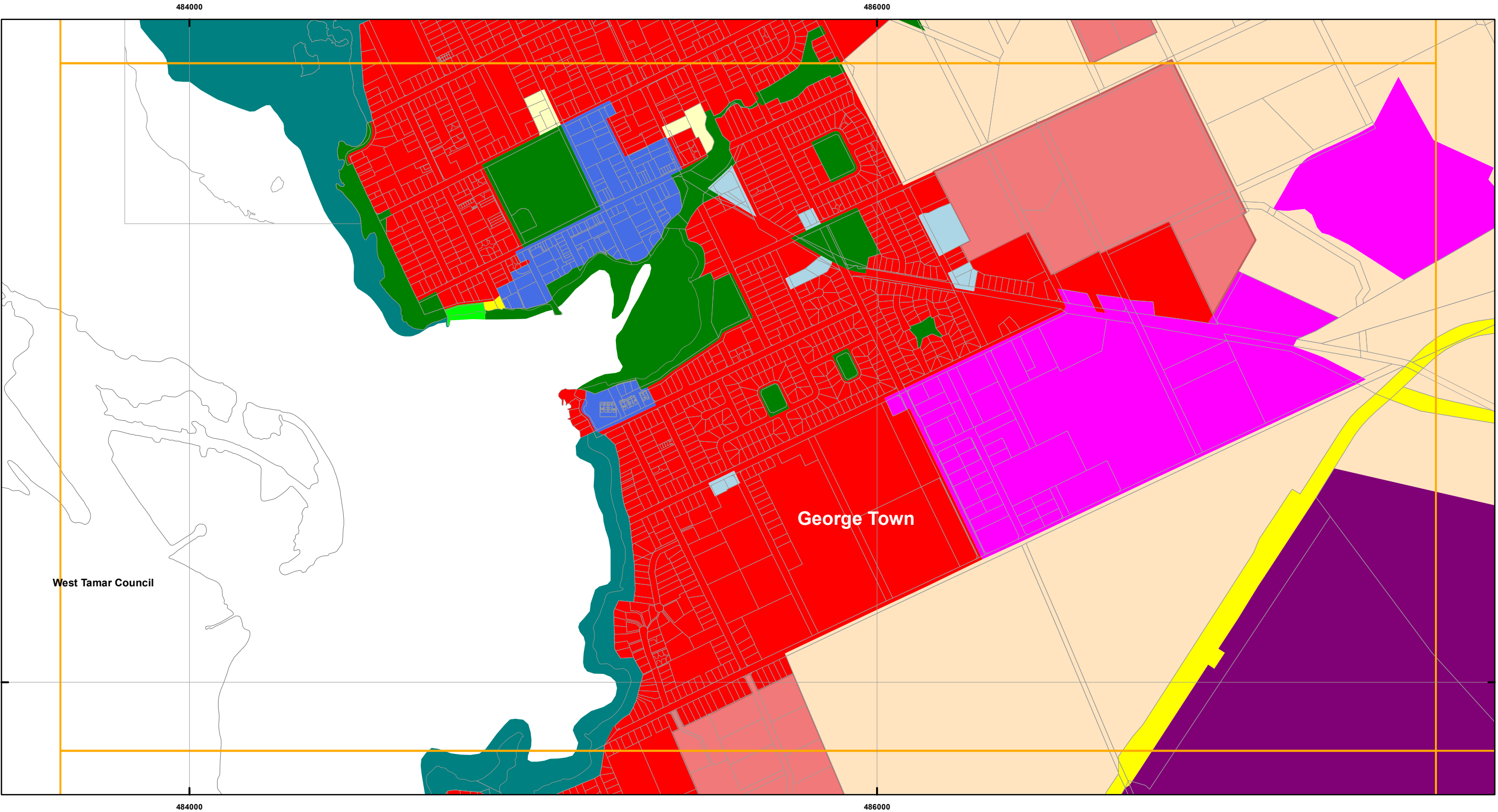
Zoning data from George Town Council
As amended at 19/07/2023
Topographic data from the LIST © State of Tasmania

Print Date: 30/08/2023

LOCATION MAP



GEORGE TOWN INTERIM PLANNING SCHEME - 2013 - ZONING

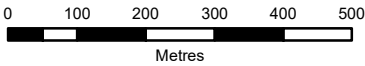


Zones

General Residential	Urban Mixed Use	Local Business	General Industrial	Major Tourism
Inner Residential	Village	General Business	Rural Resource	Port and Marine
Low Density Residential	Community Purpose	Central Business	Significant Agricultural	Particular Purpose
Rural Living	Recreation	Commercial	Utilities	Land parcels
Environmental Living	Open Space	Light Industrial	Environmental Management	



Map 10 of 18



Coordinate System: GDA 94 MGA Zone 55

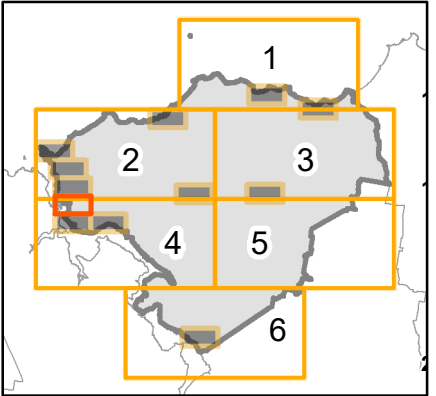
Date of cadastre: 29/08/2023

Zoning data from George Town Council
As amended at 19/07/2023

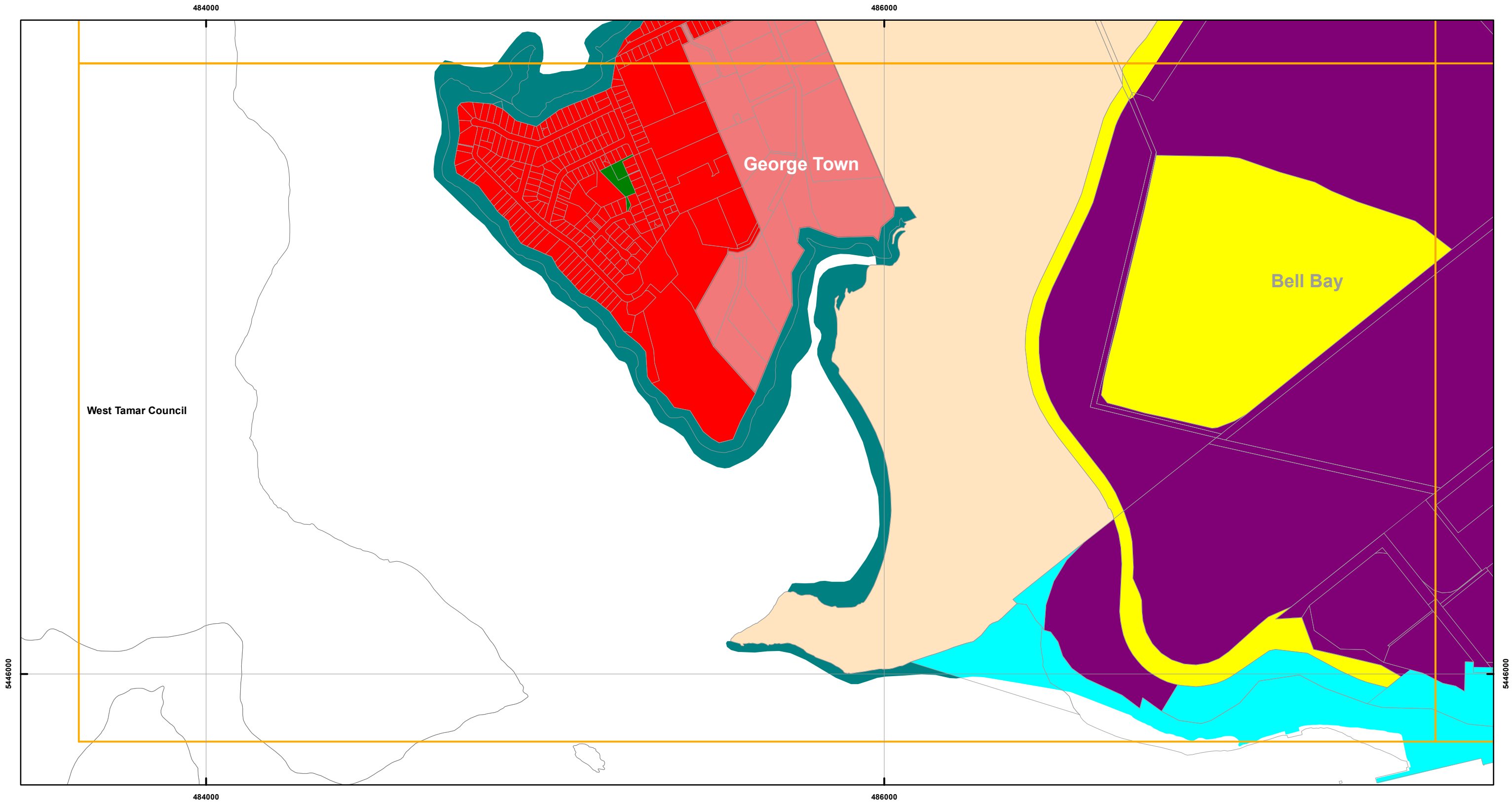
Topographic data from the LIST © State of Tasmania

Print Date: 30/08/2023

LOCATION MAP



GEORGE TOWN INTERIM PLANNING SCHEME - 2013 - ZONING

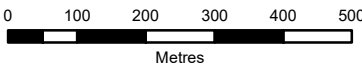


Zones

General Residential	Urban Mixed Use	Local Business	General Industrial	Major Tourism
Inner Residential	Village	General Business	Rural Resource	Port and Marine
Low Density Residential	Community Purpose	Central Business	Significant Agricultural	Particular Purpose
Rural Living	Recreation	Commercial	Utilities	Land parcels
Environmental Living	Open Space	Light Industrial	Environmental Management	



Map 11 of 18



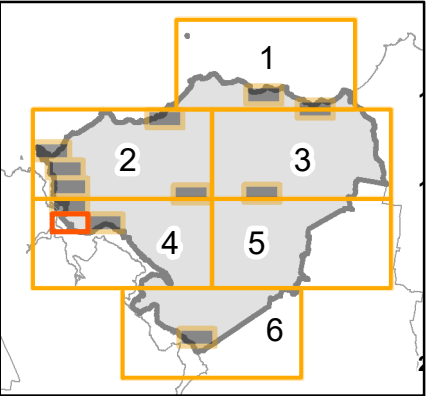
Coordinate System: GDA 94 MGA Zone 55

Date of cadastre: 29/08/2023

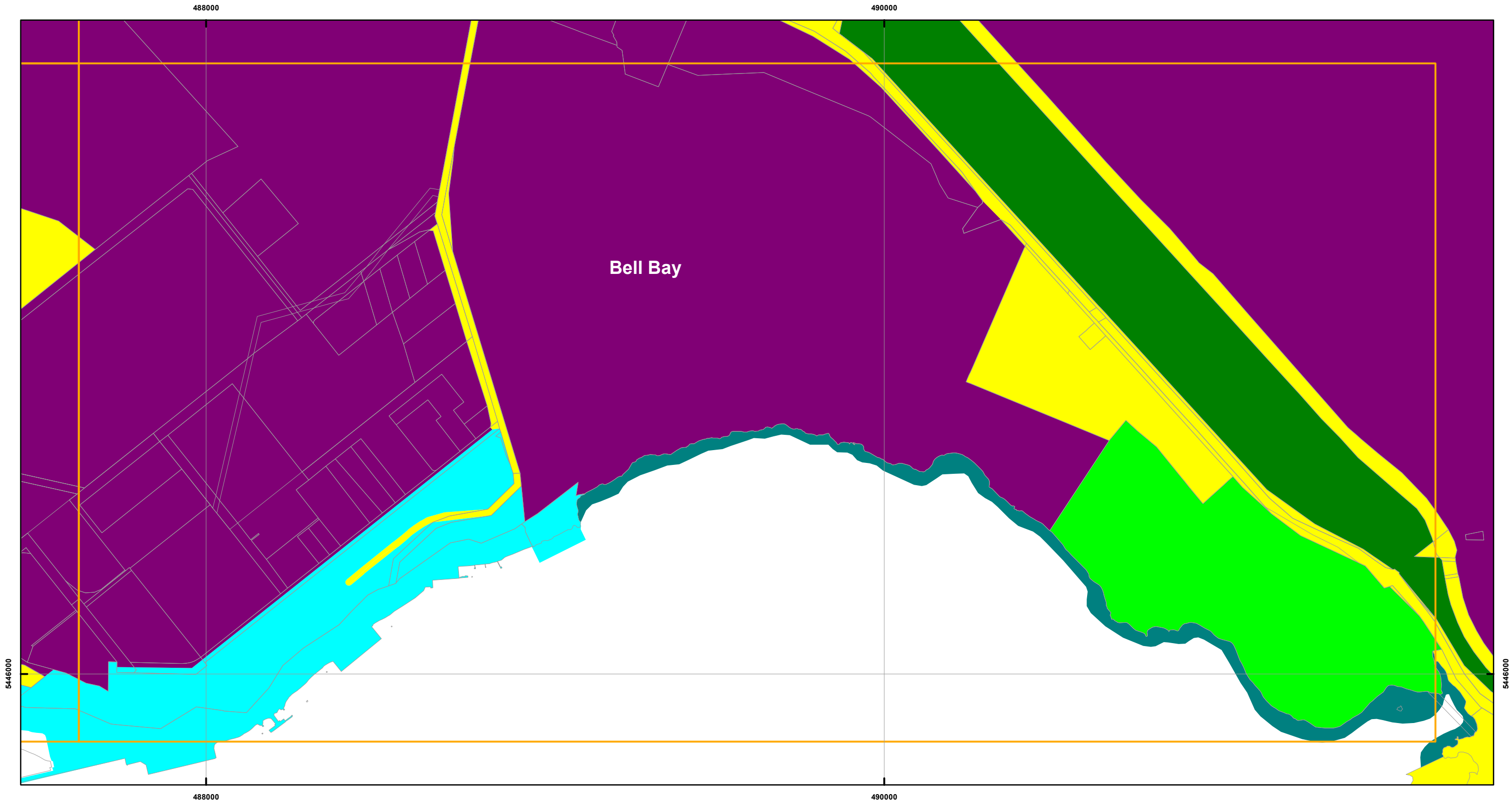
Zoning data from George Town Council
As amended at 19/07/2023
Topographic data from the LIST © State of Tasmania

Print Date: 30/08/2023

LOCATION MAP



GEORGE TOWN INTERIM PLANNING SCHEME - 2013 - ZONING

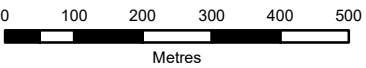


Zones

General Residential	Urban Mixed Use	Local Business	General Industrial	Major Tourism
Inner Residential	Village	General Business	Rural Resource	Port and Marine
Low Density Residential	Community Purpose	Central Business	Significant Agricultural	Particular Purpose
Rural Living	Recreation	Commercial	Utilities	Land parcels
Environmental Living	Open Space	Light Industrial	Environmental Management	



Map 12 of 18



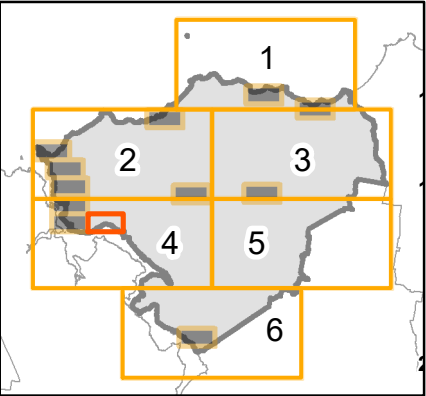
Coordinate System: GDA 94 MGA Zone 55

Date of cadastre: 29/08/2023

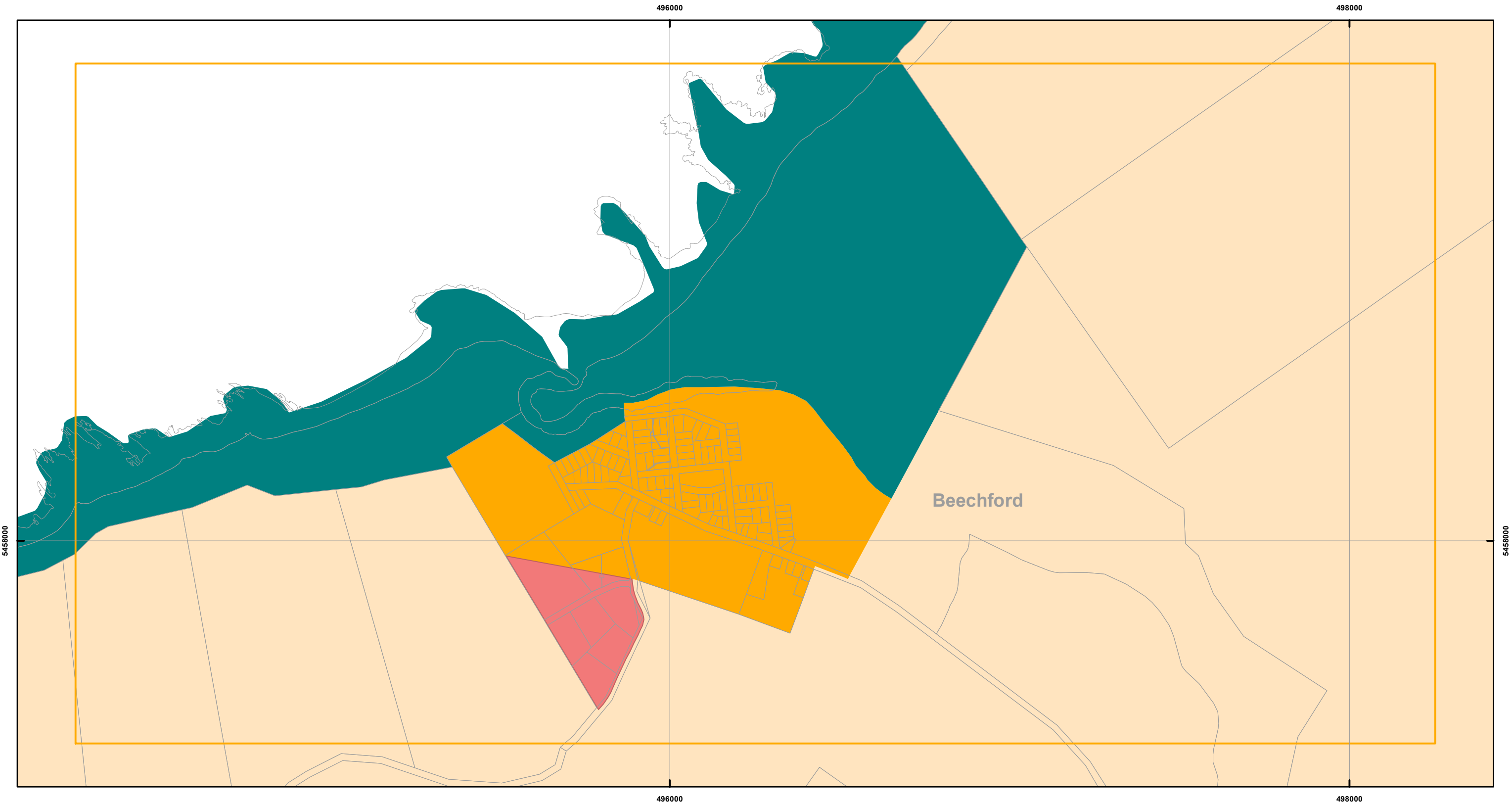
Zoning data from George Town Council
As amended at 19/07/2023
Topographic data from the LIST © State of Tasmania

Print Date: 30/08/2023

LOCATION MAP



GEORGE TOWN INTERIM PLANNING SCHEME - 2013 - ZONING

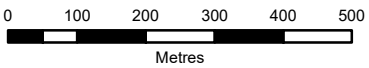


Zones

General Residential	Urban Mixed Use	Local Business	General Industrial	Major Tourism
Inner Residential	Village	General Business	Rural Resource	Port and Marine
Low Density Residential	Community Purpose	Central Business	Significant Agricultural	Particular Purpose
Rural Living	Recreation	Commercial	Utilities	Land parcels
Environmental Living	Open Space	Light Industrial	Environmental Management	



Map 13 of 18



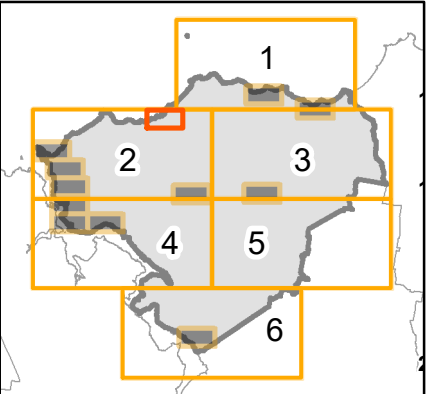
Coordinate System: GDA 94 MGA Zone 55

Date of cadastre: 29/08/2023

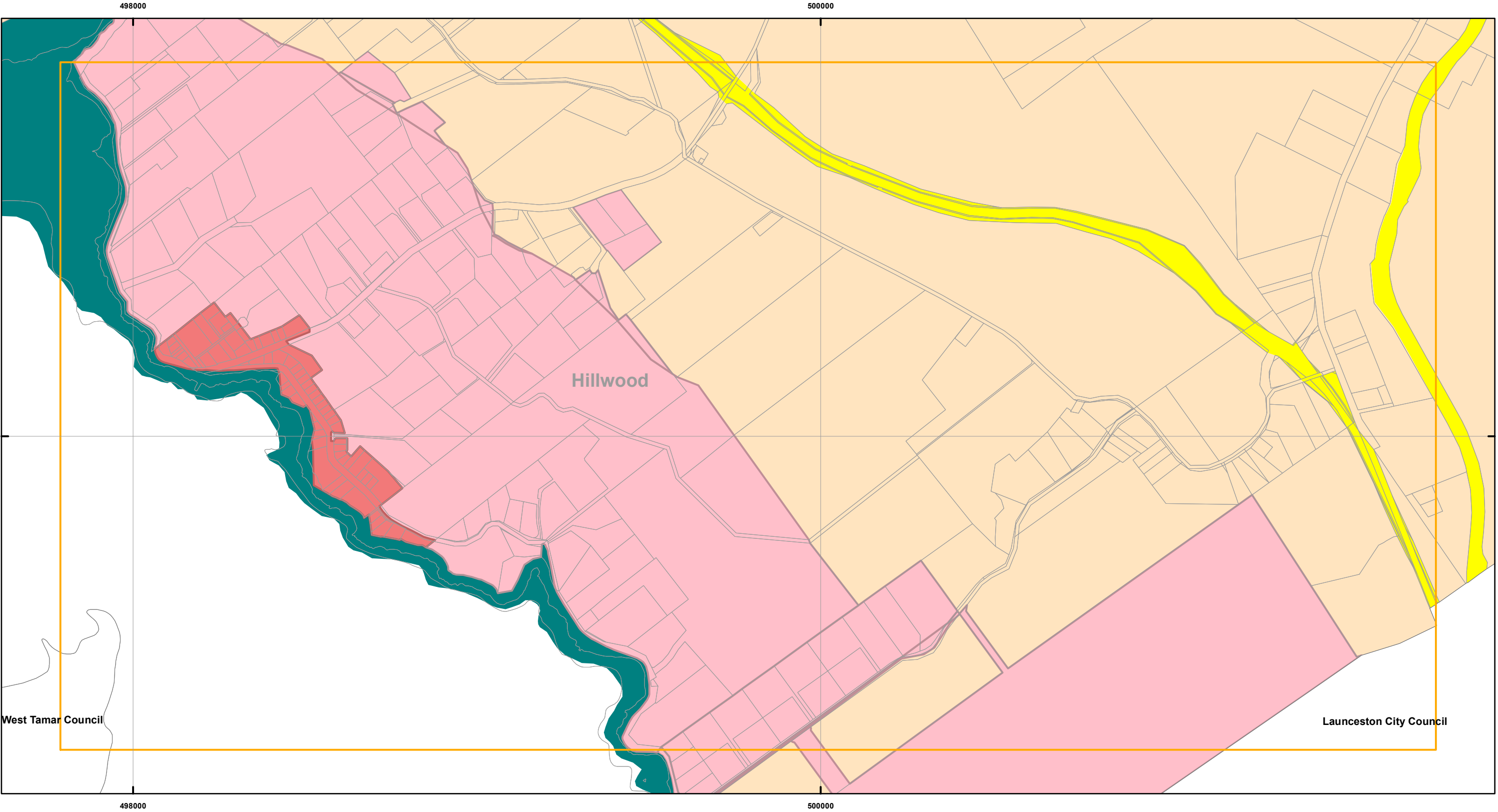
Zoning data from George Town Council
As amended at 19/07/2023
Topographic data from the LIST © State of Tasmania

Print Date: 30/08/2023

LOCATION MAP



GEORGE TOWN INTERIM PLANNING SCHEME - 2013 - ZONING

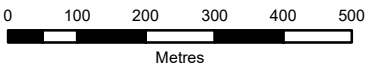


Zones

General Residential	Urban Mixed Use	Local Business	General Industrial	Major Tourism
Inner Residential	Village	General Business	Rural Resource	Port and Marine
Low Density Residential	Community Purpose	Central Business	Significant Agricultural	Particular Purpose
Rural Living	Recreation	Commercial	Utilities	Land parcels
Environmental Living	Open Space	Light Industrial	Environmental Management	



Map 14 of 18



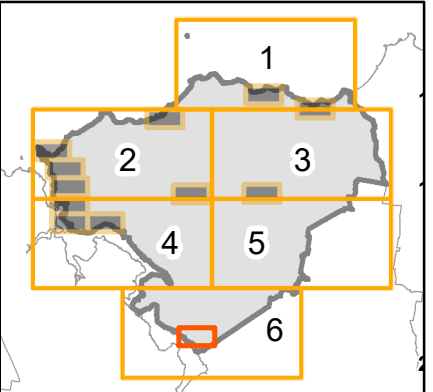
Coordinate System: GDA 94 MGA Zone 55

Date of cadastre: 29/08/2023

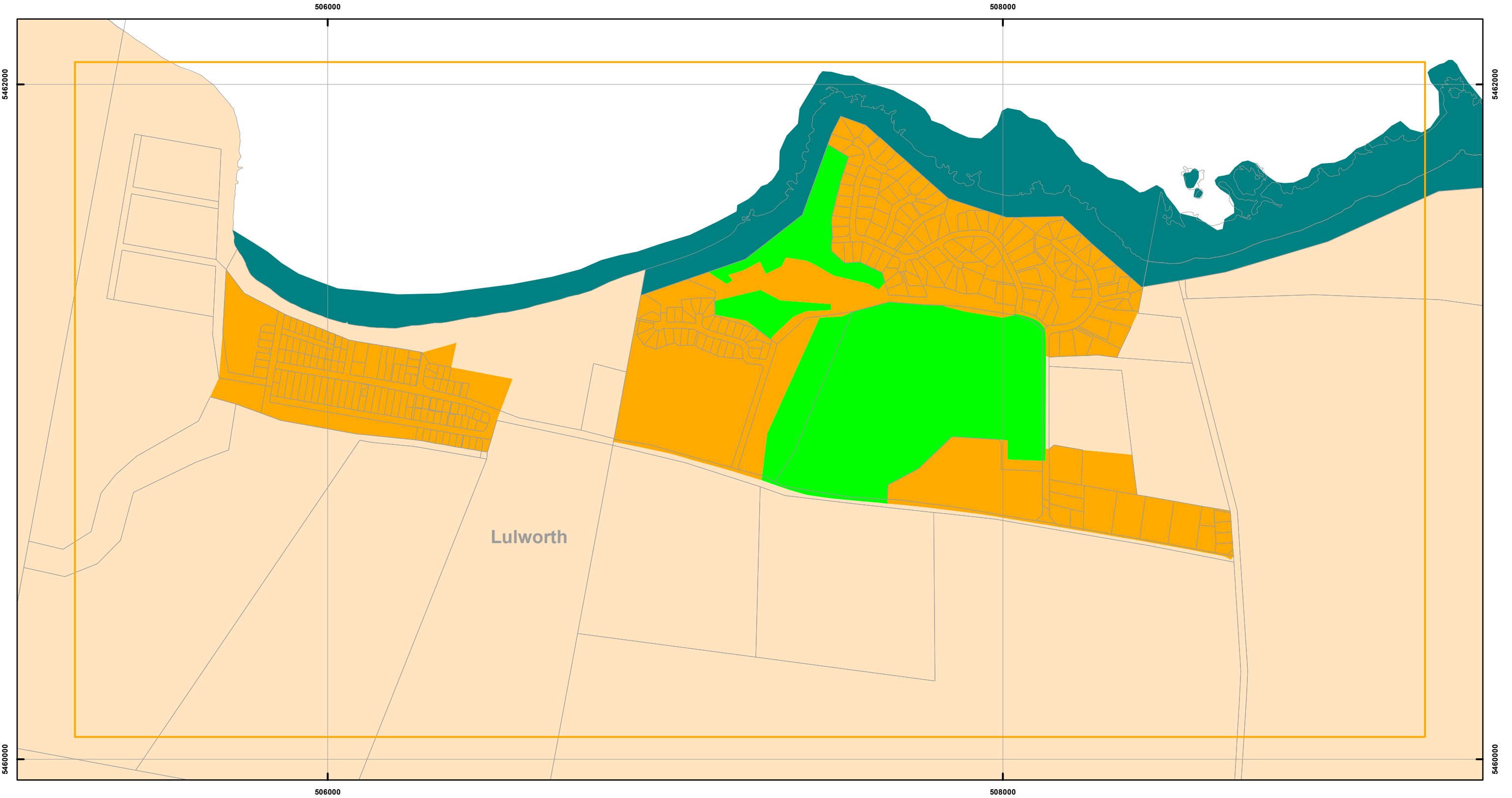
Zoning data from George Town Council
As amended at 19/07/2023
Topographic data from the LIST © State of Tasmania

Print Date: 30/08/2023

LOCATION MAP



GEORGE TOWN INTERIM PLANNING SCHEME - 2013 - ZONING

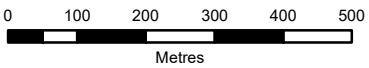


Zones

General Residential	Urban Mixed Use	Local Business	General Industrial	Major Tourism
Inner Residential	Village	General Business	Rural Resource	Port and Marine
Low Density Residential	Community Purpose	Central Business	Significant Agricultural	Particular Purpose
Rural Living	Recreation	Commercial	Utilities	Land parcels
Environmental Living	Open Space	Light Industrial	Environmental Management	



Map 15 of 18



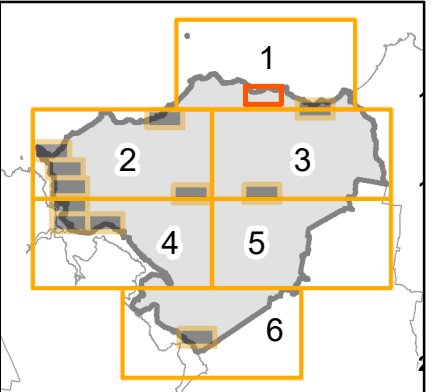
Coordinate System: GDA 94 MGA Zone 55

Date of cadastre: 29/08/2023

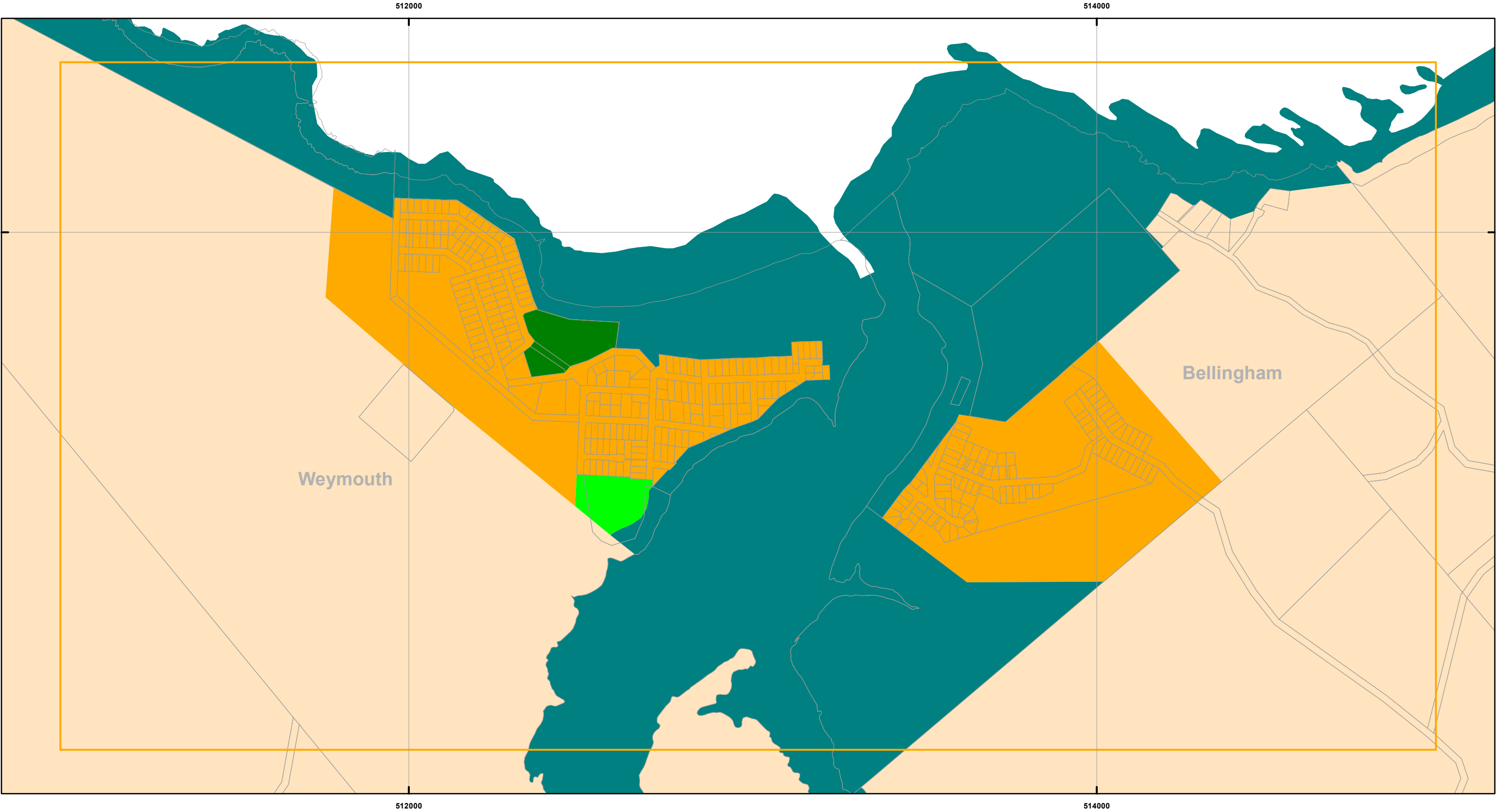
Zoning data from George Town Council
As amended at 19/07/2023
Topographic data from the LIST © State of Tasmania

Print Date: 30/08/2023

LOCATION MAP



GEORGE TOWN INTERIM PLANNING SCHEME - 2013 - ZONING

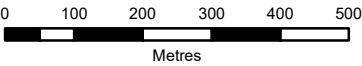


Zones

 General Residential	 Urban Mixed Use	 Local Business	 General Industrial	 Major Tourism
 Inner Residential	 Village	 General Business	 Rural Resource	 Port and Marine
 Low Density Residential	 Community Purpose	 Central Business	 Significant Agricultural	 Particular Purpose
 Rural Living	 Recreation	 Commercial	 Utilities	 Land parcels
 Environmental Living	 Open Space	 Light Industrial	 Environmental Management	



Map 16 of 18



Coordinate System: GDA 94 MGA Zone 55

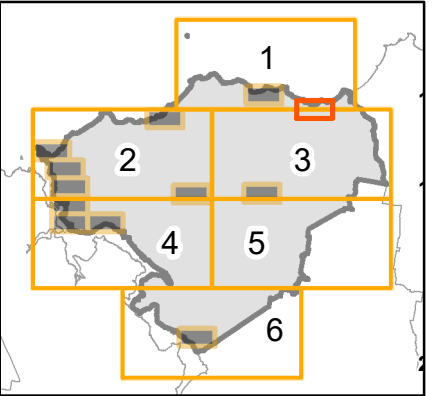
Date of cadastre: 29/08/2023

Zoning data from George Town Council
As amended at 19/07/2023

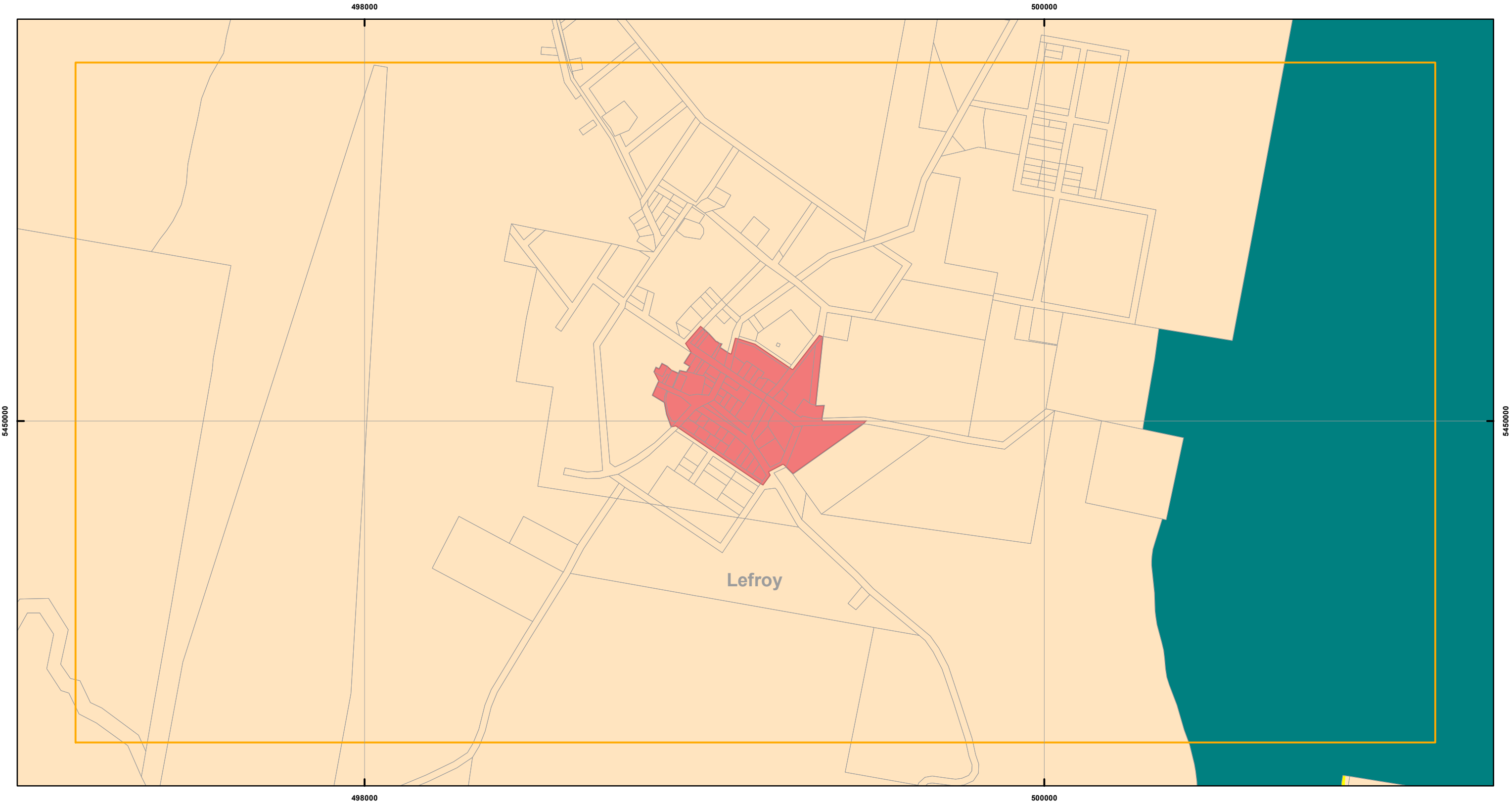
Topographic data from the LIST © State of Tasmania

Print Date: 30/08/2023

LOCATION MAP



GEORGE TOWN INTERIM PLANNING SCHEME - 2013 - ZONING

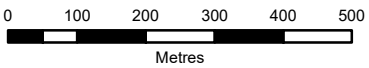


Zones

General Residential	Urban Mixed Use	Local Business	General Industrial	Major Tourism
Inner Residential	Village	General Business	Rural Resource	Port and Marine
Low Density Residential	Community Purpose	Central Business	Significant Agricultural	Particular Purpose
Rural Living	Recreation	Commercial	Utilities	Land parcels
Environmental Living	Open Space	Light Industrial	Environmental Management	



Map 17 of 18



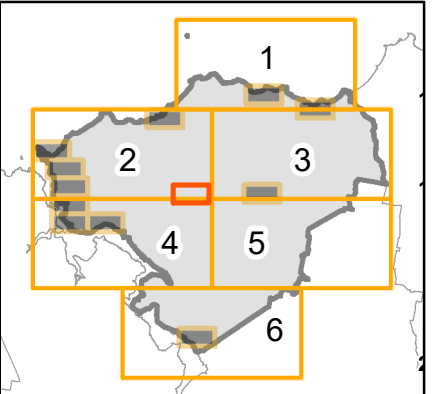
Coordinate System: GDA 94 MGA Zone 55

Date of cadastre: 29/08/2023

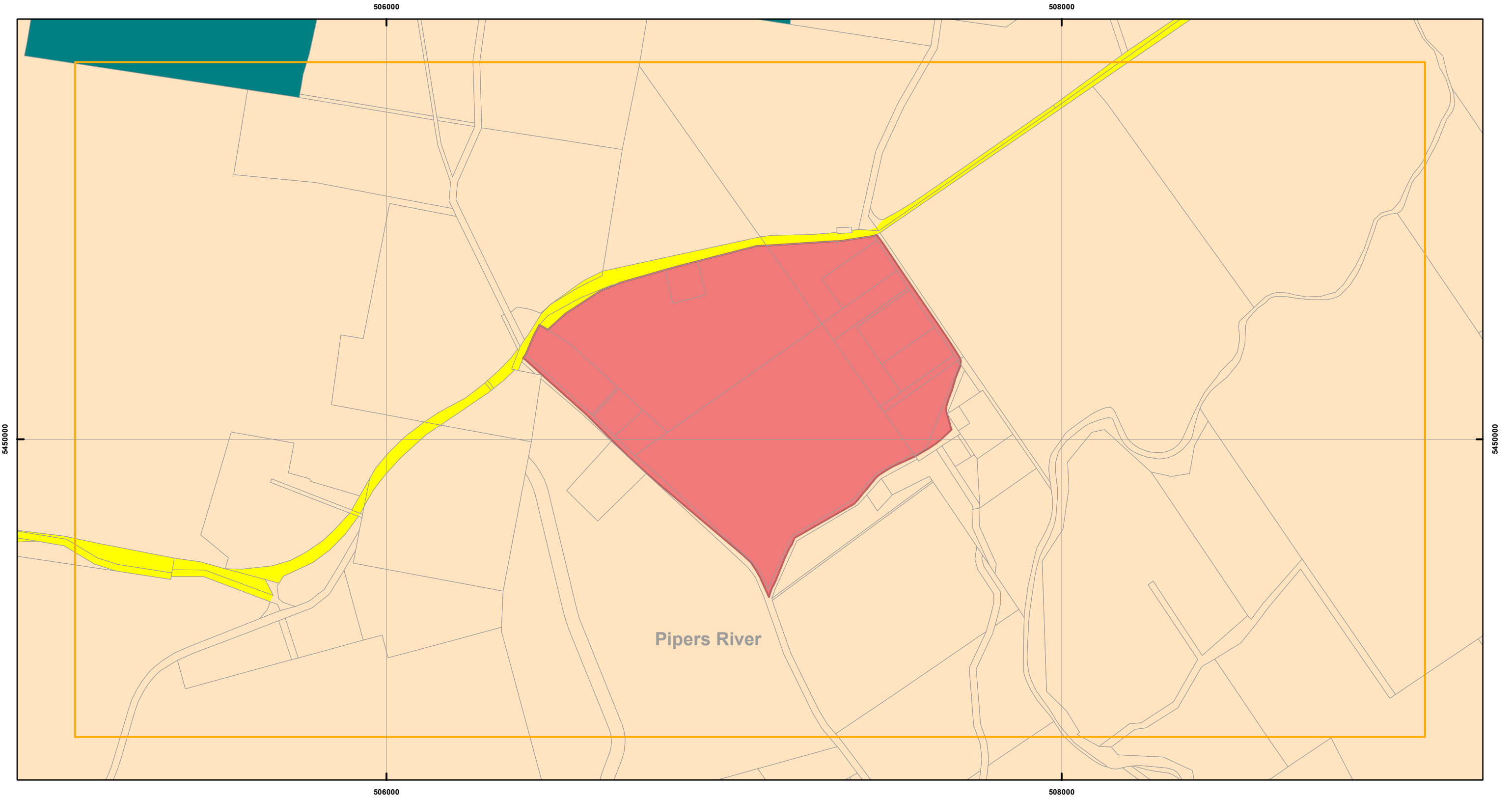
Zoning data from George Town Council
As amended at 19/07/2023
Topographic data from the LIST © State of Tasmania

Print Date: 30/08/2023

LOCATION MAP



GEORGE TOWN INTERIM PLANNING SCHEME - 2013 - ZONING

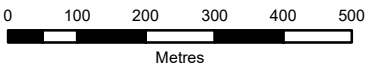


Zones

General Residential	Urban Mixed Use	Local Business	General Industrial	Major Tourism
Inner Residential	Village	General Business	Rural Resource	Port and Marine
Low Density Residential	Community Purpose	Central Business	Significant Agricultural	Particular Purpose
Rural Living	Recreation	Commercial	Utilities	Land parcels
Environmental Living	Open Space	Light Industrial	Environmental Management	



Map 18 of 18



Coordinate System: GDA 94 MGA Zone 55

Date of cadastre: 29/08/2023

Zoning data from George Town Council
As amended at 19/07/2023
Topographic data from the LIST © State of Tasmania

Print Date: 30/08/2023

LOCATION MAP

